

# Internet and Computing Device Access in Santa Clara County

## ArcGIS Online Map Walkthrough

### Background

This document contains a description and walkthrough of the ArcGIS Online Map titled *Internet and Computing Device Access in Santa Clara County*. The online map was developed by the Santa Clara County Office of Education (SCCOE) to support school district distance learning plans and inform the County's efforts to close the digital divide.

### Layers

The SCCOE reserves the right to update the map to ensure that it reflects the most comprehensive, accurate, and up-to-date information. The following are standard layers that were available for visualization as of the initial publication date:

- Internet Connectivity Layers
  - Percent of households without internet by census tract
  - Percent of households without computing devices by census tract
- Demographic Layers
  - Percent of children living at or below the federal poverty level by census tract
- Location Layers
  - School sites
  - University sites
- Area Layers
  - Unincorporated areas
- City Boundaries
  - Campbell
  - Cupertino
  - Gilroy
  - Los Altos
  - Los Gatos
  - Milpitas
  - Morgan Hill
  - Mountain View
  - Palo Alto
  - San Jose
  - San Martin (Census Designated Place)
  - Santa Clara
  - Saratoga
  - Sunnyvale
- Districts
  - Supervisorial districts
  - Congressional districts

# Internet and Computing Device Access in Santa Clara County

## ArcGIS Online Map Walkthrough

- School districts
  - Elementary
    - Alum Rock
    - Berryessa
    - Cambrian
    - Campbell
    - Cupertino
    - Evergreen
    - Franklin-McKinley
    - Lakeside Joint
    - Loma Prieta
    - Los Altos
    - Los Gatos
    - Luther Burbank
    - Moreland
    - Mountain View
    - Oak Grove
    - Orchard
    - Saratoga
    - Sunnyvale
    - Union
  - Unified
    - Gilroy
    - Milpitas
    - Morgan Hill
    - Palo Alto
    - San Jose
    - Santa Clara
  - High School
    - Campbell
    - East Side
    - Fremont
    - Los Gatos-Saratoga
    - Mountain View-Los Altos

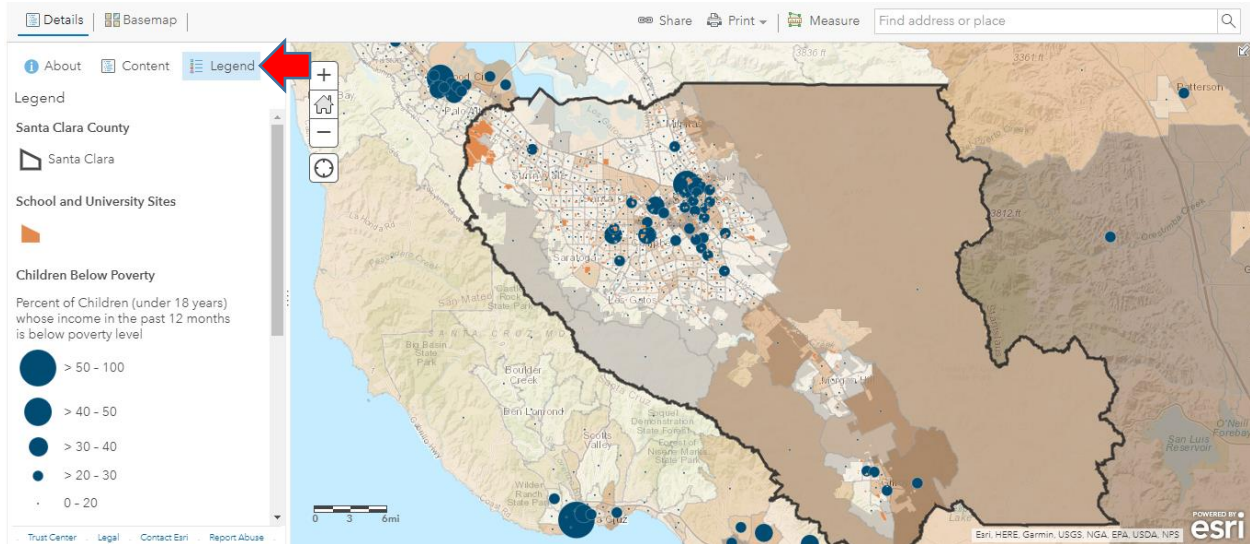
Source information for the layers listed above can be found [here](#). All data are current as of 2019.

# Internet and Computing Device Access in Santa Clara County

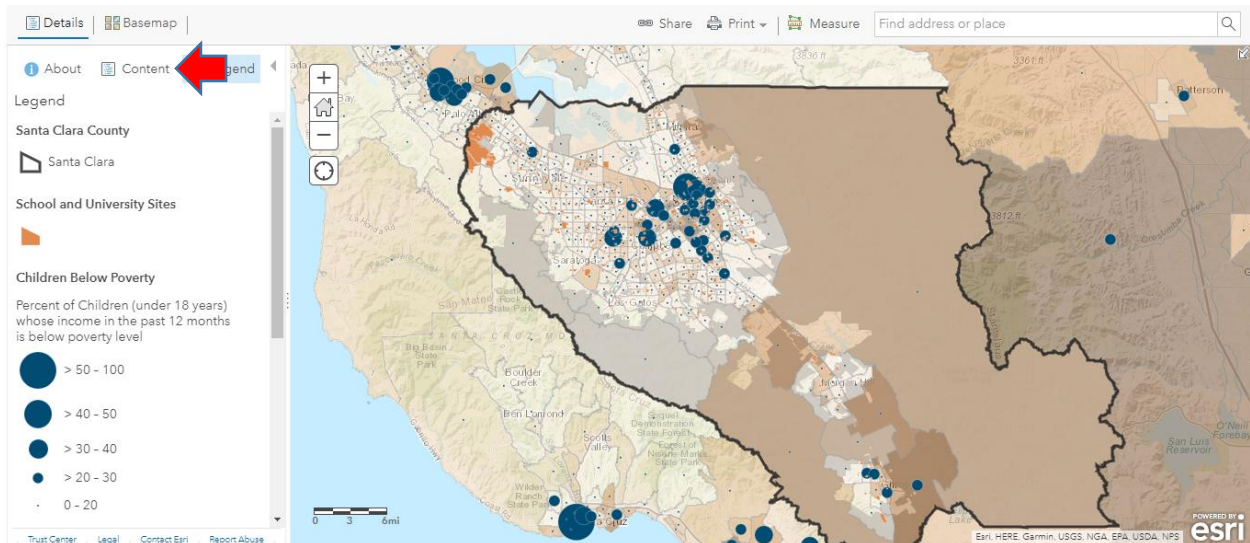
## ArcGIS Online Map Walkthrough

### Default Map

Users that click on the map thumbnail that is embedded on the SCCOE’s *Closing the Digital Divide* webpage will be re-directed to the ArcGIS Online Map for *Internet and Computing Device Access in Santa Clara County*. The map takes a few seconds to load. When fully loaded, the default map that displays should resemble the image displayed below. Note, the default map loads on the “Legend” tab (◀) which contains a listing of all layers currently selected along with a description of notable symbology. For example, in this map, the blue circles represent the percent of children under the age of 18 (by census tract) who are living at or below the federal poverty line. The larger the circle, the greater the percent.



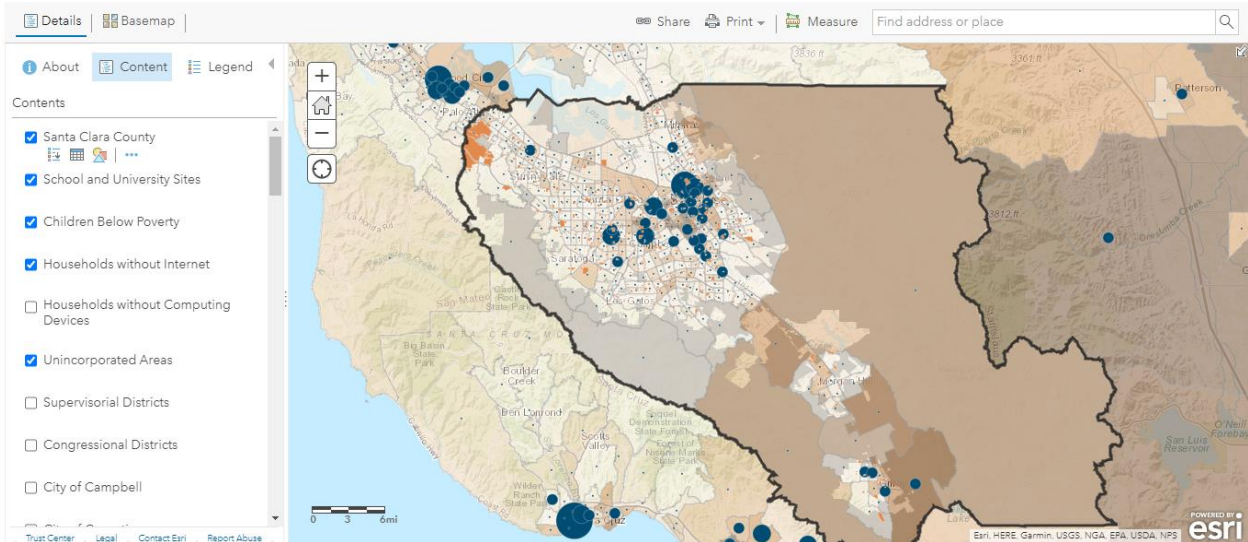
To access the layers described in the previous section, simply click on the “Content” tab (◀) to the left of the “Legend” tab.



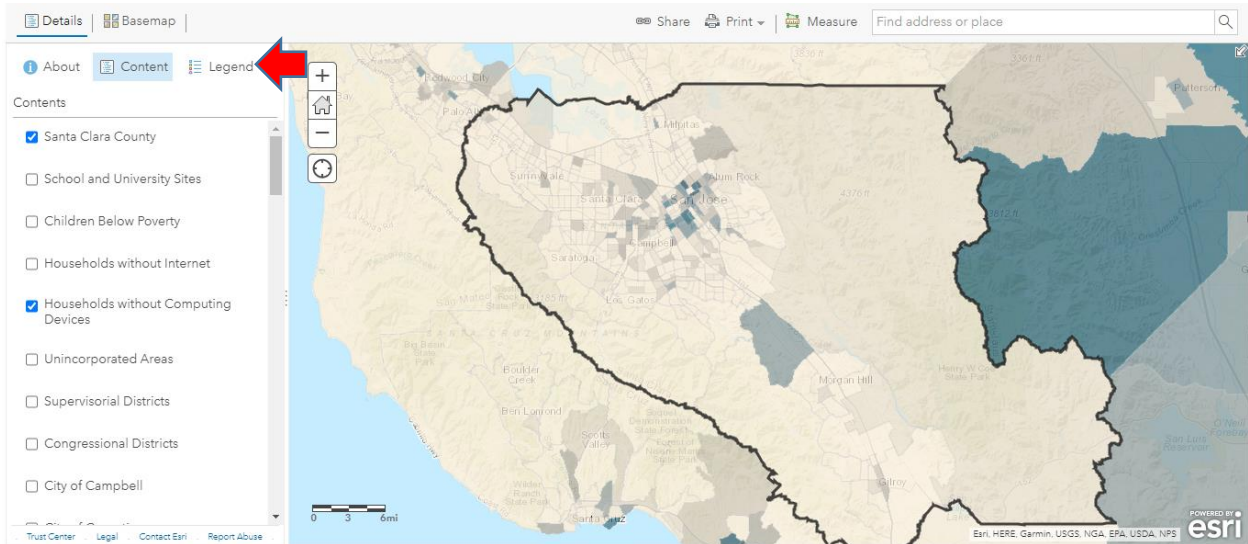
# Internet and Computing Device Access in Santa Clara County

## ArcGIS Online Map Walkthrough

In the “Content” tab, users can identify, select, and deselect additional layers. Layers with the blue checkboxes are currently selected. This includes the layer that displays Santa Clara County boundaries, the layer that displays school and university sites, the thematic layer that displays children living at or below the federal poverty level by census tract, the thematic layer that displays households without internet by census tract, and the layer that displays unincorporated areas in the county.



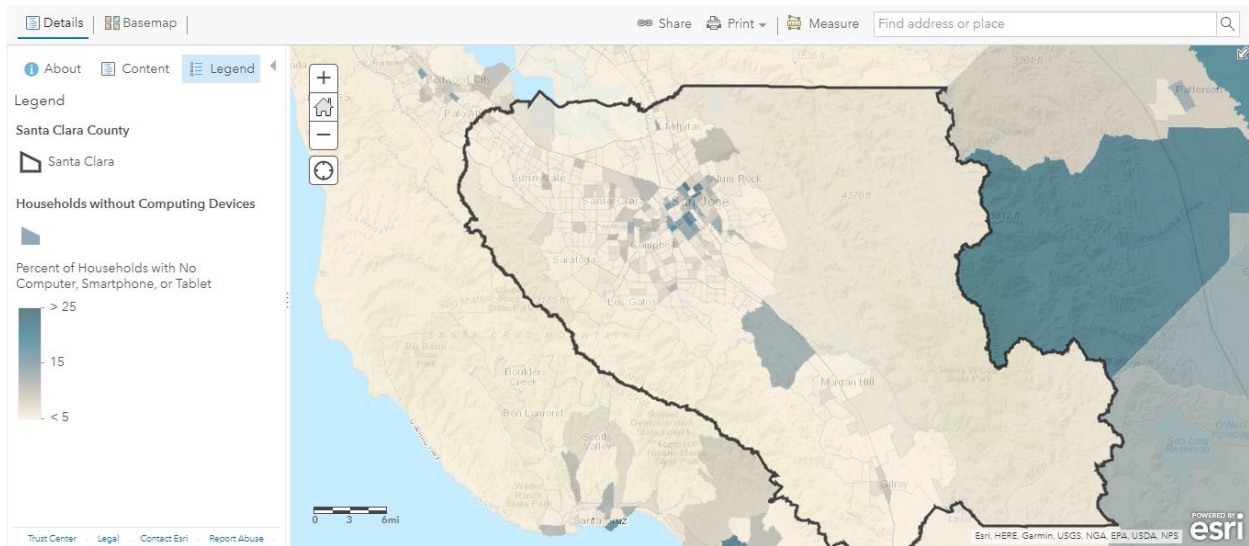
For illustrative purposes (as shown below), I have deselected the layer for “School and University Sites,” “Children Below Poverty,” “Households without Internet,” and “Unincorporated Areas” and have selected “Households without Computing Devices.” The map now displays less information and a shift in color scheme. Now return to the “Legend” tab (◀).



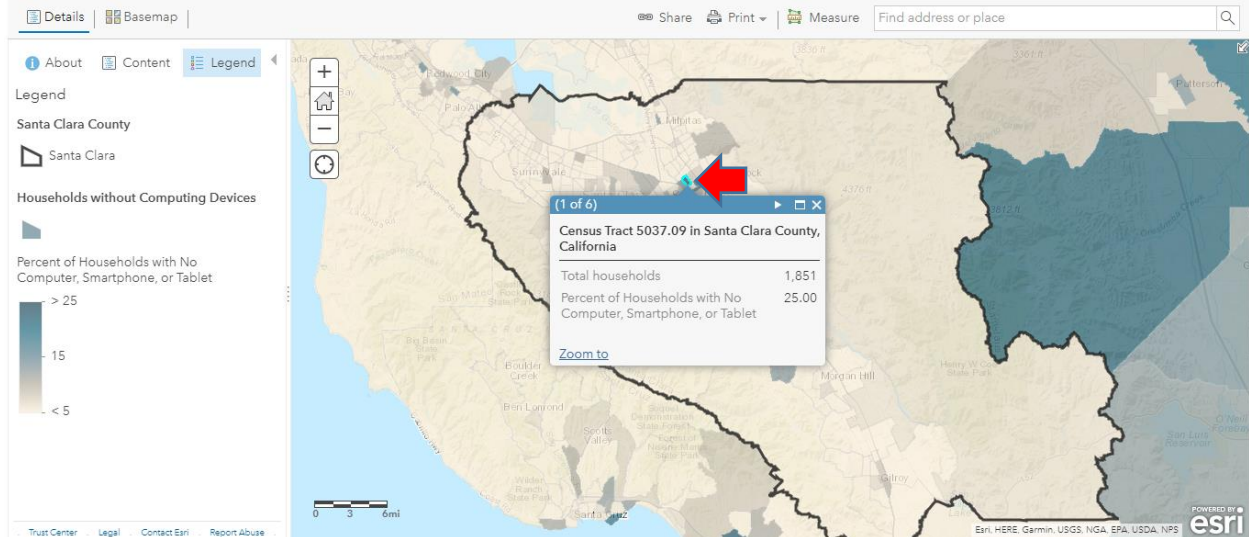
# Internet and Computing Device Access in Santa Clara County

## ArcGIS Online Map Walkthrough

When layers are selected and or deselected, the Legend automatically updates to include information on selected layers only. In this case, the Legend is telling users that the color scheme represents the percent of households without computing devices (by census tract). Dark blue census tracts are areas in the county where a greater percentage of households are without computing devices.



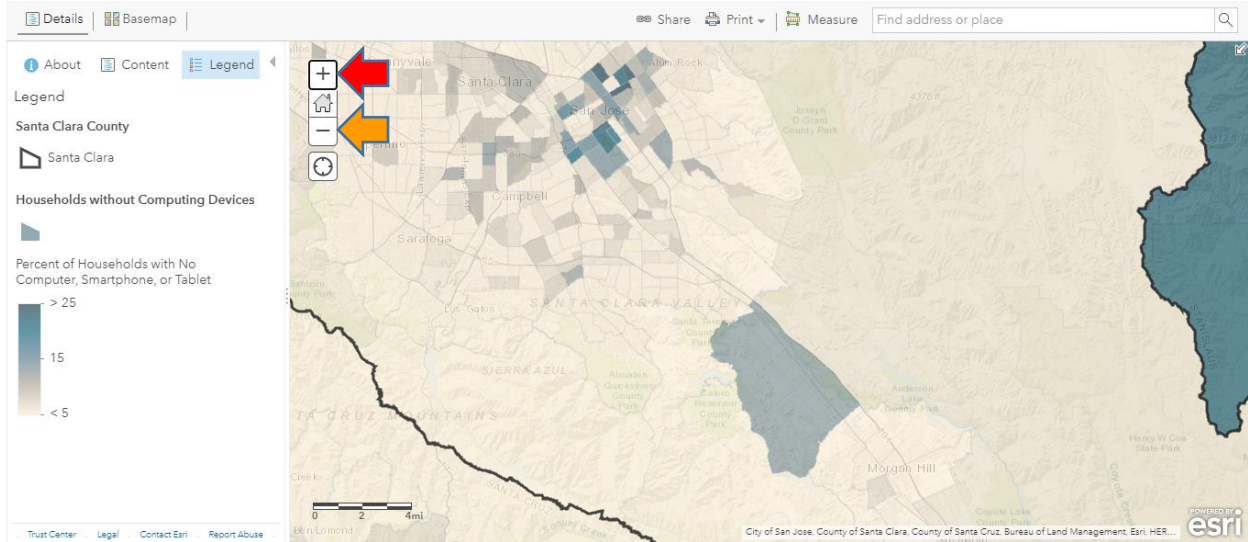
One of the most notable features of the ArcGIS Online is that it allows for data pop-ups (i.e., information tied to a layer that will display when a user selects an area or symbol within the map). Here, I have selected a specific census tract (◀) to reveal that 25% of the 1,851 households within census tract 5037.09 are without computing devices. Note, data pop-ups are available for virtually every layer in this ArcGIS Online Map.



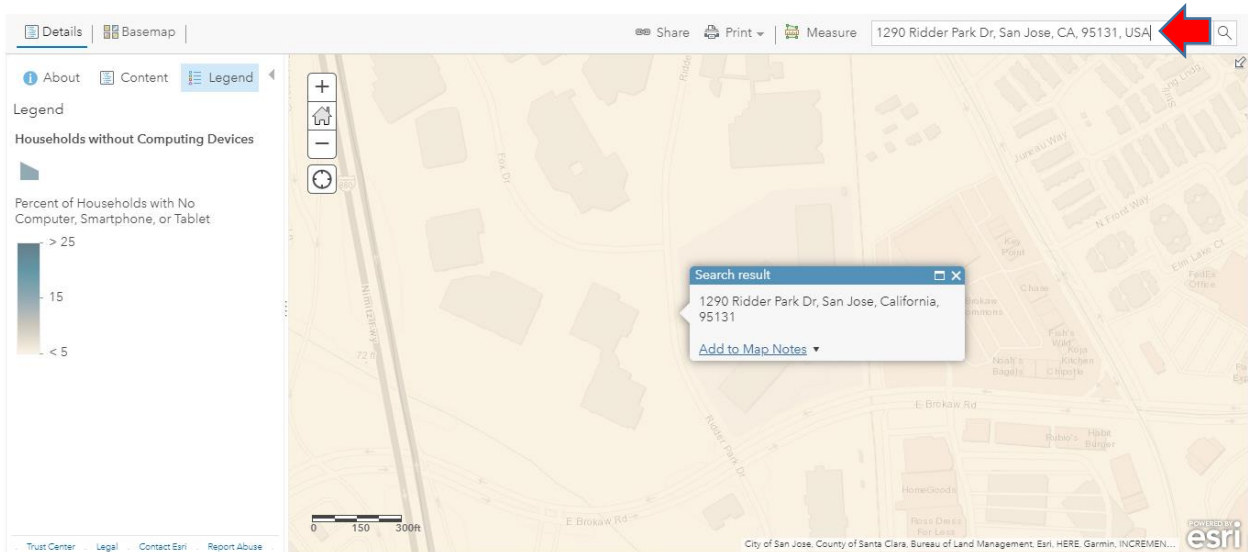
# Internet and Computing Device Access in Santa Clara County

## ArcGIS Online Map Walkthrough

In addition to data pop-ups, the ArcGIS Online Map allows users to zoom in (↶) and out (↷) to view certain geography with greater or less specificity. Users can return to the default extent by clicking on the Home button (🏠).



Another useful feature of the ArcGIS Online Map is that it allows users to find a specific address or place. To do this, simply type an address into the search bar and hit “Enter” on your keyboard or select from among one of several location suggestions. Here I have entered the Main Office address of the SCCOE (↶) and hit “Enter” which pinpoints the location. I can now easily see that it falls in an area within the county where few households are without computing devices.



## Internet and Computing Device Access in Santa Clara County

### ArcGIS Online Map Walkthrough

#### Questions or Comments

That concludes the *Internet and Computing Device Access in Santa Clara County* ArcGIS Online Map Walkthrough. Questions or comments related to this walkthrough or the online map can be directed to [DVillegas@sccoe.org](mailto:DVillegas@sccoe.org).