

## Expansion

Bolstered by student outcomes achieved during its pilot demonstration stage, SEAL is now being replicated in 65 schools in 11 California districts.

In Fall 2015, 39,000 students will be in SEAL classrooms.

### Current SEAL School Districts Fall 2015

Franklin McKinley School District  
*Santa Clara County*

Santa Clara Unified School District  
*Santa Clara County*

Oak Grove School District  
*Santa Clara County*

Redwood City School District  
*San Mateo County*

San Lorenzo School District  
*Alameda County*

San Rafael School District  
*Marin County*

Mountain View School District  
*Los Angeles County*

### SEAL Demonstration Sites Fall 2015

Hoover Elementary,  
Redwood City School District  
*San Mateo County*  
**Original Pilot Site**

Oak Grove School District  
*Santa Clara County*  
**SEAL Demonstration District**

Interested in partnering  
to bring this program  
to your school or district?

Contact: Patty Delaney Thompson,  
*Director of District Partnerships*  
[pthompson@sobrato.org](mailto:pthompson@sobrato.org)

Visit [Sobrato.org](http://Sobrato.org)  
to view "SEAL: An Introduction"  
[10 min video presenting the SEAL Model]

**SOBRATO**  
Philanthropies

# SEAL

Sobrato Early Academic Language Model



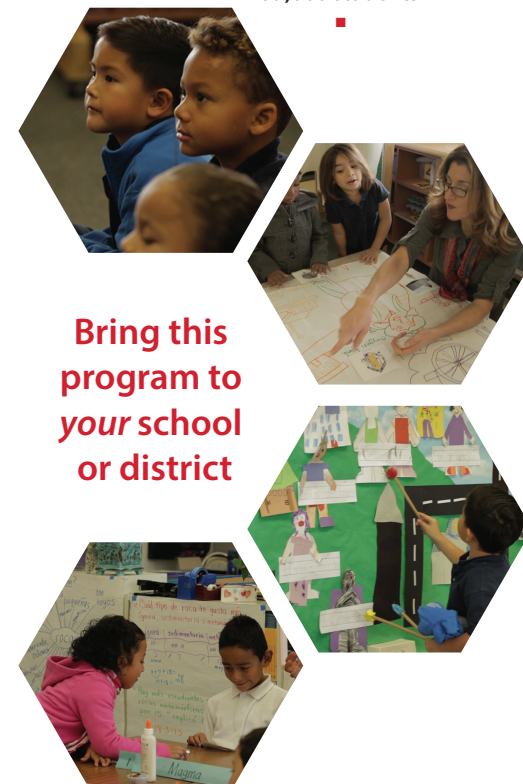
**Award Winning Model**  
California School Board Association  
**2014 Golden Bell Award for  
Implementation of Common Core**  
*First and only winner in new Common Core category*



California Association of  
Bilingual Education (CABE)  
**2014 Seal of Excellence Award**

*Tremendous outcomes for  
English Learner Students*

*Expanding to 65 schools in 11 districts  
in California, impacting more than  
39,000 students*



**Bring this  
program to  
your school  
or district**