



# Asian American and Pacific Islander Educators Network

In Person Meeting

Thursday, February 13, 2025

4:15 - 5:45 p.m.

<https://www.sccoe.org/sclis/aapi>

# Welcome & Introductions



**Alice Williams**

Educator, Central Park Elementary School,  
Santa Clara Unified School District



# HAPPY LUNAR NEW YEAR!

Celebrating the Year of the Snake in  
2025

# Emergency Preparedness



- Identify CPR/First Aid-Certified individuals in the room
- For emergencies, dial **9-1-1** from a landline



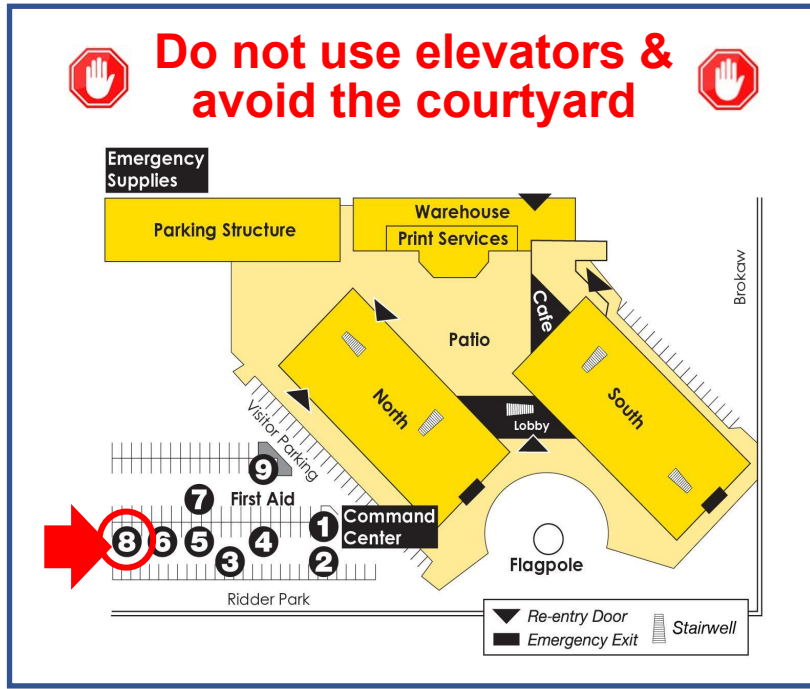
- Notify SCCOE Staff if you require assistance exiting
- A wheelchair is available (1<sup>st</sup> Floor, North Building)



- [See the complete Emergency Plan on the SCCOE Website](#)



# Emergency Evacuation Site



- Presenter to point out **Assembly Area 8**, 2 stairwells/exits
- Follow staff to vacate the building
- Join your group in the parking lot at Assembly Area 8
- Do not go to your car or leave the parking lot until attendance reporting is completed

# Emergency Devices

Emergency devices are located on each floor at the south end of the walkways connecting North and South buildings



Fire  
Extinguishers



Automated External  
Defibrillator (AED)



Narcan Naloxone  
Nasal Spray



## **Visitor Wi-Fi Access**

connect to “**sccoe\_visitor**” – no password is required



## **All-Gender Restroom**

South Building, 2<sup>nd</sup> Floor  
(around the corner from the Oak Grove Room)



## **Privacy Room / Nursing Mothers**

North Building, 1<sup>st</sup> Floor & South Building, 2<sup>nd</sup> Floor  
(across from the East Side/San Jose Room, next to the central stairwell)

# Leadership, Service, & Advocacy

## Interim County Superintendent of Schools



Dr. Charles Hinman

## County Board of Education



Maimona Afzal Berta  
*Area 6*



Victoria Chon  
*Area 5*



Raeena Lari  
*Area 7*



Jorge Pacheco Jr  
*Area 4*



Don Rocha  
*Area 3*



Jessica Speiser  
*Area 1*



Tara Sreekrishnan  
*Area 2*

# Agenda

## **I. Welcome & Introductions**

## **II. Facilitated Discussion: *Empowering Tomorrow's Workforce: The Role of Career and Technical Education***

## **III. Discussion and Reflection**

## **IV. Networking & Dinner**

# Land Acknowledgment

The AAPI Educators' Network is committed to showing respect and honoring the Indigenous Peoples of the land.

We honor and acknowledge that we are on their traditional territories and ancestral homelands. This area was also the site of trade, hunting, gathering, and healing for many other Native Nations: The Tamien [Tae mi yen], The Muwekma [Mew-Eck-Muh], Ohlone [Oh-Lone-ee], and many others.

# Land Acknowledgment cont'd

We recognize the Indigenous peoples as the original stewards of the land, water, plants, and animals who called this place home.

As these words of acknowledgment are spoken and heard, the ties that these nations have to their traditional homelands are renewed and reaffirmed.

We respect the many diverse Indigenous peoples still connected to this land on which we gather. We pay our respect to them and give thanks to all Tribal Nations and the ancestors of this place.

# Statement of Solidarity

**The Santa Clara County Office of Education (SCCOE) in collaboration with the Asian American and Pacific Islander Educators Network affirms its commitment to...**

- creating inclusive, affirming, and equitable school environments for each and every Asian American and Pacific Islander student, family, and staff of our Santa Clara County schools. This statement thus provides rationale and a foundation for operationalizing equity and social justice at the systems level for the Asian American and Pacific Islander students, families, and staff who make up our school communities.
- recognizing that the broad categories of “Asian American” and “Pacific Islander”, [when disaggregated](#), encompass a diversity of cultures, languages, religions, histories, geographical ties, immigration status, socio-economic backgrounds, and generations among over 50 ethnic groups, comprising almost [90,000 K-12 students](#) (35.3%) across Santa Clara County.



# Introductions

**HELLO**  
my name is

- Name
- Role
- District
- One Word

**Use *one* word  
to describe  
how you feel  
right now.**



# Facilitated Presentation

Empowering Tomorrow's Workforce: The  
Role of Career and Technical Education

# Moderator



**Jessica Simpson, Ed.S.**

Director, School Climate, Leadership &  
Instructional Services, Santa Clara  
County Office of Education

# Topic Professional



## **Christine Salloom**

CTE Pathway Coordinator

Silicon Valley Career Technical Education

### **Bio:**

Christine Salloom is a CTE Pathway Coordinator for the Bay Area Community College Consortium where she works to bridge career pathways between K12 and the community colleges. She has been in education for 25 years as a high school science teacher and science subject area expert as well as district office administrator for educational technology. As a product of ROP and community colleges, Christine knows first hand how early career training and community college can be springboards to a successful career.

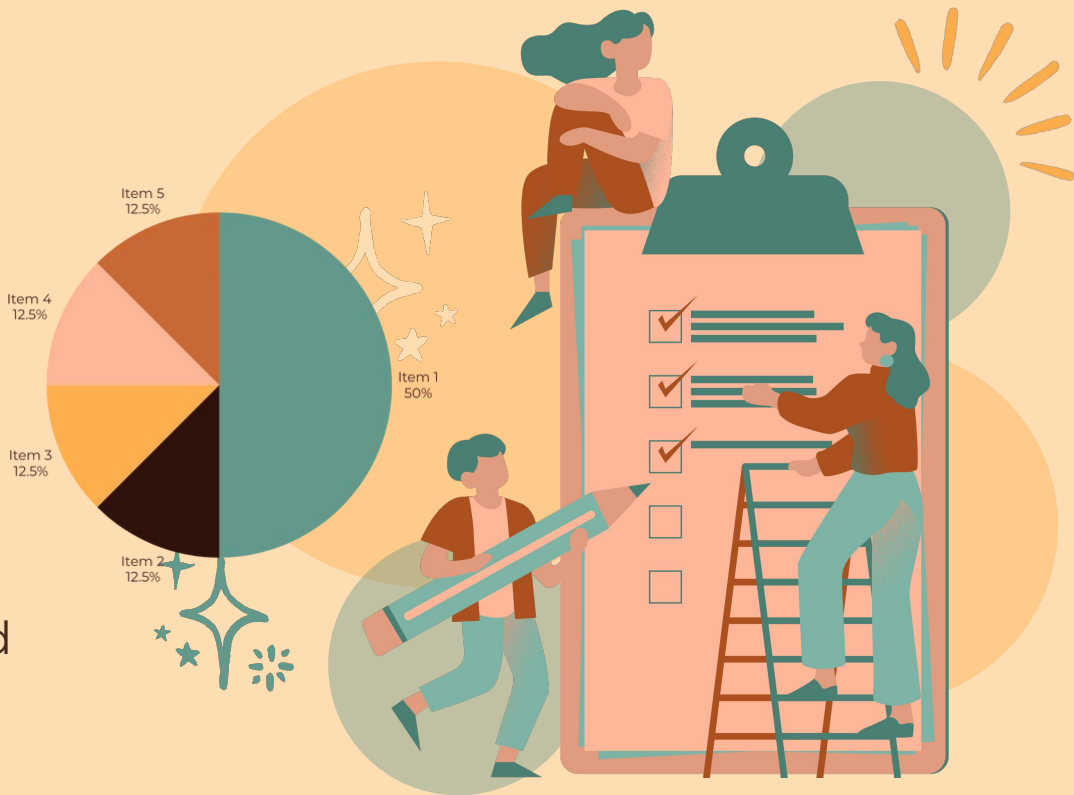
# EMPOWERING TOMORROW'S WORKFORCE: THE ROLE OF CAREER AND TECHNICAL EDUCATION

Presentation by Christine Salloom

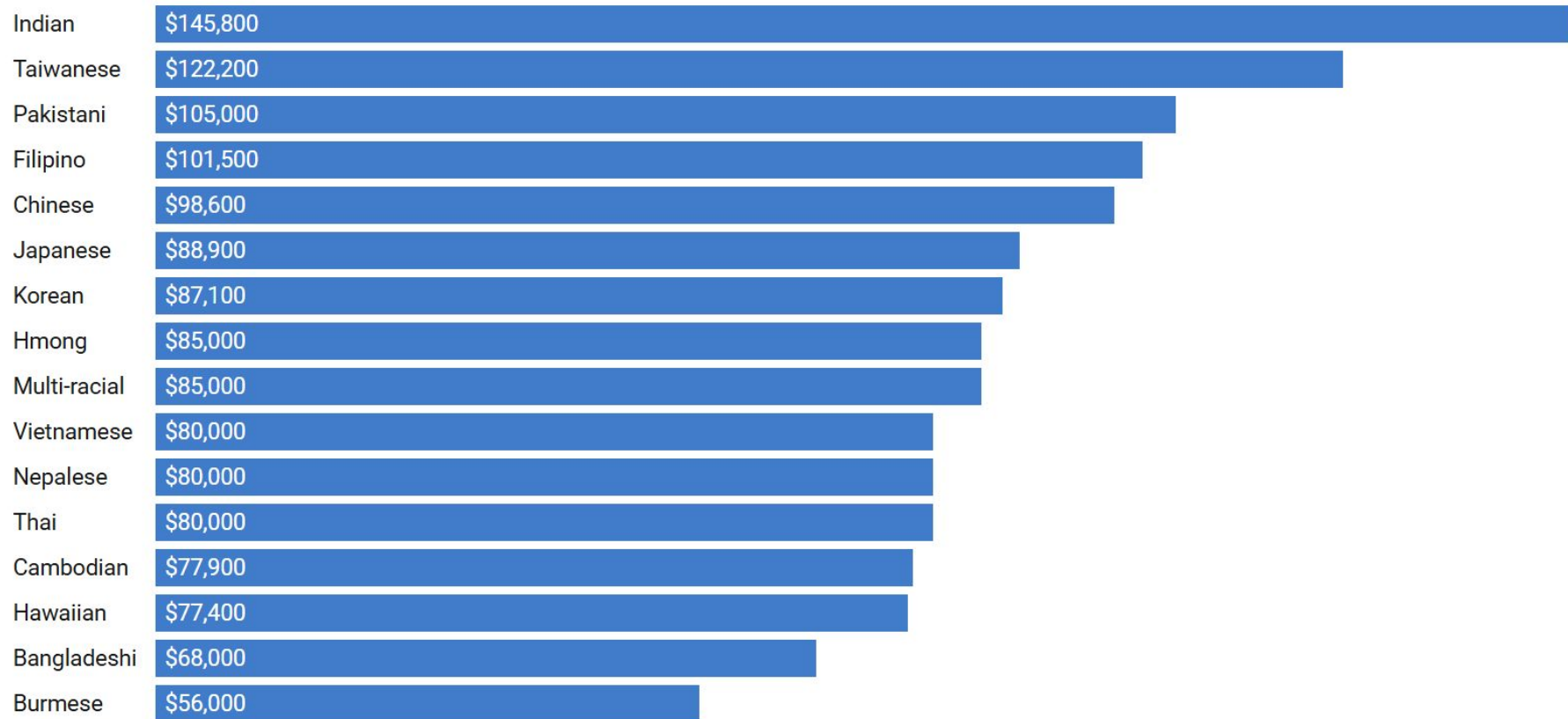


# GAP IN COLLEGE GOING RATE

- Pacific Islanders are under-represented in post-secondary by 20%
- Asians are under-represented in community colleges by 10% but over-represented in other postsecondary pathways



## Median Household Income by Racial Group (2021)



Source: [AIC analysis of 2021 American Community Survey Microdata](#) • Created with [Datawrapper](#)

**If current trends in the demand for skilled workers and the educational attainment of the state's population continue, California will face a large skills gap by 2030.**

**-California Public Policy Institute**

The Pandemic had  
inequitable effects - Those  
with less education were hit  
the hardest

One-third of new jobs in California will  
require some training beyond high  
school but less than a four-year degree  
by 2030

CTE can provide pathways to  
higher education





# WHAT IS CAREER AND TECHNICAL EDUCATION (CTE)

A program of study that involves a **multiyear sequence** of courses that **integrates** core academic knowledge with technical and occupational knowledge to provide students with a **pathway to postsecondary education and careers.**



"We seek the day when every enterprise in California—public and private—has access to a pool of talent that both attracts the world's leading businesses and hastens the development and success of new ones, creating opportunities for all."

## INDUSTRY SECTORS

### Engineering and Architecture

- Architectural Design
- Engineering Technology
- Engineering Design
- Environmental Engineering

### Information and Communication Technologies

- Information Support and Services
- Networking
- Software and Systems Development
- Games and Simulation

### Agriculture and Natural Resources

- Agricultural Business
- Agricultural Mechanics
- Agriscience
- Animal Science
- Forestry and Natural Resources
- Ornamental Horticulture
- Plant and Soil Science

### Business and Finance

- Business Management
- Financial Services
- International Business

### Public Services

- Public Safety
- Emergency Response
- Legal Practices

### Manufacturing and Product Development

- Graphic Production Technologies
- Machining and Forming Technologies
- Welding and Materials Joining
- Product Innovation and Design

### Transportation

- Operations
- Structural Repair and Refinishing
- Systems Diagnostics, Service, and Repair

### Building and Construction Trades

- Cabinetry, Millwork, and Woodworking
- Engineering and Heavy Construction
- Mechanical Systems Installation and Repair
- Residential and Commercial Construction

### Fashion and Interior Design

- Fashion Design and Merchandising
- Interior Design
- Personal Services

### Education, Child Development, and Family Services

- Child Development
- Consumer Services
- Education
- Family and Human Services

### Hospitality, Tourism, and Recreation

- Food Science, Dietetics, and Nutrition
- Food Service and Hospitality
- Hospitality, Tourism, and Recreation

### Marketing, Sales, and Services

- Marketing
- Professional Sales
- Entrepreneurship/Self-Employment

### Arts, Media, and Entertainment

- Design, Visual, and Media Arts
- Performing Arts
- Production and Managerial Arts
- Game Design and Integration

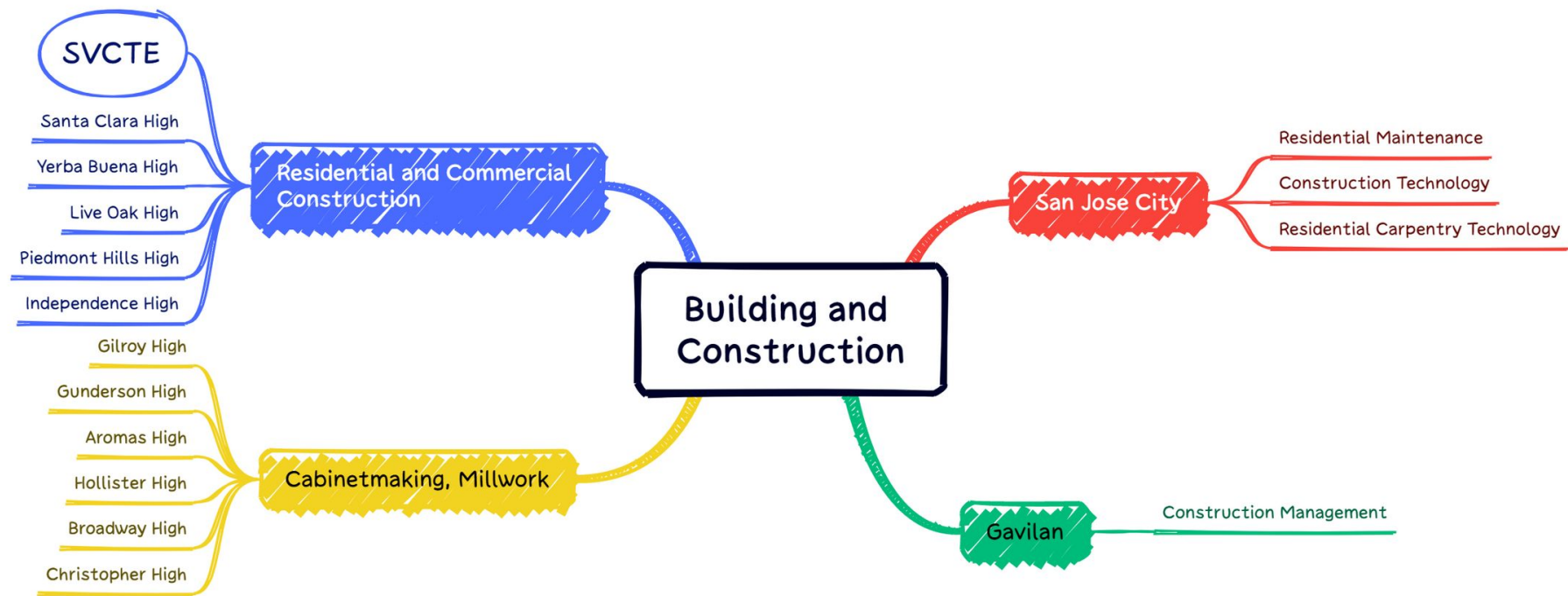
### Energy, Environment, and Utilities

- Environmental Resources
- Energy and Power Technology
- Telecommunications

### Health Science and Medical Technology

- Biotechnology
- Patient Care
- Health Care Administrative Services
- Health Care Operational Support Services
- Public and Community Health
- Mental and Behavioral Health





Presented with xmind

# What are students enrolling in?

Enrollments  
24 or Younger  
CTE Programs  
Enrolling 2000 or more



Table  
Santa Clara County  
Office of Data and Information  
Data source: Data Vista 122SW  
[datavista.cccco.edu](http://datavista.cccco.edu)

| Sector              | TOP    | Program Name                                   | Enrollments 2022-23<br>24 and Younger | Percentage 24 and<br>Younger of Total<br>2022-23 Enrollments |
|---------------------|--------|--|---------------------------------------|--|
| Business            | 050200 | Accounting                                     | 11,664                                | 63%  |
| Business            | 050100 | Business and Commerce, General                 | 9,329                                 | 66%  |
| Business            | 050500 | Business Administration                        | 5,855                                 | 75%  |
| Business            | 050600 | Business Management                            | 2,104                                 | 51%  |
| Business            | 050900 | Marketing and Distribution                     | 1,728                                 | 62%  |
| Business            | 051100 | Real Estate                                    | 1,501                                 | 39%  |
| Ed, Human Dev       | 130500 | Child Development/Early Care and Education     | 7,217                                 | 47%  |
| Energy, Const, Util | 020100 | Architecture and Architectural Technology      | 1,139                                 | 63%  |
| Health              | 130600 | Nutrition, Foods, and Culinary Arts            | 6,294                                 | 67%  |
| Health              | 125000 | Emergency Medical Services                     | 1,697                                 | 60%  |
| Health              | 120800 | Medical Assisting                              | 1,651                                 | 57%  |
| Health              | 120100 | Health Occupations, General                    | 1,182                                 | 47%  |
| Health              | 123010 | Registered Nursing                             | 1,057                                 | 32%  |
| Info Comm Tech      | 070710 | Computer Programming                           | 8,800                                 | 69%  |
| Info Comm Tech      | 070100 | Information Technology, General                | 4,177                                 | 57%  |
| Info Comm Tech      | 051400 | Office Technology/Office Computer Applications | 2,211                                 | 39%  |
| Info Comm Tech      | 061400 | Digital Media                                  | 1,889                                 | 70%  |
| Info Comm Tech      | 103000 | Graphic Art and Design                         | 1,811                                 | 58%  |
| Info Comm Tech      | 070200 | Computer Information Systems                   | 1,799                                 | 51%  |
| Info Comm Tech      | 070700 | Computer Software Development                  | 1,622                                 | 58%  |
| Info Comm Tech      | 101200 | Applied Photography                            | 1,301                                 | 52%  |
| Info Comm Tech      | 061410 | Multimedia                                     | 1,200                                 | 68%  |
| Info Comm Tech      | 100500 | Commercial Music                               | 1,101                                 | 67%  |
| Public Safety       | 210500 | Administration of Justice                      | 5,409                                 | 39%  |
| Public Safety       | 213300 | Fire Technology                                | 1,701                                 | 37%  |
| Transportation      | 094800 | Automotive Technology                          | 2,021                                 | 70%  |



# POSITIVE IMPACT ON STUDENT SUCCESS

Higher earnings

---

More options

---

Higher satisfaction

---

Lower debt

---

Lifelong learners

---

Soft Skills needed in the workforce

---

Increase school connectedness,  
reduce behavioral problems, and  
reduce dropout rates

---



**800SW - Median Earnings****802SW - Livable Wages****Age Group 20-24 Exited 2021-22**

|                          | Number Exiters Earning<br>Below Livable Wage* | Number Students<br>Earning Livable Wage* | % of Exiters Earning<br>Livable Wage |
|--------------------------|---|--|--------------------------------------|
| De Anza College          | 488   | 263                                      | 35%                                  |
| Evergreen Valley College | 160   | 69                                       | 30%                                  |
| Foothill College         | 310   | 613                                      | 66%                                  |
| Gavilan College          | 87  | 138                                      | 61%                                  |
| Mission College          | 153   | 103                                      | 40%                                  |
| San Jose City College    | 202   | 76                                       | 27%                                  |
| West Valley College      | 190   | 72                                       | 27%                                  |
|                          | 5,371   | 4,020                                    | 43%                                  |

Data source: [datavista.cccco.edu](https://datavista.cccco.edu) 800SW and 802SW

\* Exiting students earning livable wage or better. Livable wage determined by Insight Center for Community Economic Development by County. Data Source: DataVista

\*\*Median wage for those students aged 20-24 who exited in 2021-22 and did not transfer

\*\*\* Amy K. Glasmeier, "Living Wage Calculator," Massachusetts Institute of Technology, 2025. Accessed on 1/4/25 <https://livingwage.mit.edu/06/locations>

Table

Source: DataVista 800SW, 802SW [datavista.cccco.edu](https://datavista.cccco.edu)



# ESL CTE OPPORTUNITIES

## MISSION COLLEGE

- English for Careers in Food Service
- English for Child Care
- English for Child Development

## SVAE

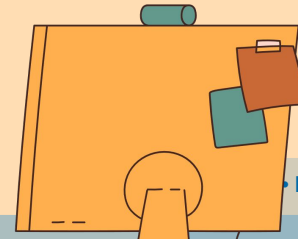
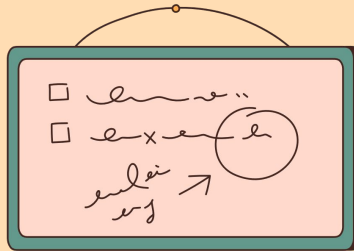
- Medical Terminology  
with ESL Support

## SANTA CLARA ADULT SCHOOL

- English for Health Care
- English for Food Service

## GAVILAN ADULT ED

- EMT for ELL





# INCREASE COLLEGE GOING THROUGH EARLY COLLEGE CREDIT

- Students who succeed in dual-enrollment courses and subsequently enroll in college experience higher levels of motivation and better first-semester grades than students who do not succeed in such courses.
- Students with even one class of Dual Enrollment are 20% more likely to attend college and 7% more likely to earn a degree within 4 years (14% more in 8 years)

◦ Lee and Villar



# IMPORTANCE OF GUIDANCE

- Early career exploration is important as many students don't have family/community exposure
- The outcomes from all programs and career paths are not created equal
- Students' goals must be investigated and students must be coached to monitor and adjust those goals as needed
- Industry placements are vital to success so students get early access to the full nature of the job
- The family is important. For many careers, family orientation is as important as student orientation
- Students with enrollment need support



# Questions?





**Discussion**

**Reflection**

# Discussion and Reflection

- What information that was shared during the facilitated presentation resonated with you?
- How can this apply to your work in education?
- Based upon what you heard tonight, what can you do as educators or community members to respond to the needs of students?

# Networking and Dinner

*Enjoy!*



# *Please Provide Feedback*

[https://sccoe.to/aapien\\_survey021325](https://sccoe.to/aapien_survey021325)



감사합니다 Natick  
Danke Ευχαριστίες Dalu  
Köszönöm  
Thank You Tack  
Спасибо Dank Gracías  
谢谢 Merci Seé  
Obrigado

# 2024-25 Network Meetings

4:15 to 5:45 p.m.



Wednesday, April 2, 2025

Special Event: May 17, 2025

[Invite your colleagues to register!](#)

(This year, you will need to register separately for each meeting.)







**Jessica Simpson, Ed.S.**

Director, School Climate, Leadership  
& Instructional Services  
Professional Learning & Support Division

[jsimpson@sccoe.org](mailto:jsimpson@sccoe.org)

(669) 212-4444

# Santa Clara County Office of Education

Working collaboratively with school and community partners, the **Santa Clara County Office of Education (SCCOE)** is a regional service agency committed to serving, inspiring, and promoting student and public school success. The SCCOE is a premier service organization driven by the core principles of equity, diversity, inclusion, and partnership.

For more information about the Santa Clara County Office of Education, please visit [www.sccoe.org](http://www.sccoe.org)



@SCCOE



@santaclarasccoe



@santa-clara-county-  
office-of-education