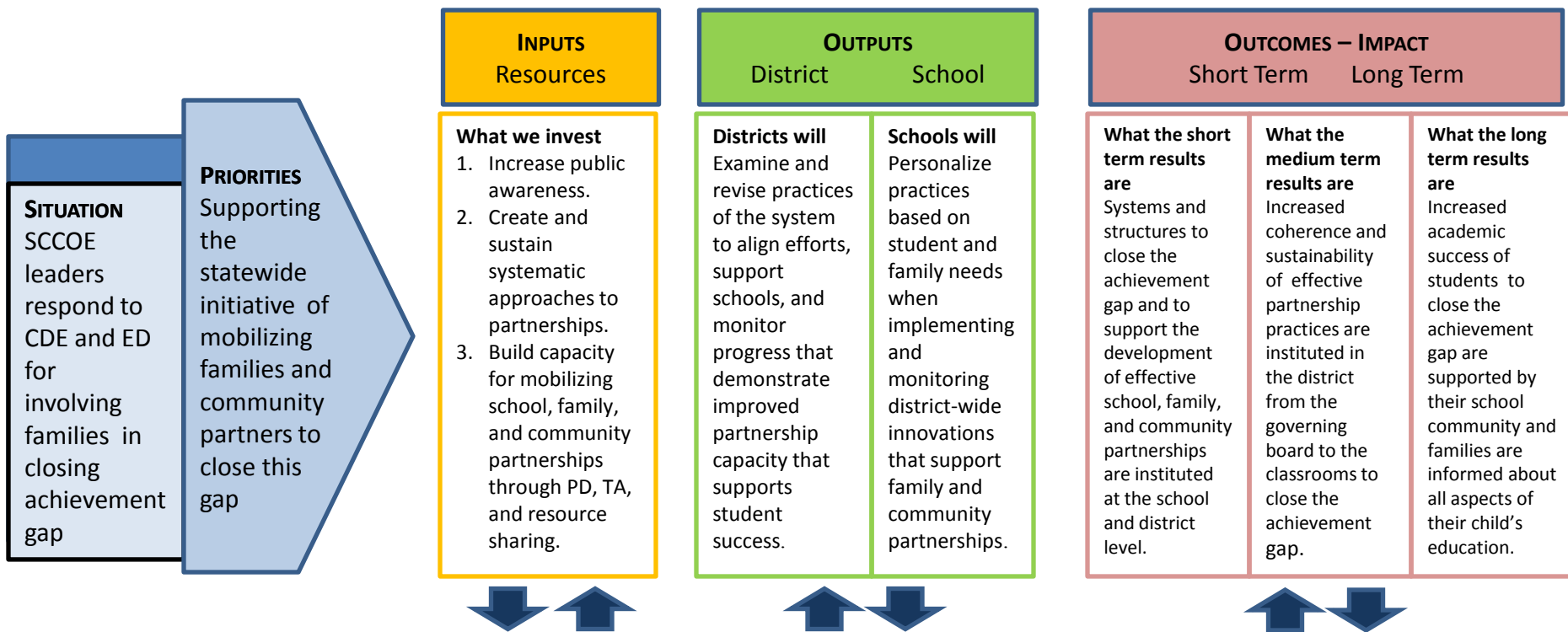


SCCOE PARENT ENGAGEMENT LOGIC MODEL



ASSUMPTIONS

- From the time a child is born, parents are a child's first teachers and provide the primary educational environment.
- A family's formal and informal cultural and academic enrichment activities at home should be integrated into a school's parent engagement program.
- Parent involvement continues to have positive effects through high school and is more important to student success than a family's income or education.
- Parents are capable of understanding grade level academic content standards and applying them into home-based academic enrichment activities.
- Students with involved parents are more likely to do better at school, stay in school longer, and like school better.
- School-based parent engagement framework models focus on a school's readiness to engage parents in their school's curriculum and daily programs.
- Parent involvement is a two-way empowering, culturally relevant, and respectful partnership with educators making our children's success a priority in school and beyond.
- Effective parent engagement can contribute to a family's own economic development and the economic development within a community through job training skills and career development support services.
- Parent involvement closes the gap between educational institutions and parents to support and promote student academic achievement.

Evaluation

Focus – Collect Data – Analyze and Interpret - Report