



Santa Clara County
Office of Education

2020 Professional Learning Catalog



INTRODUCTION FROM THE COUNTY SUPERINTENDENT OF SCHOOLS



Dear Educators,

The Santa Clara County Office of Education (SCCOE) is committed to serving, inspiring, and promoting the success of Santa Clara County's students and public schools.

Day-in and day-out, staff conduct the mission-minded work that makes the SCCOE a premier service organization dedicated to improving access to inclusive, equitable, high-quality education and providing quality support to districts, schools, students, and communities. One of the ways SCCOE staff accomplish these goals is through the development and delivery of professional learning designed to help educators provide the instruction and support students need to succeed both in and outside of the classroom.

To aid in that effort, I am proud to present the SCCOE's 2020 Professional Learning Catalog. This catalog provides a listing of over 200 professional learning offerings that are available in the 2020/21 academic year. As shown in **Contents**, these offerings are organized in two sections beginning with a listing of upcoming conferences, programs, communities of practice, and network opportunities (see **Section I**) and ending with a listing of individual workshops (see **Section II**).

To assist educators in easily identifying the offerings that meet their needs, whether personal or for Local Control Accountability Plan (LCAP) planning purposes, within each section offerings are organized by six strands (Academics, Behavior, Leadership, Family & Community Engagement, Social-Emotional, and Systems) adapted from the Multi-Tiered Systems of Support (MTSS) framework. Further, each offering includes a description and information on intended audiences, grade levels, and alignment with state priorities (see **How to Use This Catalog** on page 4 for more information on the catalog's organization and how to best use it).

On behalf of students and their families, thank you for your continued hard work and dedication to improving outcomes for all students.

Sincerely,

A handwritten signature in black ink that reads "Mary Ann Dewan".

Dr. Mary Ann Dewan

County Superintendent of Schools

CONTENTS

Introduction from the County Superintendent of Schools	2
How to use this Catalog	4
Santa Clara County Office of Education Professional Learning Divisions & Departments	5
Professional Learning Catalog Strands & State Priorities	6

SECTION I

Conferences	8
Programs	10
Communities of Practice	12
Network Opportunities for Educators	14

SECTION II – WORKSHOPS

Academics	17
Leadership	31
Behavior	34
Social-Emotional	35
Systems: School Climate and Infrastructure	37
Family & Community Engagement	41
LPC & SELPA	42


HOW TO USE THIS CATALOG

This **Professional Learning Catalog** is designed to guide district, school, and other educational leaders to high-quality, current professional learning opportunities offered by the Santa Clara County Office of Education (SCCOE).

The catalog is divided into two sections. The first section highlights conferences, programs, communities of practice, and network opportunities for educators. The second section lists workshops that can be offered throughout the year. This list of workshops is not exclusive and highlights the type of content the SCCOE offers. If your district or school needs specific training that is not listed, please contact the department director below to discuss your needs.

Both sections are divided into strands adapted from the Multi-Tiered Systems of Support, a basis for understanding how educators can work together to ensure equitable access and opportunity for all students to achieve success.

Another key feature of this catalog is the alignment to the state priorities. Each catalog item supports one or more of the eight state priorities for improving student outcomes that must be addressed by school districts in their Local Control and Accountability Plans (LCAPs).

For more information on currently offered events, programs, and workshops, including a PDF version of this catalog, see the Professional Learning Portal webpage at sccoe.org/plportal. 

DEPARTMENT	CONTACT	EMAIL
Educator Preparation Programs	Adora Fisher	afisher@sccoe.org
Innovation & Instructional Support	Jennifer Janzen	jjanzen@sccoe.org
Multilingual & Humanities Education	Yee Wan, Ed.D.	ywan@sccoe.org
Safe & Healthy Schools	Jennifer Del Bono	jdelbono@sccoe.org
Educational Technology Services	Craig Blackburn, Ed.D.	cblackburn@sccoe.org
California Preschool Instructional Network	Linda Cochran	lcochran@sccoe.org
Differentiated Assistance and District Support	Liz Wolfe	lwolfe@sccoe.org
Inclusion Collaborative	Kathy Wahl	kwahl@sccoe.org
District LCAP Advisory Services	Chris Izor	cizor@sccoe.org
Local Early Education Planning Council	Michael Garcia	mgarcia@sccoe.org
Special Education Local Plan Area	Leo Mapagu	lmapagu@sccoe.org
Data Governance	Marcy Lauck	mllauck@sccoe.org

SANTA CLARA COUNTY OFFICE OF EDUCATION

PROFESSIONAL LEARNING DIVISIONS & DEPARTMENTS

PROFESSIONAL LEARNING & INSTRUCTIONAL SUPPORT

Educator Preparation Programs

- Education Preparation for Inclusive Classrooms
- Leaders in Educational Administration Program
- Cognitive Coaching

Innovation & Instructional Support

- Arts
- Career Technical Education
- Mathematics
- Science

Multilingual & Humanities Education

- Dual & World Languages
- Educator Engagement
- English Learners
- English Language Arts & Literacy/
English Language Development/Literacy
- History-Social Science
- Parent Engagement

Safe & Healthy Schools

- Foster Youth and Homeless Educational Services
- Positive Behavioral Interventions Support
- Tobacco Use Prevention Education

Educational Technology & Leadership

- Educational Technology

EQUITY & EDUCATIONAL PROGRESS

Differentiated Assistance and District Support

- Multi-Tiered System of Supports

Inclusion Collaborative

District LCAP Advisory Services

- Assessment & Accountability
- State & Federal Programs
- LCAP

EXECUTIVE SERVICES

Local Early Education Planning Council (LPC)

Special Education Local Plan Area (SELPA)

Data Governance

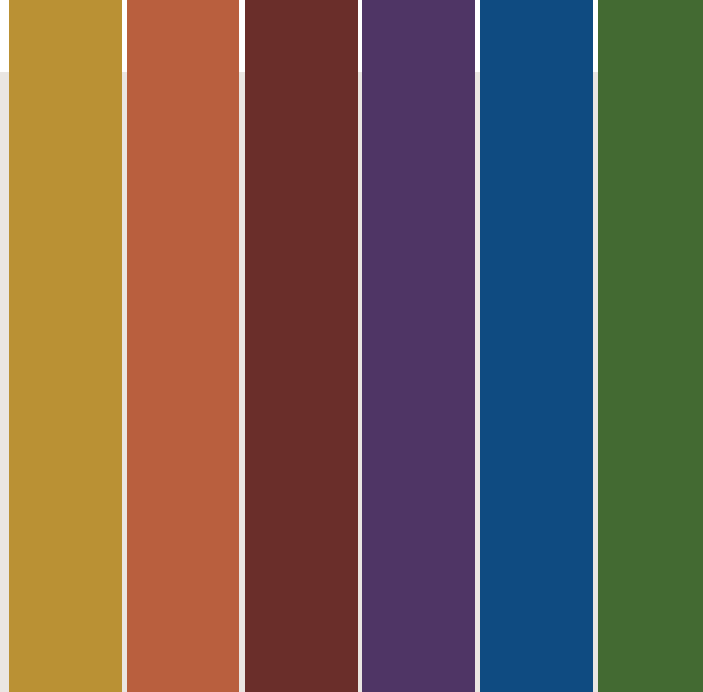
PROFESSIONAL LEARNING CATALOG STRANDS & STATE PRIORITIES

PROFESSIONAL LEARNING CATALOG STRANDS (ADAPTED FROM MTSS FRAMEWORK)

ACADEMICS	BEHAVIOR
<ul style="list-style-type: none"> Identify a comprehensive assessment system Create and utilize teams Provide universal academic supports Provide targeted interventions and supports Provide individualized interventions and supports Develop guidelines to implement curriculum 	<ul style="list-style-type: none"> Identify a comprehensive assessment system Create and utilize teams Provide universal behavior supports Provide targeted interventions and supports Provide individualized interventions and support
LEADERSHIP	FAMILY & COMMUNITY ENGAGEMENT
<ul style="list-style-type: none"> Lead the development of a vision Create a leadership team Create opportunities to contribute Provide access to instructional coaching Seek input from students, families, teachers, staff, and communities Make learning opportunities available to all Use data Conduct strengths-based evaluations 	<ul style="list-style-type: none"> Engage with students and families Engage with the community Obtain input and feedback
	SOCIAL-EMOTIONAL
	<ul style="list-style-type: none"> Identify a comprehensive assessment system Create and utilize teams Provide universal social-emotional supports Provide supplemental interventions and supports Provide comprehensive social-emotional support
SYSTEMS: SCHOOL CLIMATE & INFRASTRUCTURE	
<ul style="list-style-type: none"> Foster collaborative relationships Create a shared vision Identify ways for all staff to contribute Ensure all students have access to extra-curricular activities Demonstrate culturally responsive practices Identify who has access Develop a district-based team 	<ul style="list-style-type: none"> Provide district-level professional learning Identify and remove barriers Regularly communicate outcomes Link multiple initiatives Review data Review and revise policy Select research-based practices

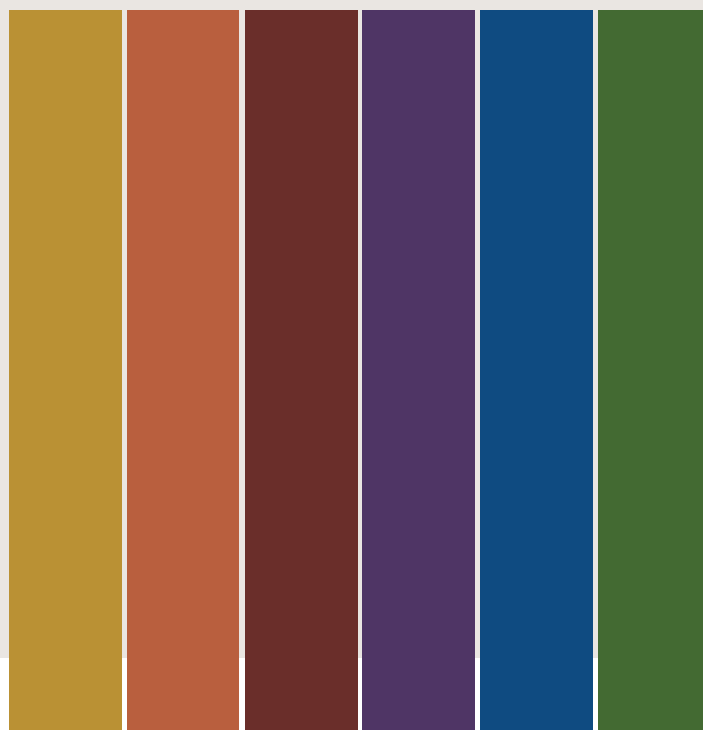
PROFESSIONAL LEARNING CATALOG STATE PRIORITIES

CONDITIONS OF LEARNING				
1 Basic Services	2 Implementation of State Standards	7 Course Access	9 Expelled Youth (COE Only)	10 Foster Youth (COE Only)
PUPIL OUTCOMES				
4 Student Achievement		8 Student Outcomes		
ENGAGEMENT				
3 Parent Involvement		5 Student Engagement		6 School Climate



SECTION I

Conferences • Programs • Communities of Practice
Network Opportunities for Educators



CONFERENCES & EVENTS

PL For updated information, go to sccoe.org/plportal

STRAND – ACADEMICS

Title	Description	Date	Intended Audience	Grade Level	Contact	State Priorities
National Bilingual/Multilingual Learner Advocacy Month Showcase	Do you know what effective programs for multilingual learners look like and what you can do to support these students on their journey to success? Join us at this showcase to learn from successful programs and network with others. You will be inspired by a wealth of innovative ideas.	April 22, 2021	T, A, C, G, SS, S, P	K - 12	Keysha Doutherd 408-453-4345 kdoutherd@sccoe.org	2, 4, 5, 6, 7
National History Day	Participants will learn how to promote student projects as a school initiative, learn about submitting projects in documentary and website categories, and learn about research strategies using online tools and how to develop scripts for video documentary projects.		T, A	All	Jhun Madriaga 408-453-4318 jmadriaga@sccoe.org	2
Santa Clara County Mock Trial Tournament	The SCCOE and the Santa Clara County Bar Association continue its venerable high school Mock Trial tradition with 22-24 high schools competing in the tournament. The seven-round, four-week tournament is presided over by sitting superior court judges and is scored by hundreds of area attorneys.		S	9 - 12	Jhun Madriaga 408-453-4318 jmadriaga@sccoe.org	2

STRAND – BEHAVIOR

Title	Description	Date	Intended Audience	Grade Level	Contact	State Priorities
Middle School Youth Conference	Middle school youth are encouraged to be part of the solution to the teen vaping problem and become a Peer Advocate. This training will prepare middle school youth to provide presentations to your peers while developing leadership and public speaking skills. Details coming soon!		S	6 - 8	Sonia Gutierrez 408-453-6762 sgutierrez@sccoe.org	5, 8
6th Annual Norcal PBIS/School Climate Symposium	"Creating Conditions for Belonging" is the theme of this year's symposium. Great speakers from all over the nation present at this event, as well as self-care stations on both days.	April 16 - 19, 2020	T, A, C, SS		Brenda Arroyo 408-453-6504 barroyo@sccoe.org	5, 6

Intended Audience – T: Teacher • A: Administrator • C: Coach • SS: Support Staff • G: Parent/Guardians • S: Students • P: Partners

CONFERENCES & EVENTS

For updated information, go to sccoe.org/plportal 

STRAND – SYSTEMS: SCHOOL CLIMATE AND INFRASTRUCTURE

Title	Description	Date	Intended Audience	Grade Level	Contact	State Priorities
Inclusion Collaborative State Conference	An interactive and reflective educational opportunity to learn evidence-based practices for individuals involved in the care and education of children with and without disabilities to enhance equity, diversity and inclusive practices in their respective programs and communities in which they live.	September 23 - 24, 2020	T, A, C, SS		Mayra Montanez 408-453-2716 mmontanez@sccoe.org	2, 4, 5, 6, 7
California Student Data Day	National, state, and local experts discussed how data usage can support school and student success and DataZone districts shared how data-driven decision making has made an impact on outcomes for their students.	October 5, 2020	T, A, C, SS		Nabil Shahin 408-453-4299 nshahin@sccoe.org	1, 2, 4, 5, 6, 9, 10

STRAND – FAMILY & COMMUNITY

Title	Description	Date	Intended Audience	Grade Level	Contact	State Priorities
Julia Robinson Mathematics Festival	In partnership with the American Institute of Mathematics (AIM), this festival will provide students with the opportunity to “play” with numbers and math problems in a social and cooperative setting. This is not a competition, but is an opportunity for students to have fun exploring math concepts.		T, A, C, SS, G, S	3 - 8	Teri Brickey 408-453-6688 tbrickey@sccoe.org	1, 2, 3, 4



Intended Audience – T: Teacher • A: Administrator • C: Coach • SS: Support Staff • G: Parent/Guardians • S: Students • P: Partners

PROGRAMS

PL For updated information, go to sccoe.org/plportal


STRAND – ACADEMICS

Title	Description	Date	Intended Audience	Grade Level	Contact	State Priorities
Education Preparation for Inclusive Classrooms (EPIC): Preliminary Education Specialist Credential	The EPIC Preliminary Credential program is designed to prepare candidates to earn their Preliminary Education Specialist Instruction Credential through a CCTC accredited program.	Year long	T, SS		Kalpana Thatte 408-453-4259 kthatte@sccoe.org EPIC@sccoe.org	1, 2
Education Preparation for Inclusive Classrooms (EPIC): Clear Education Specialist Induction Program	The EPIC Clear Teacher Induction Credential Program is designed to provide an option for teachers to clear their preliminary credentials through a CTC accredited program.	August 2020 - June 2022	T		Kalpana Thatte 408-453-4259 kthatte@sccoe.org EPIC@sccoe.org	1, 2
Education Preparation for Inclusive Classrooms (EPIC): Accelerated Pathway Program	The EPIC ACCELERATED PATHWAY is designed for the teacher with a Clear Multi Subject or Single Subject Credential seeking a special education credential.	August 2020 - June 2021	T		Kalpana Thatte 408-453-4259 kthatte@sccoe.org EPIC@sccoe.org	1, 2
Education Preparation for Inclusive Classrooms (EPIC): Earn One Add One grant informational meetings	The Earn One Add One grant is a local solution grant to address the shortage of Special Education Teachers. Interested parties are invited to attend to learn more about the EPIC program and our grant	January 6, 2020 - May 11, 2020	T, SS		Kalpana Thatte 408-453-4259 kthatte@sccoe.org EPIC@sccoe.org	1, 2



Intended Audience – T: Teacher • A: Administrator • C: Coach • SS: Support Staff • G: Parent/Guardians • S: Students • P: Partners

PROGRAMS

For updated information, go to sccoe.org/plportal 

STRAND – LEADERSHIP

Title	Description	Date	Intended Audience	Grade Level	Contact	State Priorities
LEAP Preliminary Administrative Services Credential	Leaders in Educational Administration Program prepares certificated staff for positions as educational administrators. Approved by the CTC and based on California Administrative Performance Expectations and California Professional Standards for Educational Leaders, LEAP offers a PASC program.	August 2020 - June 2021	T, C, SS	K - 12	Kalpna Thatte 408-453-4259 kthatte@sccoe.org	1
LEAP Clear Administrative Credential	Leaders in Educational Administration Program prepares certificated staff for positions as educational administrators. This program supports educators looking to clear their Administrative Services Credential.	August 2020 - June 2021	A	K - 12	Kalpna Thatte 408-453-4259 kthatte@sccoe.org	1
LEAP Informational Meetings	Attend a free information session to learn about our Leaders in Educational Administration Program, including enrollment requirements, and benefits of completing your administrative credential with LEAP.		T, A		Kalpna Thatte 408-453-4259 kthatte@sccoe.org	1
Cognitive Coaching Foundational Training Seminar	The Cognitive Coaching training enhances leading, coaching, and communication skills for educators.		T, A, C, SS		Brenda Mariano-Paz 408-453-4258 bmariano-paz@sccoe.org	1, 2
Cognitive Coaching Advanced Seminar	Participants will refine and extend the following core coaching capabilities and skills developed in Cognitive Coaching Foundational Training Seminar.		A, C		Brenda Mariano-Paz 408-453-4258 bmariano-paz@sccoe.org	1,2

STRAND – SYSTEMS

Title	Description	Date	Intended Audience	Grade Level	Contact	State Priorities
Differentiated Assistance	Differentiated Assistance is part of the system of support designed to support districts in improving student outcomes. DA work is a long term commitment to making change. Our team collaborates with districts on how to begin and sustain changes to systems resulting in improvement for students.				Liz Wolfe 408-453-6696 lwolfe@sccoe.org	

Intended Audience – T: Teacher • A: Administrator • C: Coach • SS: Support Staff • G: Parent/Guardians • S: Students • P: Partners

COMMUNITIES OF PRACTICE

PL For updated information, go to sccoe.org/plportal


STRAND – ACADEMICS

Title	Description	Date	Intended Audience	Grade Level	Contact	State Priorities
English Learners with Disabilities Community of Practice	Has your school or district embraced continuous improvement? Join teams comprised of general and special education educators to explore systems thinking and improvement ideas that are aligned to the EL Roadmap and the California Practitioners' Guide for Educating ELs with Disabilities.	October 15, 2020; November 12, 2020; January 14, 2021; February 25, 2021; March 25, 2021	T, A, C	K - 12	Keysha Doutherd 408-453-4345 kdoutherd@sccoe.org	2, 4, 5, 7
English Learner Community of Practice	Come join your fellow educators to collaborate on how to effectively teach English learners by leveraging the expertise of others. This Community of Practice (CoP) has a common goal of gaining knowledge in supporting English learners success.		T, A, C	K - 12	Deedy Camarena 408-453-6859 dcamarena@sccoe.org	2, 4
Dual Language Community of Practice	Come join your fellow teachers to collaborate on how to effectively teach in a dual language classroom to have a positive impact on student learning. We will discuss the needs of our work and network as a group to share ideas, best practices, and success stories.		T, A, C	K - 12	Deedy Camarena 408-453-6859 dcamarena@sccoe.org	2, 4
ELA/ELD Community of Practice	Come join your fellow educators to collaborate on how to effectively teach language development and literacy skills to have a positive impact on student learning. We will network as a group to share ideas, best practices, and success stories.		T, C	K - 5	Barb Flores 408-453-4302 bflores@sccoe.org	2, 4
My Name, My Identity: Valuing Our Students' Strengths and Voices	Join us for an exciting opportunity to be a part of a dynamic Community of Practice (CoP) focused on the English Learner (EL) Roadmap and the My Name, My Identity Initiative. The overall goal is to develop lesson modules that provide all students access to grade level standards through building inclusive learning environments and strengthening teacher and student relationships in the classroom.	May 6 or 12, 2020 June 17-19, 2020 September 29, 2020 October 22, 2020 November 17, 2020	T, C	K - 12	Keysha Doutherd 408-453-4345 kdoutherd@sccoe.org	2, 4, 5, 6



Intended Audience – T: Teacher • A: Administrator • C: Coach • SS: Support Staff • G: Parent/Guardians • S: Students • P: Partners

COMMUNITIES OF PRACTICE

For updated information, go to sccoe.org/plportal 

STRAND – LEADERSHIP

Title	Description	Date	Intended Audience	Grade Level	Contact	State Priorities
Administrator as Instructional Leader: Community of Practice	Collaborative Objectives: Build the instructional leadership capacity for site administrators; promote equity in all content areas; and provide networking opportunities for collective leadership.	October 27, 2020; January 21, 2021; March 25, 2021	A	K - 12	Teri Brickey 408-453-6688 tbrickley@sccoe.org	1, 4, 5
Arts Community of Practice Meetings	Join us as we discuss education topics around visual arts, media arts, dance, music, and theater for students of all ages. Learn about state and federal VAPA updates, curriculum/systems support for VAPA/arts integration, and engage in dialogue to shift arts education in Santa Clara County schools.	September 14, 2020; November 16, 2020; January 25, 2021; March 22, 2021; May 31, 2021	T, A, C, G, S, SS, P	TK - 12	Jennifer Janzen 408-453-6578 jjanzen@sccoe.org	2, 4, 5, 6, 7, 8

STRAND – SYSTEMS: SCHOOL CLIMATE AND INFRASTRUCTURE

Title	Description	Date	Intended Audience	Grade Level	Contact	State Priorities
MTSS Community of Practice	MTSS District Teams who have participated in the year 1 training are invited. Designed as a ToT model, teams will receive tools for MTSS implementation. Teams will continue to build and refine the MTSS structures needed, while implementing these structures at a pilot site.			N/A	Jessica Taylor 408-453-6520 jtaylor@sccoe.org	1, 2, 3, 4, 5, 6, 7, 8



Intended Audience – T: Teacher • A: Administrator • C: Coach • SS: Support Staff • G: Parent/Guardians • S: Students • P: Partners

NETWORKS

PL For updated information, go to sccoe.org/plportal

STRAND – ACADEMICS

Title	Description	Date	Intended Audience	Grade Level	Contact	State Priorities
Arts Teacher Network Meetings	Network with visual and performing arts teachers from schools and districts throughout the county. Learn new ideas from one another, get updates on relevant arts issues and events, energize one another by being with other arts educators	August 24, 2020; February 1, 2021; April 19, 2021	T	TK - 12	Jennifer Janzen 408-453-6578 jjanzen@sccoe.org	2, 4, 6, 7

STRAND – BEHAVIOR


Title	Description	Date	Intended Audience	Grade Level	Contact	State Priorities
Comprehensive Sex Ed. Network Meetings	The Comprehensive Sexual Education (CSE) Network Meetings bring together school districts, and community partners to discuss CSE implementation, California Healthy Youth Act (CHYA), the development of school policies, provides content expertise and resources.		A, P	6 - 12	Sonia Gutierrez 408-453-6762 sgutierrez@sccoe.org	2, 6, 8

STRAND – LEADERSHIP

Title	Description	Date	Intended Audience	Grade Level	Contact	State Priorities
TOSA Network	Learn more about how to support teachers in: Content, Pedagogy, Technology & Leadership skills! Connect and share with fellow coaches, participate in reflective conversations on CCSS, NGSS, STEAM, Educational Technology, Equity, and UDL.	September 15, 2020; October 20, 2020; November 17, 2020; January 19, 2021; February 23, 2021; March 16, 2021; April 20, 2021; May 18, 2021	A, C	TK - 12	Paula Leggett 408-453-6587 pleggett@sccoe.org	1, 2, 4, 5, 6, 8
Santa Clara County Mathematics Leadership Collaborative	This collaborative aims to engage participants equitable and inclusive mathematics practices; build and strengthen partnerships to leverage collective leadership; and increase participants' knowledge of current trends and research on mathematics teaching and learning.	October 13, 2020; December 8, 2020; February 2, 2021	T, A, C	K - 12	Teri Brickey 408-453-6688 tbrickley@sccoe.org	1, 4, 5
Environmental Literacy Leadership Collaborative	The Environmental Literacy Leadership Network will explore how to connect and partner with community-based organizations and collaborate on ways to infuse environmental literacy into our classrooms and schools.		T, C, SS	TK - 12	Paula Leggett 408-453-6587 pleggett@sccoe.org	1, 2, 4, 5, 6, 8

Intended Audience – T: Teacher • A: Administrator • C: Coach • SS: Support Staff • G: Parent/Guardians • S: Students • P: Partners

NETWORKS

For updated information, go to sccoe.org/plportal 

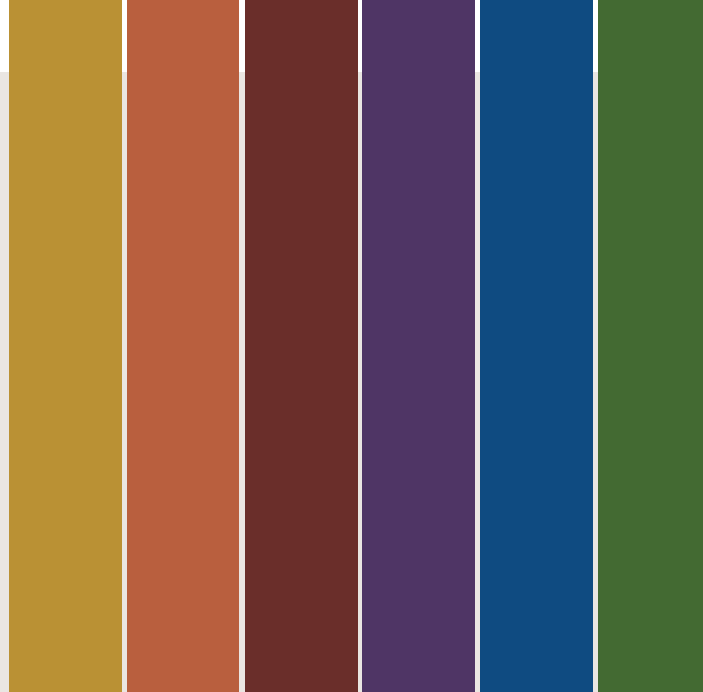
STRAND – LEADERSHIP

Title	Description	Date	Intended Audience	Grade Level	Contact	State Priorities
Site Administrators Network	This professional learning will allow Site Administrators from across the county to network around common achievements and challenges all in pursuit of continuous improvement. Hear from your colleagues. SCCOE staff will facilitate these "grass roots" discussions amongst fellow County colleagues.		A	K - 12	Mayra Ayala 408-453-6529 mayala@sccoe.org	1, 4, 5
Accountability Assessment/State & Federal Network	Network to allow districts to interact with each other and SCCOE staff regarding State and Federal Program requirements, state assessments and data, Accountability Guidelines and LCAP development and implementation; follows Assistant Superintendent meeting		A	K - 12	Jessica Taylor 408-453-6320 jtaylor@sccoe.org	1, 2, 4, 5, 6, 8
Asian American & Pacific Islander Educators Network	Who are Asian American & Pacific Islander (AAPI) students and educators? How can I address our unique needs and my professional growth? Join this network to explore critical topics that will make a positive difference to you and your AAPI students.	September 10, 2020; November 9, 2020; February 8, 2021; May 3, 2021	T, A, C	K - 12	Keysha Doutherd 408-453-4345 kdoutherd@sccoe.org	5, 6

STRAND – SYSTEMS

Title	Description	Date	Intended Audience	Grade Level	Contact	State Priorities
MTSS District Leads Network	These networks work to build local capacity within districts to facilitate successful implementation of MTSS, to provide continuing coaching support and district leadership to support school implementation efforts.		A, C, SS	N/A	Jessica Taylor 408-453-6520 jtaylor@sccoe.org	1, 2, 3, 4, 5, 6, 7, 8
Data Visualization Network	A convening of district leaders to develop and share data visualization resources related to the CA School Dashboard, statewide assessments, and other locally relevant outcome measures. District leaders will learn from their peers and provide input to county staff regarding resource development.		A, C, SS	K - 12	Deann Walsh dwalsh@sccoe.org	3, 4, 5, 6
CSI/TSI/ATSI Network	The CSI/TSI/ATSI network will be a time for sites to come together to share best practices around their theories of improvement as well as an opportunity to learn continuous improvement strategies to support your sites improvement efforts.		A	K - 12	Brenda Montes 408-453-4322 bmontes@sccoe.org	2, 4, 8

Intended Audience – T: Teacher • A: Administrator • C: Coach • SS: Support Staff • G: Parent/Guardians • S: Students • P: Partners



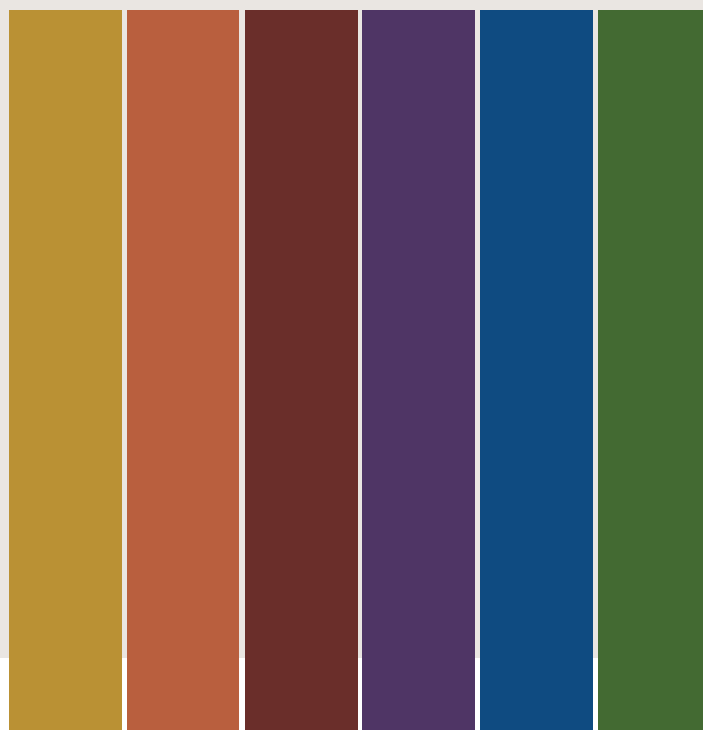
SECTION II

WORKSHOPS

Academics • Leadership • Behavior

Social-Emotional • Systems: School Climate and Infrastructure

Family & Community Engagement • LPC & SELPA



INNOVATION & INSTRUCTIONAL SUPPORT

Title or Topic	Description	Intended Audience	Grade Level	Contact	State Priorities
A Collaborative Forum for College and Career Readiness and Career Technical Education	Discuss and hear current updates on college and career readiness and CTE and updates on funding opportunities. Educators will share best practices, collaborate lessons on key college and career readiness standards, and plan best practices in the classroom.	T, A, SS	K - 12	Esther Chong 408-453-6959 echong@sccoe.org	1
Eureka Math Curriculum Support For Grades 6-8	Participants will learn how the program is structured while preparing to teach the first module. Emphasis will be placed on the instructional shifts necessary to implement the program as well as the assessment.	T, A, C	6 - 8	Teri Brickey 408-453-6688 tbrickley@sccoe.org	1, 2, 4
Eureka Math Curriculum Support For Grades K-5	Participants will learn how the program is structured while preparing to teach the first module. Emphasis will be placed on the instructional shifts necessary to implement the program as well as the assessment. Teachers will also engage in a model lesson.	T, A, C	K - 5	Teri Brickey 408-453-6688 tbrickley@sccoe.org	1, 2, 4
Fractions in the Common Core Classroom	In this series, participants will examine models that can be used to support students' conceptual understanding of fractions; learn sensemaking ways to support students with fraction operations; understand how context enhances understanding of fractions.	T, A, C	3 - 5	Teri Brickey 408-453-6688 tbrickley@sccoe.org	2, 4
Building the Bridge from Fractions to Ratios and Proportional Reasoning	In this series, participants will examine essential content knowledge and key instructional practices that support conceptual understanding of the topic; increase ways to elicit understanding that move beyond memorization of rules and procedures.	T, A, C	3 - 8	Teri Brickey 408-453-6688 tbrickley@sccoe.org	2, 4
Place Value and Numeracy with the CRA Approach	In this series, participants will examine the Concrete-Representation-Abstract (CRA) model to teach place value and numeracy; and investigate instructional strategies that support the CRA model.	T, A, C	K - 2	Teri Brickey 408-453-6688 tbrickley@sccoe.org	2, 4
Multiplication and Division with the CRA Approach	In this series, participants will examine the Concrete-Representation-Abstract (CRA) model to teach multiplication and division; and investigate instructional strategies that support the CRA model.	T, A, C	3 - 5	Teri Brickey 408-453-6688 tbrickley@sccoe.org	2, 4
Implicit Bias in Mathematics Series	Participants in this introductory series will promote self-analysis to understand implicit bias; identify how such bias negatively impacts instruction, assessment, curriculum, school policies, and student achievement; and pinpoint strategies to ameliorate such negative effects of bias.	T, A, C	TK - 12	Teri Brickey 408-453-6688 tbrickley@sccoe.org	1, 2, 4, 5

ACADEMICS

PL For updated information, go to sccoe.org/plportal

INNOVATION & INSTRUCTIONAL SUPPORT

Title or Topic	Description	Intended Audience	Grade Level	Contact	State Priorities
Universal Design for Learning in the Mathematics Classroom	Participants will increase their understanding of Universal Design for Learning by articulating the relationship among learner variability, barriers to learning and becoming an expert learner. Participants will also learn about mathematical literacy and how it is implemented in the classroom.	T, A, C	K - 5	Teri Brickley 408-453-6688 tbrickley@sccoe.org	2, 5
Math in the Early Years (Pre-School, TK)	Participants will learn ways to "bring math to life" in their classrooms and the important role early mathematical understanding plays in future mathematics success.	T	Pre-school, TK	Teri Brickley 408-453-6688 tbrickley@sccoe.org	2, 4
Beyond the Surface: Depth in Mathematics through IM Curriculum 6 - 8	The sessions focus on supporting teachers to understand the math progressions, instructional routines that promote thinking and discourse, and the skills needed to, make sense of, and respond to student thinking using tools in the IM curriculum.	T, A, C	5 - 9	Teri Brickley 408-453-6688 tbrickley@sccoe.org	1, 2, 4, 7
Beyond the Surface: Depth in Mathematics through IM Curriculum - High School	The sessions focus on supporting teachers to understand the math progressions, instructional routines that promote thinking and discourse, and the skills needed to, make sense of, and respond to student thinking using tools in the IM curriculum.	T, A, C	7 - 12	Teri Brickley 408-453-6688 tbrickley@sccoe.org	1, 2, 4, 7
Mathematical Literacy	Come, engage in solving mathematical tasks that equip educators of skills and tools that help students know the role that mathematics plays in the world and make well-founded judgements and decisions needed by constructive, engaged and reflective 21st Century citizens.	T, A, C	4 - 12	Teri Brickley 408-453-6688 tbrickley@sccoe.org	1, 2, 4, 7
Disruptive Numbers: The Chaos Numbers Bring to Uncover Hidden Stories	In a world increasingly powered by data, data literacy is critically important. "The illiterate of the 21st century will not be those who cannot read and write, but those who cannot learn, unlearn, and relearn." Sessions use disruptive numbers to unleash the power of learning mathematics.	T, A, C	5 - 12	Teri Brickley 408-453-6688 tbrickley@sccoe.org	1, 2, 4, 7
Assessment for Learning (East Side Alliance)	The Assessment for learning (AFL) series is an approach to teaching and learning that aims to "close the gap" between a learner's current situation and where they want to be in their learning and achievement.	T, A, C	3 - 10	Teri Brickley 408-453-6688 tbrickley@sccoe.org	1, 2, 4, 7
Math Success for All	6-part series designed for site-based teams to sustain the effective delivery of high quality math instruction focused on equitable access and support for all students, specifically students with special needs. The team approach ensures that there is time and space for collaboration and support.	T, A	K - 6	Teri Brickley 408-453-6688 tbrickley@sccoe.org	1, 2, 4, 7

PROFESSIONAL LEARNING & INSTRUCTIONAL SUPPORT **EQUITY & EDUCATIONAL PROGRESS** **EXECUTIVE SERVICES**

Intended Audience – T: Teacher • A: Administrator • C: Coach • SS: Support Staff • G: Parent/Guardians • S: Students • P: Partners

INNOVATION & INSTRUCTIONAL SUPPORT

Title or Topic	Description	Intended Audience	Grade Level	Contact	State Priorities
Mathematical Reasoning with Connection (MRWC)	MRWC is a 4th year high school math course designed to prepare students for the rigors of college math courses. MRWC is intended as a 4th year option for students who have successfully completed Integrated 1-3 (or Alg 1-2 and Geometry) and is planning to enter a college or university.	T, A, C, SS	9 - 12	Teri Brickley 408-453-6688 tbrickley@sccoe.org	1, 2, 4, 7
Creating NGSS Performance Assessments	Once you've piloted or are adopting science curriculum, it's time to consider how to assess student learning with the 3 dimensional approach of NGSS. Join us for 3 days of developing, refining, and analyzing performance assessments that can be used as science benchmarks.	T, A, C	3 - 12	Paula Leggett 408-453-6587 pleggett@sccoe.org	1, 2, 4, 5, 7, 8
CAST Academy	Explore the California Science Test (CAST) training test items and the latest resources surrounding this assessment. Learn about the test design & expectations and consider the implications of the NGSS for improved teaching & learning.	T, A	K - 12	Paula Leggett 408-453-6587 pleggett@sccoe.org	4, 5, 8
Bringing Design Thinking and the Engineering Processes to your NGSS Science Lessons	Engineering is an approach to solving a problem. It encourages critical thinking, as well as learning logical sequences for resolving problems. Join SCCOE and RAFT as we explore different entry points to both Design Thinking and the Engineering Process at each session.	T, A, C	TK - 12	Paula Leggett 408-453-6587 pleggett@sccoe.org	1, 2, 4, 5, 7, 8
K-12 Environmental Connections to NGSS	"Experience and debrief a grade-band appropriate, NGSS and EP&C aligned lesson. Meet local providers of environmental educational experiences. Work collaboratively to identify and plan for using local phenomena to engage students. Be inspired by our environment.	T, A, C	K - 12	Paula Leggett 408-453-6587 pleggett@sccoe.org	1, 2, 4, 5, 7, 8
Science Notebooking, Visual Notetaking, and Sketchnoting	Learn about why and how visual notetaking and sketchnoting for science is an important tool for student learning. We will create our own notebooks and learn about digital tools that can support the development of student science portfolios.	T, A, C	TK - 12	Paula Leggett 408-453-6587 pleggett@sccoe.org	2, 4, 5
Ambitious Science Teaching Book Study	This blended (online and in person) book study will allow for participants to read and discuss Ambitious Science Teaching and use the tools presented in the book and on their website.	T, A, C	TK - 12	Paula Leggett 408-453-6587 pleggett@sccoe.org	2, 4, 5
Supporting English Learners in the Secondary Science Classroom	As students learn science concepts, they should also be learning to communicate their discoveries. Experience ways to support all learners utilizing scaffolds to support academic language acquisition. Leave with strategies for planning science lessons with language development in mind.	T, C	6 - 12	Paula Leggett 408-453-6587 pleggett@sccoe.org	1, 2, 4, 5, 7, 8

ACADEMICS

PL For updated information, go to sccoe.org/plportal

■ INNOVATION & INSTRUCTIONAL SUPPORT

Title or Topic	Description	Intended Audience	Grade Level	Contact	State Priorities
Environmental Literacy Summit	Santa Clara County community based organizations and teacher leaders will present environmental literacy projects and lessons based on the work of the SCCOE Environmental Literacy Leadership Network.	T, A, C	TK - 12	Paula Leggett 408-453-6587 pleggett@sccoe.org	2, 4, 5
Summer Environmental Learning Collaborative	This series will build teacher capacity for designing and delivering learning experiences that integrate real-world environmental and social issues, are student centered, and problem- and project-based.	T, C	TK - 12	Paula Leggett 408-453-6587 pleggett@sccoe.org	2, 4, 5
California Arts Standards: Introductory Training	Teachers and educational leaders will be guided through the new CA Arts Standards for Public Schools for all art disciplines. Participants will understand how standards are organized and begin to adapt them to their curriculum. This course is for discipline specific or arts integration teachers.	T, A	TK - 12	Jennifer Janzen 408-453-6578 jjanzen@sccoe.org	2
California Arts Framework Training	Teachers and educational leaders will be guided through the new CA Arts Standards for Public Schools Framework for all art disciplines. Understand how standards and framework are organized and adapt them to your curriculum. This course is for discipline specific or arts integration teachers.	T, A	TK - 12	Jennifer Janzen 408-453-6578 jjanzen@sccoe.org	2

■ MULTILINGUAL & HUMANITIES EDUCATION

Title or Topic	Description	Intended Audience	Grade Level	Contact	State Priorities
Summative English Language Proficiency Assessments for California (ELPAC) Administrative and Scoring Training	Do you know that English learners are required to take the English Language Proficiency Assessment for California (ELPAC) annually? Come join us in learning how to administer, score, and train others on how to administer the summative ELPAC.	A, SS	K - 12	Keysha Doutherd 408-453-4345 kdoutherd@sccoe.org	2
Meeting the Needs of Newcomer English Learners through Support, Empathy and Advocacy	How can schools be prepared to serve students who are attending a U.S. school for the first time? This workshop will prepare teachers to provide social, emotional and academic support for newly-immigrated students who are at the English language proficiency level.	T, C	K - 12	Deedy Camarena 408-453-6859 dcamarena@sccoe.org	2, 4
Long Term English Learners: Identify, Support and Assess	This three-day series will provide tools to build systems of support and assess growth for Long-Term English Learners (LTELs). Participants will identify the needs of LTELs, design effective instruction using research-based strategies, and analyze assessment data to determine next steps.	T, C	K - 12	Deedy Camarena 408-453-6859 dcamarena@sccoe.org	2, 4

■ PROFESSIONAL LEARNING & INSTRUCTIONAL SUPPORT ■ EQUITY & EDUCATIONAL PROGRESS ■ EXECUTIVE SERVICES

Intended Audience – T: Teacher • A: Administrator • C: Coach • SS: Support Staff • G: Parent/Guardians • S: Students • P: Partners

MULTILINGUAL & HUMANITIES EDUCATION

Title or Topic	Description	Intended Audience	Grade Level	Contact	State Priorities
English Learner Roadmap Toolkit for Teachers	What does the English Learner (EL) Roadmap mean to you as a classroom teacher? Come explore instructional practices and identify strategic actions to ensure English learners have meaningful access to relevant and rigorous curriculum in safe and affirming environments.	T, C	TK - 12	Keysha Doutherd 408-453-4345 kdoutherd@sccoe.org	2, 4, 5, 6, 7
English Learner Toolkit of Strategies	Do you want to use high leverage instructional strategies to increase content understanding and English language proficiency of English learners? Come explore useful strategies across the content areas and take intentional steps toward enhanced professional practices in maximizing learning for ELs.	T, C	TK - 12	Keysha Doutherd 408-453-4345 kdoutherd@sccoe.org	2, 4, 5, 7
Initial English Language Proficiency Assessments for California (ELPAC) Administrative and Scoring Training	Do you know that students in grades TK – 12 who first enter CA schools and have a home language other than English are required to take the ELPAC to determine if they are English learners? Come join us in learning how to administer, score, and train others on how to administer the initial ELPAC.	A, SS	K - 12	Keysha Doutherd 408-453-4345 kdoutherd@sccoe.org	2
Access for All Professional Learning System	"How do we build an instructional support system to ensure that every student receives high quality Tier 1 universal instruction? Join us on strengthening teaching and learning through creating culturally and linguistically responsive pedagogy, and implementation of the ELD and content standards.	T, A, C	TK - 12	Keysha Doutherd 408-453-4345 kdoutherd@sccoe.org	2, 4
Equitable Assessments for English Learners	This training series is focused on understanding rigorous and responsive performance tasks that are designed to build off English learners' strengths so that they can equitably demonstrate content and language learning, while supporting their language development.	T, C	K - 12	Keysha Doutherd 408-453-4345 kdoutherd@sccoe.org	2, 4
Academic Discourse	Why is speaking and listening so important? Participants will explore different ways to uncover barriers and engage students in academic discourse to make meaning of content instruction.	T, A, C	K - 5	Barb Flores 408-453-4302 bflores@sccoe.org	2, 4
Bridging the Gap in Reading	Need strategies for reading intervention? Participants will explore a variety of research-based reading intervention strategies for small or whole group instruction that may be applicable/adaptable to their own classrooms.	T, A, C	K - 5	Barb Flores 408-453-4302 bflores@sccoe.org	2, 4
Reading Practices in Action: Strengthening Tier I Instruction	This workshop will focus on discovering the fundamental knowledge in effective standards-aligned and research-based reading and assessment practices for readers at all levels, including English Learners and students with literacy-related dyslexia.	T, A, C	K - 2	Barb Flores 408-453-4302 bflores@sccoe.org	2, 4

ACADEMICS

PL For updated information, go to sccoe.org/plportal

MULTILINGUAL & HUMANITIES EDUCATION

Title or Topic	Description	Intended Audience	Grade Level	Contact	State Priorities
Reading Practices in Action: Strengthening Tier I Instruction	This workshop will focus on discovering the fundamental knowledge in effective standards-aligned and research-based reading and assessment practices for readers at all levels, including English Learners and students with literacy-related dyslexia.	T, A, C	3 - 5	Barb Flores 408-453-4302 bflores@sccoe.org	2, 4
Implementing the FAIR Education Act and Teaching LGBTQ History for 11th Grade History Teachers	Are you struggling with how to implement the requirements of the FAIR Act? Join this cohort of 11th grade U.S. History teachers to learn LGBTQ history and strategies for inclusive integration. Teachers receive 11th Grade Teaching LGBTQ History Curriculum Guide and more!	T	11	Jhun Madriaga 408-453-4318 jmadriaga@sccoe.org	2
Immigration Stories: How to Interview, Write, and Publish Personal Narratives	Teach students to write a personal narrative about an individual's immigration story. Questioning and interviewing techniques; as well as, writing skills are utilized. Completed narratives can be published in the "Made Into America" Online Archive with approval.	T	6 - 12	Jhun Madriaga 408-453-4318 jmadriaga@sccoe.org	2
History-Social Science Framework Series CLIC Project Region 5	The HSS Framework Implementation Project includes many important elements, all integral for the successful implementation of the HSS Framework. The primary components are a focus on inquiry, CoPs, rollout activities, and resources.	T, A, C, SS	9 - 12	Jhun Madriaga 408-453-4318 jmadriaga@sccoe.org	2
Backward Design with a Twist: The Inquiry Design Model in Social Studies	Planning instruction with the end in mind is at the heart of backward design. Take your lessons up a notch and learn how to utilize inquiry to stimulate student's minds and promote civic action in the classroom.	T, C	K - 12	Jhun Madriaga 408-453-4318 jmadriaga@sccoe.org	2
How to Engage the Disengaged Learner: Instructional Supports for Success	How do you manage a respectful, classroom community that supports inquiry-based learning in social studies, even for those that seem to be disengaged? This interactive three-day workshop series is designed for both new and veteran teachers looking for some basic tools to ensure student success.	T, C	K - 12	Jhun Madriaga 408-453-4318 jmadriaga@sccoe.org	2
Effective Instruction for English Learners and Long-Term English Learners in History-Social Science (3-day series)	This series provides training around effective evidenced-based instructional practices for ELs and LTELs to meet the shifts laid out in the History-Social Science Framework. The series also trains on the framework itself and discipline-specific literacy practices, aka the Historian's Craft.	T, A, C	TK - 12	Jhun Madriaga 408-453-4318 jmadriaga@sccoe.org	2
Critical Literacy	Explore Critical Literacy, the practice of challenging texts through analyzing the roles that power, culture, class, and gender play. Understand that others' perspectives exist and are influenced by the author's and reader's experiences - crucial for surviving the information-dense 21st century.	T, A, C	9 - 12	Jhun Madriaga 408-453-4318 jmadriaga@sccoe.org	2

PROFESSIONAL LEARNING & INSTRUCTIONAL SUPPORT **EQUITY & EDUCATIONAL PROGRESS** **EXECUTIVE SERVICES**

Intended Audience – T: Teacher • A: Administrator • C: Coach • SS: Support Staff • G: Parent/Guardians • S: Students • P: Partners

EDUCATIONAL TECHNOLOGY & LEADERSHIP

Title or Topic	Description	Intended Audience	Grade Level	Contact	State Priorities
Innovation in the Real World	Support student engagement through real world topics including classroom design, ethics, sustainable solutions, and artificial intelligence. See full description of sessions at bit.ly/edtechpathways .	T, A, C	K - 12	Craig Blackburn 408-453-6524 cblackburn@sccoe.org	2, 4, 5
Personalized Learning in the Classroom	How do you personalize learning to meet each student's learning needs? Session include an introduction to personalized learning, gamification and digital badging. See full description of sessions at bit.ly/edtechpathways .	T, A, C	K - 12	Craig Blackburn 408-453-6524 cblackburn@sccoe.org	2, 4, 5
Experience a Maker Environment	Understand how computer science supports student engagement with sessions in coding, robotics and 3D modeling. Includes sessions on supplying a makerspace. See full description of sessions at bit.ly/edtechpathways .	T, A, C	K - 12	Craig Blackburn 408-453-6524 cblackburn@sccoe.org	2, 4, 5
Manage a Maker Environment	Focus on lesson design, materials acquisition and classroom management. See full description of sessions at bit.ly/edtechpathways .	T, A, C	K - 12	Craig Blackburn 408-453-6524 cblackburn@sccoe.org	2, 4, 5
Design Thinking	See how using this framework develops both academic and life skills in students. Sessions include introduction and detailed lesson design. See full description of sessions at bit.ly/edtechpathways .	T, A, C	K - 12	Craig Blackburn 408-453-6524 cblackburn@sccoe.org	2, 4, 5
Project-based Learning	PBLs allows students to learn while solving real world problems. Session include lesson writing, presentation, and assessment of projects. See full description of sessions at bit.ly/edtechpathways .	T, A, C	K - 12	Craig Blackburn 408-453-6524 cblackburn@sccoe.org	2, 4, 5
Virtual and Multimedia Learning	Create transformative lessons that engage students in using video, virtual and augmented reality, and podcasting. See full description of sessions at bit.ly/edtechpathways .	T, A, C	K - 12	Craig Blackburn 408-453-6524 cblackburn@sccoe.org	2, 4, 5
Creativity in a G Suite Environment	If you are a G Suite district, we can design sessions that help teachers facilitate lessons that allow your students to create and deliver creative outcomes. Contact us for more information.	T, A, C	K - 12	Craig Blackburn 408-453-6524 cblackburn@sccoe.org	2, 4, 5
Introduction to Computer Science	Ready to build your own understanding of the computer science standards? This session will introduce you to core concepts, practices and interdisciplinary integration of standards, and get you thinking how you can start applying them into the learning today.	T, A, C	K - 12	Karen Larson 408-453-6523 klarson@sccoe.org	2, 4, 5
Computational Thinking in the ELA and History/Social Science Classroom	This session will focus on the application of computational thinking in lessons not commonly associated with it. Learn how you can more actively engage students using this pedagogy, including using bots, in a hands on workshop.	T, A, C	K - 12	Karen Larson 408-453-6523 klarson@sccoe.org	2, 4, 5

ACADEMICS

PL For updated information, go to sccoe.org/plportal

EDUCATIONAL TECHNOLOGY & LEADERSHIP

Title or Topic	Description	Intended Audience	Grade Level	Contact	State Priorities
Computational Thinking for Every Educator	See how you can use the four concepts of computational thinking (decomposition, patterns, abstraction, algorithms) using the content you are already teaching. Get students to think computationally without major revisions to your lessons establishes a mindset they will need as they grow and develop.	T, A, C	K - 12	Karen Larson 408-453-6523 klarson@sccoe.org	2, 4, 5
Computer Science Summer Camp	Are you wondering how to survive the implementation of the Computer Science standards? Join us in this 2-day camp where you will acquire skills and tools that will help get you started.	T, A, C	K - 12	Craig Blackburn 408-453-6524 cblackburn@sccoe.org	2, 4, 5

EDUCATIONAL TECHNOLOGY ONLINE BADGED COURSES

Title or Topic	Description	Intended Audience	Grade Level	Contact	State Priorities
Deepening Critical Thinking with the G Suite	How does critical thinking help develop learning, as well as how to analyze information in our modern world? Includes Google Forms, Sheets, Search and Safety Center.	T, A, C	K - 12	Craig Blackburn 408-453-6524 cblackburn@sccoe.org	2, 4, 5
Future Ready Communication with the G Suite	How does building communication skills engage students and develop practices that prepare them for the future? Includes Google Mail, Calendar, Hangouts, and Groups.	T, A, C	K - 12	Craig Blackburn 408-453-6524 cblackburn@sccoe.org	2, 4, 5
Inspiring Authentic Creativity with the G Suite	How does creativity spark the development of skills and the retainment of content knowledge? Includes Google Slides, Sites, Docs and YouTube.	T, A, C	K - 12	Craig Blackburn 408-453-6524 cblackburn@sccoe.org	2, 4, 5
Meaningful Collaboration with the G Suite	How can an online learning space support collaboration and build a growth mindset within students? Includes Google Classroom, Drive, Ed Directory and Tasks.	T, A, C	K - 12	Craig Blackburn 408-453-6524 cblackburn@sccoe.org	2, 4, 5
Connecting Your Classroom for Global Learning	How can we extend student learning to include global perspectives?	T, A, C	K - 12	Craig Blackburn 408-453-6524 cblackburn@sccoe.org	2, 4, 5
Digital Lesson Planning	How is creativity evident in your learning environment? How does curation of material help you find, save, and share content with others?	T, A, C	K - 12	Craig Blackburn 408-453-6524 cblackburn@sccoe.org	2, 4, 5
Do's & Don'ts For Mainstream Teachers of Beginning ELL	How can teachers of Beginning English Language Learners (ELLs) and mainstream teachers alike benefit from the same set of curriculum and cultural considerations when planning learning experiences?	T, A, C	K - 12	Craig Blackburn 408-453-6524 cblackburn@sccoe.org	2, 4, 5, 8

PROFESSIONAL LEARNING & INSTRUCTIONAL SUPPORT **EQUITY & EDUCATIONAL PROGRESS** **EXECUTIVE SERVICES**

Intended Audience – T: Teacher • A: Administrator • C: Coach • SS: Support Staff • G: Parent/Guardians • S: Students • P: Partners

EDUCATIONAL TECHNOLOGY ONLINE BADGED COURSES

Title or Topic	Description	Intended Audience	Grade Level	Contact	State Priorities
Do's & Don'ts for Mainstream Teachers of Intermediate ELL	How can teachers of Intermediate English Language Learners (ELLs) and mainstream teachers alike benefit from the same set of curriculum and cultural considerations when planning learning experiences?	T, A, C	K - 12	Craig Blackburn 408-453-6524 cblackburn@sccoe.org	2, 4, 5, 8
Do's & Don'ts for Mainstream Teachers of Advanced ELL	How can teachers of Advanced English Language Learners (ELLs) and mainstream teachers alike benefit from the same set of curriculum and cultural considerations when planning learning experiences?	T, A, C	K - 12	Craig Blackburn 408-453-6524 cblackburn@sccoe.org	2, 4, 5, 8
PLAY: Powerful Learning And You	How does innovative learning support development of future-ready skills and content knowledge?	T, A, C	2 - 12	Craig Blackburn 408-453-6524 cblackburn@sccoe.org	2, 4, 5
Simple Steps to Integrate Technology Today	How can technology enhance instruction and learning for both teachers and students?	T, A, C	K - 12	Craig Blackburn 408-453-6524 cblackburn@sccoe.org	2, 4, 5
Digital Accessibility in the Classroom	How can educators ensure that all learners thrive when using technology?	T, A, C	K - 12	Craig Blackburn 408-453-6524 cblackburn@sccoe.org	2, 4, 5
Growth Mindset and Technology Integration in Your Classroom	How can we provide students with strategies to help them build their intelligence, talent, and personality well into adulthood?	T, A, C	K - 12	Craig Blackburn 408-453-6524 cblackburn@sccoe.org	2, 4, 5
Using Technology-Rich Pedagogies to Inspire Learning	How can students develop higher order thinking skills through the integration of technology?	T, A, C	K - 12	Craig Blackburn 408-453-6524 cblackburn@sccoe.org	2, 4, 5
Digital Citizenship & Literacy	How can we help our students, parents, and community members be responsible digital citizens?	T, A, C	K - 12	Craig Blackburn 408-453-6524 cblackburn@sccoe.org	2, 3, 4, 5, 6
Fake News, or Not?	How can we increase the role of critical thinking in digital learning and research?	T, A, C	K - 12	Craig Blackburn 408-453-6524 cblackburn@sccoe.org	2, 4, 5
Authentic Learning through Artificial Intelligence	How does Artificial Intelligence support students in real-world learning experiences?	T, A, C	K - 12	Craig Blackburn 408-453-6524 cblackburn@sccoe.org	2, 4, 5

ACADEMICS

PL For updated information, go to sccoe.org/plportal

EDUCATIONAL TECHNOLOGY ONLINE BADGED COURSES

Title or Topic	Description	Intended Audience	Grade Level	Contact	State Priorities
Inspiring Classroom Design	How does environment impact learning in the K12 classroom?	T, A, C	K - 12	Craig Blackburn 408-453-6524 cblackburn@sccoe.org	2, 4, 5
Introduction to Computer Science	How can educators help prepare students to be college and career ready through the use of the California State Computer Science standards?	T, A, C	K - 12	Craig Blackburn 408-453-6524 cblackburn@sccoe.org	2, 4, 5
Design Thinking for Creativity & Innovation	How can we develop problem-solving and collaboration skills in our students, colleagues, and staffs while they learn content and skills in context to real life issues?	T, A, C	K - 12	Craig Blackburn 408-453-6524 cblackburn@sccoe.org	2, 4, 5
Sketchnoting: Making Thinking Visible	How does sketchnoting support learners in creatively visualizing their thinking?	T, A, C	K - 12	Craig Blackburn 408-453-6524 cblackburn@sccoe.org	2, 4, 5

CALIFORNIA PRESCHOOL INSTRUCTIONAL NETWORK

Title or Topic	Description	Intended Audience	Grade Level	Contact	State Priorities
Overview Preschool Program Guidelines	Review the components and structure of the Preschool Program Guidelines. Discuss how to utilize and apply information from the Preschool Program Guidelines in a preschool program. http://santaclara.k12oms.org/980-181887	T, A, C, SS, G, P	Preschool	Monica Bravo 408-453-6802 mbravo@sccoe.org	1
Visual & Performing Arts: Dance	Discuss the integration opportunities between Volumes 1, 2, and 3 of the California Preschool Learning Foundations. Utilize strategies identified for dual language learners and for children with special needs. http://santaclara.k12oms.org/980-181920	T, A, C, SS, G, P	Preschool	Monica Bravo 408-453-6802 mbravo@sccoe.org	1
The Integrated Nature of Learning: STEM Focus	View examples of the integrated nature of learning through science and math. Identify, discuss and practice how to co-construct curriculum through dynamic planning in science and math. http://santaclara.k12oms.org/980-181921	T, A, C, SS, G, P	Preschool	Monica Bravo 408-453-6802 mbravo@sccoe.org	1
Language & Literacy: Conversations	Review the language and literacy domain and three strands. Focus on the listening and speaking strand. Read research findings on oral language. Practice research-based strategies. http://santaclara.k12oms.org/980-181922	T, A, C, SS, G, P	Preschool	Monica Bravo 408-453-6802 mbravo@sccoe.org	1
Language & Literacy: Dialogic Reading	Recognize the language and literacy strategies outlined in the framework that focus on dialogic reading. Discover the research supporting dialogic reading. http://santaclara.k12oms.org/980-181923	T, A, C, SS, G, P	Preschool	Monica Bravo 408-453-6802 mbravo@sccoe.org	1

PROFESSIONAL LEARNING & INSTRUCTIONAL SUPPORT **EQUITY & EDUCATIONAL PROGRESS** **EXECUTIVE SERVICES**

Intended Audience – T: Teacher • A: Administrator • C: Coach • SS: Support Staff • G: Parent/Guardians • S: Students • P: Partners

CALIFORNIA PRESCHOOL INSTRUCTIONAL NETWORK

Title or Topic	Description	Intended Audience	Grade Level	Contact	State Priorities
Health Overview	Discover how to use the California Preschool Learning Foundations (PLF), and the California Preschool Curriculum Framework (PCF), to enrich learning and development opportunities in health for all preschool children. http://santaclara.k12oms.org/980-181924	T, A, C, SS, G, P	Preschool	Monica Bravo 408-453-6802 mbravo@sccoe.org	1
Visual & Performing Arts: Music	Discuss the importance of music education according to the California Preschool Learning Foundations and the California Preschool Curriculum Framework to support all preschool children develop their skills and knowledge in music. http://santaclara.k12oms.org/980-181925	T, A, C, SS, G, P	Preschool	Monica Bravo 408-453-6802 mbravo@sccoe.org	1
Math: Geometry	Explain how the DRDP (2015) and the NCTM Standards relate to the mathematics foundations. Discover the research behind the practice. Explore strategies to make geometry come to life in the classroom. http://santaclara.k12oms.org/980-181926	T, A, C, SS, G, P	Preschool	Monica Bravo 408-453-6802 mbravo@sccoe.org	1
Math: Number Sense	Discuss key concepts in the Number Sense strand of the California Preschool Learning Foundations (PLF). Identify key strategies in the California Preschool Curriculum Framework (PCF) regarding Number Sense development. http://santaclara.k12oms.org/980-181927	T, A, C, SS, G, P	Preschool	Monica Bravo 408-453-6802 mbravo@sccoe.org	1
Language & Literacy: Comprehension	Discover the developmental progression of the foundations for the Comprehension and Analysis of Age-Appropriate Text sub strand. Practice, plan, and apply various interactions, strategies, and environment opportunities. http://santaclara.k12oms.org/980-181928	T, A, C, SS, G, P	Preschool	Monica Bravo 408-453-6802 mbravo@sccoe.org	1
Language & Literacy: Literacy for All	Discuss the idea of literacy for all and the law that supports literacy for all. Identify how California's preschool resources embody literacy for all children. Practice some strategies to support literacy for all students. http://santaclara.k12oms.org/980-181929	T, A, C, SS, G, P	Preschool	Monica Bravo 408-453-6802 mbravo@sccoe.org	1
Language & Literacy: Language Use and Convention/Grammar	Utilizing key concepts of Language Use and Conventions and Grammar sub strands: practice, plan, and apply various interactions, strategies, and environment opportunities for the preschool classroom. http://santaclara.k12oms.org/980-181930	T, A, C, SS, G, P	Preschool	Monica Bravo 408-453-6802 mbravo@sccoe.org	1
Language & Literacy: Vocabulary	Use strategies from the California Preschool Curriculum Framework, Volume 1 to practice, plan, and apply various interactions, strategies, and environment opportunities to support the Vocabulary strand. http://santaclara.k12oms.org/980-181931	T, A, C, SS, G, P	Preschool	Monica Bravo 408-453-6802 mbravo@sccoe.org	1

ACADEMICS

PL For updated information, go to sccoe.org/plportal

CALIFORNIA PRESCHOOL INSTRUCTIONAL NETWORK

Title or Topic	Description	Intended Audience	Grade Level	Contact	State Priorities
PEL Guide: Resource Guide Training	Identify strategies that will allow anyone who plays a supporting role in the education of preschool English learners to enhance their programs in moving children toward academic English mastery. http://santaclara.k12oms.org/980-181932	T, A, C, SS, G, P	Preschool	Monica Bravo 408-453-6802 mbravo@sccoe.org	1
Physical Development: Perceptual-Motor Skills and Movement Concepts	Discuss how perceptual-motor coordination is the process of receiving, interpreting, and using information from the senses (visual, auditory touch, smell, taste and kinesthetic) to carry out the physical output. Explain how movement concepts provide cognitive awareness of movement.	T, A, C, SS, G, P	Preschool	Monica Bravo 408-453-6802 mbravo@sccoe.org	1
The Powerful Role of Play in Education	Discuss <i>The Powerful Role of Play in Education</i> . Explore the connections between play and learning through group activities and readings. Experience the benefits and debunk myths about play and learning. Plan opportunities for individualization and scaffolding within the reflective cycle.	T, A, C, SS, G, P	Preschool	Monica Bravo 408-453-6802 mbravo@sccoe.org	1

INCLUSION COLLABORATIVE

Title or Topic	Description	Intended Audience	Grade Level	Contact	State Priorities
Autism Spectrum Disorder & Practical Strategies	Overview of Autism Spectrum Disorder (ASD) and the importance of environmental supports, sensory supports and strategies for supporting children with ASD.	T, C	0 - 12 Grade	Inclusion Collaborative 408-453-6756 inclusion@sccoe.org	1, 2, 5, 7, 8
Adaptations and Modifications	Learn how to align class activities and individual students goals via adaptations and modifications. Adaptations are changes made to the environment, curriculum, instruction and/or assessment practices in order for a student to be a successful learner.	T, A, C	0 - 12 Grade	Inclusion Collaborative 408-453-6756 inclusion@sccoe.org	1, 4
Evidence-Based Practices to Support ALL Learners	Learn evidence-based practices to support all learners in academic, behavioral, and social-emotional learning within quality, inclusive school environments.	T, A	0 - 12 Grade	Inclusion Collaborative 408-453-6756 inclusion@sccoe.org	2, 4
Universal Design for Learning		T, A	0 - 12 Grade	Inclusion Collaborative 408-453-6756 inclusion@sccoe.org	1, 2
CCSS Alignment w/ Special Education - ELA	Learn how to align grade-level Common Core English language arts standards, instruction, and assessment to student IEP goals, including that of students with moderate/severe disabilities.	T, A, C	TK - 12	Inclusion Collaborative 408-453-6756 inclusion@sccoe.org	1, 2

PROFESSIONAL LEARNING & INSTRUCTIONAL SUPPORT **EQUITY & EDUCATIONAL PROGRESS** **EXECUTIVE SERVICES**

Intended Audience – T: Teacher • A: Administrator • C: Coach • SS: Support Staff • G: Parent/Guardians • S: Students • P: Partners

INCLUSION COLLABORATIVE

Title or Topic	Description	Intended Audience	Grade Level	Contact	State Priorities
CCSS Alignment w/ Special Education - Math	Learn how to align grade-level Common Core math standards, instruction, and assessment to student IEP goals, including that of students with moderate/severe disabilities.	T, A, C	TK - 12	Inclusion Collaborative 408-453-6756 inclusion@sccoe.org	1, 2
CCSS Alignment with Special Education - ELD	Learn how to support English Learners with moderate/severe disabilities, including using the VCCALPS alternate assessment, reclassifying students using alternate assessment, English language development standards, and writing linguistically appropriate goals.	T, A, C	TK - 12	Inclusion Collaborative 408-453-6756 inclusion@sccoe.org	1, 2
CCSS Alignment with Special Education - NGSS	Learn how to align grade-level Next Generation Science Standards, instruction, and assessment to student IEP goals, including that of students with moderate/severe disabilities.	T, A, C	TK - 12	Inclusion Collaborative 408-453-6756 inclusion@sccoe.org	1, 2
Title 3 Reclassification for Special Ed - Utilizing Alternative ASessment	Receive support to design a district-wide reclassification process for students who are assessed with an alternate assessment to the ELPAC.	T, A, C	TK - 12	Inclusion Collaborative 408-453-6756 inclusion@sccoe.org	1, 2
Culturally Relevant & Culturally Sustaining Pedagogies	Learn to leverage, perpetuate, and foster the linguistic, literate, and cultural funds of knowledge students bring so that they may sustain and thrive in quality, inclusive school environments.	T, A, C	0 - 12 Grade	Inclusion Collaborative 408-453-6756 inclusion@sccoe.org	1, 2
Effective Co-Teaching Models & Practices	Come learn co-teaching models and when to use, strategies to promote co-teaching practices, co-teaching logistics, shared planning time, ideas for building relationships and strategies for working together as a team.	T, A, C	0 - 12 Grade	Inclusion Collaborative 408-453-6756 inclusion@sccoe.org	4, 5
Supporting Co-Teaching through Coaching	Learn through classroom observation and technical assistance some strategies for co-teaching in your specific environment.	T, A, C	0 - 12 Grade	Inclusion Collaborative 408-453-6756 inclusion@sccoe.org	4, 5
UDL: Associated Credential (CAST)	Participants will learn the importance of proactively designing for learner variability so ALL learners have the opportunity to succeed. This entry level credential is the perfect starting point on your UDL journey	T, A, C	0 - 12 Grade	Inclusion Collaborative 408-453-6756 inclusion@sccoe.org	1, 4
Exploring Science for Preschool Make & Take	Learn that exploring science supports critical thinking, problem solving, creativity, communication and social skills. Also learn how to adapt simple science activities for all children, including children with disabilities.	T, A, C	0 - 5 Years	Inclusion Collaborative 408-453-6756 inclusion@sccoe.org	1, 2

ACADEMICS

PL For updated information, go to sccoe.org/plportal


INCLUSION COLLABORATIVE

Title or Topic	Description	Intended Audience	Grade Level	Contact	State Priorities
Number Sense for Preschool Make & Take	Participants learn how to adapt practical strategies and classroom activities to support number sense for all children. Hands on training to create number sense tools.	T, A, C	0 - 5 Years	Inclusion Collaborative 408-453-6756 inclusion@sccoe.org	1, 2
Sign Language to Support Positive Behaviors Make & Take	Learn and practice simple sign language to support positive behaviors. Make practical visual adaptations that can be used with all children. Also practice using signs with songs.	T, A, C	0 - 8 Grade	Inclusion Collaborative 408-453-6756 inclusion@sccoe.org	1, 2
Social Stories to Support All Students Make & Take	Learn how social stories support all children taking daily events, expectations and routines and creating appropriate visuals. Hands on practice of writing social stories.	T, A, C	0 - 12 Grade	Inclusion Collaborative 408-453-6756 inclusion@sccoe.org	1, 2
Supporting Successful Meal Time Make & Take	Learn developmental stages in feeding for children, learn basic nutrition needs and sensory steps to eating. Understand the impact of the environment and how to implement strategies that can be used to support children during mealtime. Hands on making tools to support successful mealtimes.	T, A, C	0 - 3 Grade	Inclusion Collaborative 408-453-6756 inclusion@sccoe.org	1, 2
Visual Supports for Students with Autism Make & Take	Learn the implications for children with autism in school or home environments along with strategies that will support children with autism in various environments. Practice how to use visual supports for children with autism.	T, A, C	0 - 8 Grade	Inclusion Collaborative 408-453-6756 inclusion@sccoe.org	1, 2
Inclusion Learning Walks		T, A, C	0 - 12 Grade	Inclusion Collaborative 408-453-6756 inclusion@sccoe.org	1, 2
UDL Learning Walks		T, A, C	0 - 12 Grade	Inclusion Collaborative 408-453-6756 inclusion@sccoe.org	1, 2
Supporting Newcomers	Learn how schools can support Newcomers through: A Welcoming Environment, High Quality Academic Programs, Social Emotional Support with Support & Encouragement to engage in the education process.	T, A, C	K - 12	Inclusion Collaborative 408-453-6756 inclusion@sccoe.org	1, 2

PROFESSIONAL LEARNING & INSTRUCTIONAL SUPPORT **EQUITY & EDUCATIONAL PROGRESS** **EXECUTIVE SERVICES**

Intended Audience – T: Teacher • A: Administrator • C: Coach • SS: Support Staff • G: Parent/Guardians • S: Students • P: Partners

LEADERSHIP

For updated information, go to sccoe.org/plportal 

INNOVATION & INSTRUCTIONAL SUPPORT

Title or Topic	Description	Intended Audience	Grade Level	Contact	State Priorities
Learner Variability in the Mathematics and Technology Classroom	In alignment with the SCCOE principles this collaborative aims to engage participants in equitable and inclusive mathematics and technology practices; strengthen partnerships and collective leadership; and increase knowledge of current trends and research.	T, A, C	K - 12	Teri Brickley 408-453-6688 tbrickley@sccoe.org	1, 4, 5
Science Toolkit for Instructional Materials Evaluation (TIME) Process	This process for conducting a data driven, in depth review of K-12 NGSS Science Curriculum Materials was approved by the California Department of Education's (CDE). We can lead your team through the process, or train your leadership to do this work.	T, A, C	K - 12	Paula Leggett 408-453-6587 pleggett@sccoe.org	2, 3, 4, 7, 8

EDUCATIONAL TECHNOLOGY ONLINE BADGED COURSES

Title or Topic	Description	Intended Audience	Grade Level	Contact	State Priorities
Using Data to Support Learning: FERPA	How can educators be supported to use protected data that supports student learning in ways that comply with federal regulations?	T, A, C	K - 12	Craig Blackburn 408-453-6524 cblackburn@sccoe.org	2, 4, 5
Instructional Design for Instructional Coaches	How do we provide professional learning opportunities that feed teacher's passions, meets their goals, and positively affects student achievement with measurable results?	A, C	K - 12	Craig Blackburn 408-453-6524 cblackburn@sccoe.org	2, 4, 5
Using Social Media to Tell Your Story	How can administrators connect with teachers, parents and other stakeholders to share the great work that is taking place at their site.	A	K - 12	Craig Blackburn 408-453-6524 cblackburn@sccoe.org	2, 3, 4, 5

DISTRICT LCAP ADVISORY SERVICES

Title or Topic	Description	Intended Audience	Grade Level	Contact	State Priorities
Instructional Rounds	This training is a network approach to improving teaching and learning. Participants will learn how to conduct Instructional Rounds with a focus on evidence to help support improvement around a Problem of Practice at the site level.	T, A	TK - 12	Brenda Montes 408-453-4322 bmontes@sccoe.org	2, 4, 5, 6, 8
New Principal Support	Opportunity for principals that are new to the profession and/or new to the districts to have monthly meetings to discuss sites areas of focus, district areas of focus, learning the district's structures, and other areas based off need.	A	TK - 12	Brenda Montes 408-453-4322 bmontes@sccoe.org	1, 2, 3, 4, 5, 6, 7, 8

 PROFESSIONAL LEARNING & INSTRUCTIONAL SUPPORT

 EQUITY & EDUCATIONAL PROGRESS

 EXECUTIVE SERVICES

Intended Audience – T: Teacher • A: Administrator • C: Coach • SS: Support Staff • G: Parent/Guardians • S: Students • P: Partners

LEADERSHIP

PL For updated information, go to sccoe.org/plportal


DISTRICT LCAP ADVISORY SERVICES

Title or Topic	Description	Intended Audience	Grade Level	Contact	State Priorities
Continuous Improvement To Support Site Leaders	Site leaders will learn how to use Continuous Improvement tools to identify a problem of practice, determine root causes, come up with change ideas, map out a theory of improvement, and test these ideas to determine their effectiveness. This process helps principals write effective site level plans.	A	K - 12	Mayra Ayala 408-453-6529 mayala@sccoe.org	1, 2, 3, 4, 5, 6, 7, 8
Dashboard 101 Training	This professional learning for administrators and teacher leaders covers the CA School Dashboard purpose, navigation, the methodologies of the indicators, additional reports navigation, and data exploration activities.	T, A	K - 12	Jessica Taylor 408-453-6320 jtaylor@sccoe.org	1, 2, 3, 4, 5, 6, 7, 8
Smarter Balanced Interim Assessments Workshop	This professional learning for administrators and teacher leaders covers an overview of the Smarter Balanced Interim Assessments; the structure of interim assessment student rostering; using interim assessments to support student learning; and navigating the Interim Assessment Reporting System.	T, A	K - 12	Jessica Taylor 408-453-6320 jtaylor@sccoe.org	4, 8
New ELPAC Coordinator Workshop	The New ELPAC Coordinator Training is designed for LEA ELPAC coordinators who are new to their role. The training will explore procedures and practices to support a successful ELPAC administration as well as review the new computer based components and procedures of the assessment.	SS	K - 12	Jessica Taylor 408-453-6320 jtaylor@sccoe.org	4
New CAASPP Coordinator Workshop	The New CAASPP Coordinator Training is a voluntary training session designed for LEA CAASPP coordinators who are new to their role. This training will explore the final preparations for administration of the CAASPP summative assessments.	SS	K - 12	Jessica Taylor 408-453-6320 jtaylor@sccoe.org	4
Pre Test (CAASPP, ELPAC) Workshop	The goal of the CAASPP and ELPAC Pretest Workshop is to provide attendees information needed to successfully prepare for and administer the Smarter Balanced Summative Assessments, the CAST, the CAAs, the CSA, and the Initial and Summative ELPAC.	SS	K - 12	Jessica Taylor 408-453-6320 jtaylor@sccoe.org	4
CAASPP The Results Are In—Now What?	This workshop will focus on how a data analysis protocol can support a discussion about programs, policies, and practices that can inform actions to improve teaching and learning.	T, SS	K - 12	Jessica Taylor 408-453-6320 jtaylor@sccoe.org	4
Data Visualization Training	Learn best practices to effectively display the data that you display to various audiences.	A	K - 12	Jessica Taylor 408-453-6320 jtaylor@sccoe.org	1, 2, 3, 4, 5, 6, 7, 8
School Site Council Training	Overview of the roles and responsibilities of School Site Council which meets annual training requirements.	A, G	All	Dawn River, EdD 408-453-6899 driver@sccoe.org	3, 6

PROFESSIONAL LEARNING & INSTRUCTIONAL SUPPORT **EQUITY & EDUCATIONAL PROGRESS** **EXECUTIVE SERVICES**

Intended Audience – T: Teacher • A: Administrator • C: Coach • SS: Support Staff • G: Parent/Guardians • S: Students • P: Partners

LEADERSHIP

For updated information, go to sccoe.org/plportal 

DISTRICT LCAP ADVISORY SERVICES

Title or Topic	Description	Intended Audience	Grade Level	Contact	State Priorities
District English Learner Advisory Committee (DELAC)/ELAC Training	Overview of the roles and responsibilities of DELAC which meets annual training requirements.	A, G	All	Dawn River, EdD 408-453-6899 driver@sccoe.org	3, 6
School Plan for Student Achievement (SPSA) Training	Workshop to address the development, stakeholder engagement, approval and annual evaluation of the School Plan.	A	All	Dawn River, EdD 408-453-6899 driver@sccoe.org	3, 6
Equitable Services for Private Schools	Workshop to address the federal guidelines for Equitable Services with Federal Title Grants to Non-Profit Private Schools for School Districts.	A	All	Dawn River, EdD 408-453-6899 driver@sccoe.org	3, 6
Preparing for Federal Program Monitoring (FPM)	Workshop/Network to support districts to prepare for Federal Program Monitoring (Online or Onsite) by CDE. Participants will evaluate their policies, procedures and systems to meet the requirements of the federal grants they receive and the documentation required in the CDE Program Instruments.	A	All	Dawn River, EdD 408-453-6899 driver@sccoe.org	3, 6

INCLUSION COLLABORATIVE

Title or Topic	Description	Intended Audience	Grade Level	Contact	State Priorities
Facilitating Equity-based Inquiry	Engage in a process of self-reflective study of educators' teaching practices to improve teaching practices and supports for more equitable achievement of all students.	T, A	All	Inclusion Collaborative 408-453-6756 inclusion@sccoe.org	4, 6
Legally-Compliant IEPs	Learn to write a legally compliant IEP to provide a free and appropriate education (FAPE) and to use SEIS and/or SIRAS IEP Management Systems.	T, A, C	PK - 12	Inclusion Collaborative 408-453-6756 inclusion@sccoe.org	1, 2
Administrative Inclusion Support and Coaching	Provides strategies and assistance for school leaders to support and facilitate inclusive educational practices on their school site.	A, C	All	Inclusion Collaborative 408-453-6756 inclusion@sccoe.org	4, 5



 PROFESSIONAL LEARNING & INSTRUCTIONAL SUPPORT

 EQUITY & EDUCATIONAL PROGRESS

 EXECUTIVE SERVICES

Intended Audience – T: Teacher • A: Administrator • C: Coach • SS: Support Staff • G: Parent/Guardians • S: Students • P: Partners

BEHAVIOR

PL For updated information, go to sccoe.org/plportal

SAFE & HEALTHY SCHOOLS

Title or Topic	Description	Intended Audience	Grade Level	Contact	State Priorities
Vaping & Marijuana 101 for Educators, Families, and Community Members	Join us for answers to questions about vaping and marijuana. We will discuss how to prevent vaping before it starts, how you can help a teen who is vaping, and how to have a conversation with a teen about vaping.	T, G, P	K - 12	Sonia Gutierrez 408-453-6762 sgutierrez@sccoe.org	3, 5, 6
Brief Intervention Training	Brief intervention is an approach that uses motivational interviewing, cognitive behavioral therapy, and the stages of change model to meet the needs of adolescents who use alcohol and/or other drugs.	A, SS	6 - 12	Sonia Gutierrez 408-453-6762 sgutierrez@sccoe.org	5, 6
Peer Advocate Training	One day training for peer advocates from various high schools to learn how to teach the Stanford Tobacco Toolkit to their peers.	S	6 - 12	Sonia Gutierrez 408-453-6762 sgutierrez@sccoe.org	5, 6
Sexual Health Educator Trainings	The Sexual Health Educator (SHE) Custom Training program is for educators in school, community, and clinic settings who want to build their knowledge and capacity in sexual health and sexuality education.	SS	6 - 12	Natalie Andrade 408-453-6530 nandrade@sccoe.org	5, 6
Stanford Tobacco & Marijuana Prevention Toolkit	The Tobacco and Marijuana Prevention Toolkits are theory-based and evidence-informed curricula aimed at preventing students' use of tobacco/nicotine, and marijuana. During this training attendees will learn how to navigate and use the Toolkit to teach the curricula at their schools.	T, SS	6 - 12	Sonia Gutierrez 408-453-6762 sgutierrez@sccoe.org	5, 6
ASIST	LivingWorks ASIST teaches trainees to provide a skilled intervention and develop a collaborative safety plan to keep someone safe and alive. Trusted by professionals yet learnable by anyone, LivingWorks ASIST is the world's leading suicide intervention model.	T, A, SS, P	K - 12	Brenda Arroyo 408-453-6504 barroyo@sccoe.org	5, 6

INCLUSION COLLABORATIVE

Title or Topic	Description	Intended Audience	Grade Level	Contact	State Priorities
Behavior is Communication	Designed for professionals working with children in classroom. Focus is inclusive practices, effective communication strategies, promoting reflective practice, team goals and next steps to support their inclusive program, and learning environments.	T, P	0 - 12 Grade	Inclusion Collaborative 408-453-6756 inclusion@sccoe.org	1, 5, 8

PROFESSIONAL LEARNING & INSTRUCTIONAL SUPPORT

EQUITY & EDUCATIONAL PROGRESS

EXECUTIVE SERVICES

Intended Audience – T: Teacher • A: Administrator • C: Coach • SS: Support Staff • G: Parent/Guardians • S: Students • P: Partners

SOCIAL EMOTIONAL

For updated information, go to sccoe.org/plportal 

INNOVATION & INSTRUCTIONAL SUPPORT

Title or Topic	Description	Intended Audience	Grade Level	Contact	State Priorities
Culturally Responsive Teaching: Mathematical Identity	The series will engage educators with inquiry-based learning to develop and foster teachers' understanding of how students' cultural, linguistic, ethnic, racial, gender and socioeconomic background influence their learning of math and, particularly, the role of math in society and culture.	T, A, C	K - 10	Teri Brickey 408-453-6688 tbrickley@sccoe.org	1, 2, 4, 5, 6
Social Emotional Learning: Mathematical Identity	Join dialogues and discussions on cultivating a caring, participatory, and equitable mathematics learning environment through the Social Emotional Learning (SEL) framework. A systemic approach to SEL creates a climate and culture that fosters the joy of mathematics learning.	T, A, C	K - 10	Teri Brickey 408-453-6688 tbrickley@sccoe.org	1, 2, 4, 5, 6
Developing Equitable Teaching Strategies that Increase Engagement for All Students. Presented by HHMI	This is a cross discipline workshop focusing on "All Standards for All Students." Participants will learn how to create equitable classrooms by engaging students in group worthy tasks with the goal of changing classroom status.	T, A, C, SS	9 - 12	Paula Leggett 408-453-6587 pleggett@sccoe.org	1, 2, 3, 4
Preparing for Federal Program Monitoring (FPM)	Workshop/Network to support districts to prepare for Federal Program Monitoring (Online or Onsite) by CDE. Participants will evaluate their policies, procedures and systems to meet the requirements of the federal grants they receive and the documentation required in the CDE Program Instruments.	A	All	Dawn River, EdD 408-453-6899 driver@sccoe.org	3, 6

SAFE & HEALTHY SCHOOLS

Title or Topic	Description	Intended Audience	Grade Level	Contact	State Priorities
Suicide to Hope	Once someone is safe after a suicide crisis, what's next? LivingWorks suicide to Hope provides skills any professional can use to help them work through their lingering thoughts of suicide and attain a higher quality of life.			Brenda Arroyo 408-453-6504 barroyo@sccoe.org	5, 6
Youth Mental Health First Aid Training (YMHFA)	Understand risk factors and warning signs for common mental health challenges, review typical adolescent development and learn a 5-step mental health action plan to help youth in both crisis and non-crisis situations.			Brenda Arroyo 408-453-6504 barroyo@sccoe.org	5, 6

SOCIAL EMOTIONAL

PL For updated information, go to sccoe.org/plportal

EDUCATIONAL TECHNOLOGY & LEADERSHIP

Title or Topic	Description	Intended Audience	Grade Level	Contact	State Priorities
Culturally Responsive Pedagogies	How are you harnessing and developing your cultural proficiency to empower all learners? How are you designing learning and teaching to break patterns of inequity?	T, A, C	K - 12	Craig Blackburn 408-453-6524 cblackburn@sccoe.org	2, 4, 5, 6
Introduction to Social Emotional Learning	How can students develop Social Emotional Learning skills to positively impact learning?	T, A, C	K - 12	Craig Blackburn 408-453-6524 cblackburn@sccoe.org	2, 4, 5, 6

INCLUSION COLLABORATIVE


Title or Topic	Description	Intended Audience	Grade Level	Contact	State Priorities
Family Supports for Positive Behavior	Participants explore foundations of social emotional development needed for self-regulation and problem-solving and learned strategies to support children's positive behaviors.	G	Birth - 5 years	Inclusion Collaborative 408-453-6756 inclusion@sccoe.org	3, 8
CSEFEL Teaching Pyramid Positive Behavior Support	In this training you will learn positive feedback & encouragement, building relationships to promote success, designing environments and schedules, intentionally teaching social/emotional skills, determine the meaning and function of challenging behavior - develop a plan and prevention strategies.	T, A, C	Birth - 3 Grade	Inclusion Collaborative 408-453-6756 inclusion@sccoe.org	2, 6
Supporting a Culture of Welcoming and Belonging	This training will increase your understanding of Inclusion and Inclusive Practices, describe the benefits of inclusion for all children and their families. It will also provide a framework for building a culture of welcoming and belonging.	T, A, C	Birth - 12 Grade	Inclusion Collaborative 408-453-6756 inclusion@sccoe.org	2, 6
Teaching Self Regulation using The Calming Kit	Learn how to regulate one's thinking, emotions, and behavior. Young children who engage in intentional self-regulation learn more and are more successful in their education. Intentional self-regulation predicts school success.	T, A, C	Birth - 12 Grade	Inclusion Collaborative 408-453-6756 inclusion@sccoe.org	1, 4



PROFESSIONAL LEARNING & INSTRUCTIONAL SUPPORT **EQUITY & EDUCATIONAL PROGRESS** **EXECUTIVE SERVICES**

Intended Audience – T: Teacher • A: Administrator • C: Coach • SS: Support Staff • G: Parent/Guardians • S: Students • P: Partners

SYSTEMS: SCHOOL CLIMATE & INFRASTRUCTURE

For updated information, go to sccoe.org/plportal 

INNOVATION & INSTRUCTIONAL SUPPORT

Title or Topic	Description	Intended Audience	Grade Level	Contact	State Priorities
Disrupting Inequity: Having Brave Conversations About Bias	Equity calls us to action on the commitment to disrupt patterns of implicit bias in ourselves, our organization, and in the education field to contribute to equitable outcomes for all students. The sessions lead to brave conversations in school communities so we can listen, lead and teach equitably.	T, A, C	K - 16	Teri Brickey 408-453-6688 tbrickley@sccoe.org	1, 2, 4, 5, 6
Science in the City Book Study	This blended (online and in person) book study will allow for participants to read and discuss Science in the City and its implications for science instruction.	T, A, C	TK - 12	Paula Leggett 408-453-6587 pleggett@sccoe.org	2, 4, 5

SAFE & HEALTHY SCHOOLS

Title or Topic	Description	Intended Audience	Grade Level	Contact	State Priorities
PBIS Training	Positive Behavioral Interventions and Supports (PBIS) is an evidence-based, data-driven tiered framework that improves and integrates systems and practices that support student outcomes.			Brenda Arroyo 408-453-6504 barroyo@sccoe.org	1, 2, 4, 5, 6
California Healthy Kids Survey (CHKS) Workshop	Join our three-hour, on-site workshop as we will walk-through of everything needed to know to administer the CalSCHLSsurveys and to use the CalSCHLSdata for LCAP, MTSS, and school climate improvement. This two part training will include both an Administration Overview and a Data Workshop.	A, SS	TK - 12	Sonia Gutierrez 408-453-6762 sgutierrez@sccoe.org	1, 2, 4, 5, 6
Nuts and Bolts: A Shift from Truancy to Chronic Absenteeism	The Santa Clara County District Attorney's Office will provide an overview of Student Attendance, Truancy vs Chronic Absenteeism, Santa Clara County - Recommended SARB Process, Levels of Interventions, Summ. Law and DA Mediations.			Brenda Arroyo 408-453-6504 barroyo@sccoe.org	1, 2, 4, 5, 6
School Safety Planning Workshop	A School safety planning workshop designed to support district teams to develop and maintain a comprehensive school safety plan. This workshop supports school safety plan teams who have been tasked with meeting mandates in Education Code 32280-32289 (SB 187)			Brenda Arroyo 408-453-6504 barroyo@sccoe.org	1, 2, 4, 5, 6

 PROFESSIONAL LEARNING & INSTRUCTIONAL SUPPORT

 EQUITY & EDUCATIONAL PROGRESS

 EXECUTIVE SERVICES

Intended Audience – T: Teacher • A: Administrator • C: Coach • SS: Support Staff • G: Parent/Guardians • S: Students • P: Partners

SYSTEMS: SCHOOL CLIMATE & INFRASTRUCTURE

PL For updated information, go to sccoe.org/plportal


DIFFERENTIATED ASSISTANCE & INSTRUCTIONAL SUPPORT

Title or Topic	Description	Intended Audience	Grade Level	Contact	II
Action Research for Educators	Use action research to make positive change for equity, blending theory and action to create responses to issues of pressing concern - racial equity in your school. Process involves selecting a focus, identifying research questions, collecting/analyzing data, sharing results and taking action.			Mayra Ayala 408-453-6529 mayala@sccoe.org	1,2,4,5,6
Plan, Do, Study, Act	Experience a continuous improvement cycle known as the Plan, Do, Study, Act. Identify and work through a problem of practice, identify ideas to address it, run tests, collect data, and create next steps based on findings. Be ready to apply what you learn to your teaching context.			Mayra Ayala 408-453-6529 mayala@sccoe.org	1,2,4,5,6
MTSS Overview	At this introductory workshop, participants will learn how Multi-Tiered System of Supports (MTSS) supports an aligned system of evidence-based instruction, intervention, enrichment, and assessment practices in both academics and behavior that aims to provide every student what they need to succeed.	T, A, C, SS, G		Jessica Taylor 408-453-6520 jtaylor@sccoe.org	1, 2, 3, 4, 5, 6, 7, 8
MTSS for District Leadership Teams	This series is intended to build the capacity of district leadership teams with the tools they will need to begin the process of implementing MTSS in their districts. These sessions will focus on integrating academic and behavior systems with a focus on the integration of teams, data, and practices.	A, C		Jessica Taylor 408-453-6520 jtaylor@sccoe.org	1, 2, 3, 4, 5, 6, 7, 8
MTSS Bootcamp	Join us for 1 day MTSS essentials workshop designed for district and site leaders who are new to MTSS or would like a refresher course. We will review the pillars of the MTSS framework, including the structures, data, and effective practices needed to sustain MTSS within your system.		All	Jessica Taylor 408-453-6520 jtaylor@sccoe.org	1, 2, 3, 4, 5, 6, 7, 8
Data Literacy for Educators	This series explores the use of formative assessment in the daily instructional cycle. Topics covered will include use, collection and display of formative assessment as well as how to utilize Smarter Balanced blueprints to improve teaching and learning in the classroom.	T, A	K - 12	Deann Walsh dwalsh@sccoe.org	4,8

PROFESSIONAL LEARNING & INSTRUCTIONAL SUPPORT **EQUITY & EDUCATIONAL PROGRESS** **EXECUTIVE SERVICES**

Intended Audience – T: Teacher • A: Administrator • C: Coach • SS: Support Staff • G: Parent/Guardians • S: Students • P: Partners

SYSTEMS: SCHOOL CLIMATE & INFRASTRUCTURE

For updated information, go to sccoe.org/plportal 

DISTRICT LCAP ADVISORY SERVICES

Title or Topic	Description	Intended Audience	Grade Level	Contact	State Priorities
CSI/TSI/ATSI Training	This training is intended for districts that have schools that have been identified for CSI/TSI/ATSI to learn what the identification means and the guidelines required LCAP and SPSA.	A	K - 12	Brenda Montes 408-453-4322 bmontes@sccoe.org	2, 4, 8
LCAP 101	This training is designed for new LCAP team members or those who would like a refresher. Important timelines and elements of the LCAP will be discussed.	A		Mayra Ayala 408-453-6529 mayala@sccoe.org	1, 2, 3, 4, 5, 6, 7, 8
LCAP Writing Sessions	LCAP Writing Sessions are designed for LCAP writers and teams. Each session will start with a review of the LCAP template requirements and will then focus in on a specific section. Time will be devoted to writing and making progress on drafting your LCAP.	A, SS	K - 12	Mayra Ayala 408-453-6529 mayala@sccoe.org	1, 2, 3, 4, 5, 6, 7, 8
Introduction to Improvement Science	This 4 day training is designed for district and site leaders who are interested in learning more about how to lead a process and structure for improvement. Attendees will about Improvement Science tools to build an organization that is constantly learning and improving.	A	K - 12	Mayra Ayala 408-453-6529 mayala@sccoe.org	1, 2, 3, 4, 5, 6, 7, 8

INCLUSION COLLABORATIVE

Title or Topic	Description	Intended Audience	Grade Level	Contact	State Priorities
Inclusion 101: Building the Inclusive School	Come learn what inclusion is and isn't, benefits for all children and their families. Learn about the Inclusive School House Model (Administrative Leadership & Support, Collaborative Planning & Problem Solving, MTSS with RTI & SWPBS, Co-Teaching and Differentiated Instruction).	T, A	Birth - 12 Grade	Inclusion Collaborative 408-453-6756 inclusion@sccoe.org	4, 5
Inclusion: Supporting Early Learning		T, A	Birth - 5 Grade	Inclusion Collaborative 408-453-6756 inclusion@sccoe.org	4, 5
Inclusion: Supporting Elementary Age		T, A	1 - 5	Inclusion Collaborative 408-453-6756 inclusion@sccoe.org	4, 5
Inclusion: Supporting Middle School		T, A	6 - 8	Inclusion Collaborative 408-453-6756 inclusion@sccoe.org	4, 5

 PROFESSIONAL LEARNING & INSTRUCTIONAL SUPPORT

 EQUITY & EDUCATIONAL PROGRESS

 EXECUTIVE SERVICES

Intended Audience – T: Teacher • A: Administrator • C: Coach • SS: Support Staff • G: Parent/Guardians • S: Students • P: Partners

SYSTEMS: SCHOOL CLIMATE & INFRASTRUCTURE

PL For updated information, go to sccoe.org/plportal

INCLUSION COLLABORATIVE

Title or Topic	Description	Intended Audience	Grade Level	Contact	State Priorities
Inclusion: Supporting High School		T, A	9 - 12	Inclusion Collaborative 408-453-6756 inclusion@sccoe.org	4, 5
Inclusive Classroom Profile	Learn how to use the Inclusive Classroom Profile, a structured observation rating scale designed to assess the quality of daily classroom practice that support developmental needs of children with disabilities in early childhood settings.	T, A	Birth - 5 Years	Inclusion Collaborative 408-453-6756 inclusion@sccoe.org	4, 5
PLC: Facilitated Group Cycles of Inquiry for Positive Student Outcomes	Engage in an ongoing process of recurring cycles of collective inquiry, action research, and embedded professional learning to achieve better results for all students.	T, A, C	K - 12	Inclusion Collaborative 408-453-6756 inclusion@sccoe.org	4, 8
Reflective Practice to Support Inclusion	Participants will learn how to reflect on their classroom practices, develop a support network, learn more about visual supports, intentionally plan for variable learners, design environments and schedules.	T, A, C	Birth - 12 Grade	Inclusion Collaborative 408-453-6756 inclusion@sccoe.org	1, 6
Facilitating Successful Transitions with Technology Make & Take	Gain a deeper understanding of why challenging behaviors occur around transitions and create individualized supports to use with your students. Learn to use technology to support and manage transitions.	T, A, C	Birth - 5 Years	Inclusion Collaborative 408-453-6756 inclusion@sccoe.org	1, 2
Sensory Support for Inclusive Practices Make & Take	Gain understanding of different types of sensory challenges that impact a child's participation in daily activities. Identify sensory-seeking and sensory-avoidance behaviors and how they impact self regulation, attention span and ability to learn.	T, A, C	Birth - 12 Grade	Inclusion Collaborative 408-453-6756 inclusion@sccoe.org	1, 2

DATA GOVERNANCE

Title or Topic	Description	Intended Audience	Grade Level	Contact	State Priorities
DataZone Implementation Services	This planning session is designed for a District's DataZone Implementation Team to collaboratively plan for their DataZone implementation.	A, SS	K - 12	Nabil Shahin 408-453-4299 nshahin@sccoe.org	4, 5, 6, 7, 8
DataZone 101 Training	Learn how DataZone's dashboards can support your understanding of student, school and district progress.	T, A, C	K - 12	Nabil Shahin 408-453-4299 nshahin@sccoe.org	4, 5, 6, 7, 8


PROFESSIONAL LEARNING & INSTRUCTIONAL SUPPORT

EQUITY & EDUCATIONAL PROGRESS

EXECUTIVE SERVICES

Intended Audience – T: Teacher • A: Administrator • C: Coach • SS: Support Staff • G: Parent/Guardians • S: Students • P: Partners

FAMILY & COMMUNITY

For updated information, go to sccoe.org/plportal 

MULTILINGUAL AND HUMANITIES EDUCATION

Title or Topic	Description	Intended Audience	Grade Level	Contact	State Priorities
Parent Leadership TOT (Elementary)	A Trainer of Trainers designed to equip parent leaders and school administrators on the content of the Elementary Parenting Workshop series and the Common Core support activities so that they can lead it in their own school sites.	T, G	TK - 5	Jhun Madriaga 408-453-4318 jmadriaga@sccoe.org	2
Parent Leadership TOT (Secondary)	A Trainer of Trainers designed to equip parent leaders and school administrators on the content of the Secondary Parenting Workshop series and the Common Core support activities so that they can lead it in their own school sites.	T, G	6 - 12	Jhun Madriaga 408-453-4318 jmadriaga@sccoe.org	2
Parent Leadership TOT Refresh (Elementary & Secondary)	A reunion for parent leaders who have previously completed the TOT in order to learn from others' experiences and gain new insights for leading parent workshops at their school sites.	G	TK - 12	Jhun Madriaga 408-453-4318 jmadriaga@sccoe.org	2
Parent Project Junior with Common Core for Grades K-5	A 6-week workshop for parents of TK-5th grade students. Using a culturally sensitive manner, this interactive series combines parenting strategies with Common Core activities so that parents may understand how to support your child's growth and learning.	G	K - 5	Jhun Madriaga 408-453-4318 jmadriaga@sccoe.org	2
Active Parenting with Common Core for Grades 6-12	A 6-week workshop for parents of preadolescents and adolescents in grades 6th-12th. In an interactive environment, parents learn about the developmental needs of adolescents, effective communication and other strategies to help their teens develop into responsible and courageous adults.	G	6 - 12	Jhun Madriaga 408-453-4318 jmadriaga@sccoe.org	2
Families Learning Together	To promote learning together, the Parent Engagement Initiative empowers parent leaders to organize and plan a learning event and present CCSS content-rich workshops. The Fall 2019 "Everybody Counts" will incorporate math activities to show why collecting data during Census 2020 is important.	S, G	TK - 12	Jhun Madriaga 408-453-4318 jmadriaga@sccoe.org	2


EDUCATIONAL TECHNOLOGY & LEADERSHIP

Title or Topic	Description	Intended Audience	Grade Level	Contact	State Priorities
Engage, Educate & Empower: Digital Citizenship, Your Child & You	Parents are looking for resources to better understand how to oversee and manage their children's digital content, and guide their children into making smart ethical choices while online. Parents will gain a better understanding of the value and potential hazards associated with digital access.	G	K - 12	Craig Blackburn 408-453-6524 cblackburn@sccoe.org	3, 4, 5, 6

 PROFESSIONAL LEARNING & INSTRUCTIONAL SUPPORT  EQUITY & EDUCATIONAL PROGRESS  EXECUTIVE SERVICES

Intended Audience – T: Teacher • A: Administrator • C: Coach • SS: Support Staff • G: Parent/Guardians • S: Students • P: Partners

LPC & SELPA

 For updated information, go to sccoe.org/plportal

LOCAL EARLY EDUCATION PLANNING COUNCIL (LPC)

Title or Topic	Contact
Inclusion: Overview of Inclusion and Disability Awareness	Giang Le 408-453-4331 gle@sccoe.org
Program For Infants and Toddlers (PITC): Early Brain Development	
Program For Infants and Toddlers (PITC): Social Emotional Development	
Inclusion: Overview of Autism	
Inclusion: Teaching Self-Regulation (Calming Kit)	
Program For Infants and Toddlers (PITC): Supporting Language Development	
Inclusion: Make and Take Session	
Program For Infants and Toddlers (PITC): Environment	
Trauma Informed Practices in Early Childhood Education (TIP-ECE): 100- An Overview of Trauma	
Trauma Informed Practices in Early Childhood Education (TIP-ECE): 200- Supporting TIP Curriculum	

SPECIAL EDUCATION LOCAL PLAN AREA (SELPA)

Title or Topic	Contact
Universal Design for Learning	Leo Mapagu 408-453-6566 lmapagu@sccoe.org
Special Education Legal Panel	
Disproportionality Training	
Transitions	
Suspensions	
English Learners with Special Needs	
Facilitated IEPs/ Alternative Dispute Resolution	
Special Education Assessments	
Socio-Emotional Learning	
Speech & Language	
Academic Instruction	

 PROFESSIONAL LEARNING & INSTRUCTIONAL SUPPORT  EQUITY & EDUCATIONAL PROGRESS  EXECUTIVE SERVICES

Intended Audience – T: Teacher • A: Administrator • C: Coach • SS: Support Staff • G: Parent/Guardians • S: Students • P: Partners



2020 **PROFESSIONAL LEARNING CATALOG**

SANTA CLARA COUNTY BOARD OF EDUCATION

Joseph Di Salvo • Rosemary Kamei • Kathleen King • Grace Mah
Peter Ortiz • Claudia Rossi • Anna Song



1290 Ridder Park Drive, San Jose, CA 95131

www.sccoe.org