

Early Childhood Special Education credential preliminary program

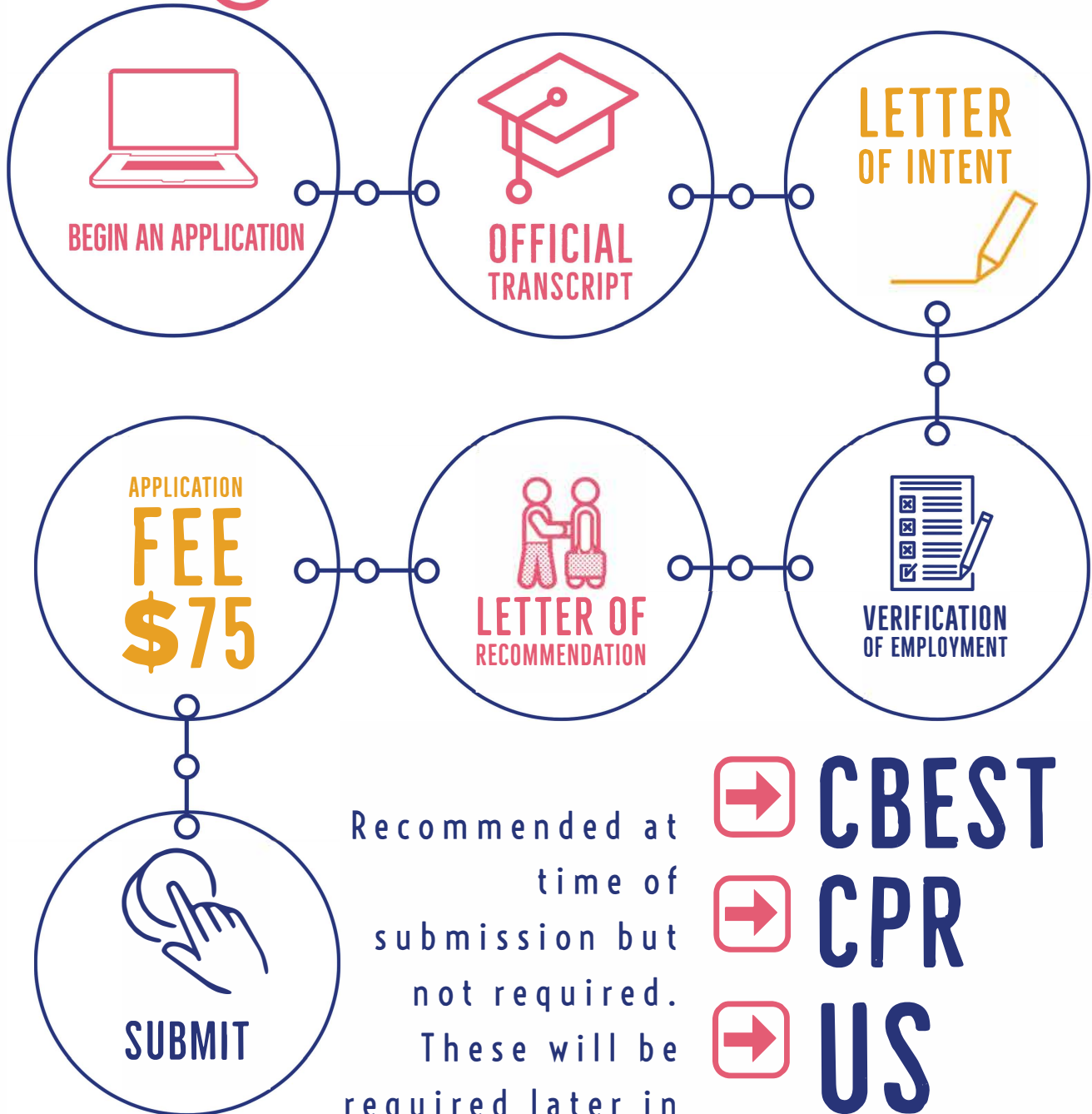
APPLICATION REQUIREMENTS

START HERE



FOR APPLICANTS EARNING THEIR FIRST
TEACHING CREDENTIAL

CLICK ON THE ICONS FOR
COMPLETE DETAILS



Recommended at
time of
submission but
not required.
These will be
required later in
the program

 **CBEST**

 **CPR**

 **US**
CONSTITUTION