

Head Start and Early Head Start Annual Report 2022-23

Enriching the Lives of Children





Head Start/Early Head Start

HeadStart

My name is

Antonio Fuentes

Director,
Early Learning
Services



I am proud to share with you our Annual Report for 2022-23. It captures our activities and accomplishments that support a child's learning for school readiness and a lifetime of academic success.

This report highlights the great work of our Head Start and Early Head Start staff and what they are doing for children and families in Santa Clara and San Benito Counties. Please visit us at www.myheadstart.org.

Our Mission

To serve and act on behalf of the welfare of all young children. We will foster every child's inherent physical, social-emotional, linguistic, cultural, creative, and academic potential.

Our Vision

Every day we embrace each child's wonder and curiosity, and with our partners, engage all children in rich, diverse opportunities to ensure they reach their greatest potential in life, thereby creating socially equitable opportunities for all.

Our Values

- A Child's Natural Curiosity
- A Teacher's Understanding that Each Child is Unique
- Cultural Competency of our Staff
- Families' Moral & Cultural Value System
- Parents and Staff Working Together
- A Foundation for Lifelong Learning





What We Do

Our Services

- Health, Dental, and Medical Services
- On-Going Professional Development
- Nutrition Awareness and Practices
- Mental Health and Disabilities Services
- A Quality Educational Environment
- Family Engagement and Advocacy

Purpose

The purpose of the Head Start Program is to “break the cycle of poverty, providing preschool children of low-income families with a comprehensive program to meet their emotional, social, health, nutritional and psychological needs.”
– The Office of the Administration for Children & Families

Community Assessment

Our Community Assessment Report describes the context in which our program operates and is useful for ensuring that the correct services are provided to the appropriate population. It provides an evaluation of the needs and resources available to low-income families and priority child populations residing in the Santa Clara County Office of Education’s service area.

The Community Assessment Report can be found at www.myheadstart.org.

Serving Children with Partners

Partnering with childcare creates continuity of care from infancy to Prekindergarten. Our partners served 655 children in program year 2022-23.

Head Start	Center-Based	Home-Based	Family Child Care Provider	Total
Directly Operated by SCCOE	1088	0	0	1088
SCCOE Partner Agencies	602	0	0	602
Total Head Start	1690	0	0	1690

Early Head Start	Center-Based	Home-Based	Family Child Care Provider	Total
Directly Operated by SCCOE	16	174	126	316
SCCOE Partner Agencies	182	0	0	182
Total Early Head Start	198	174	126	498

Head Start & Early Head Start Grand Total	1888	174	126	2188
--	-------------	------------	------------	-------------





Eligible Children Served

Population Characteristics	San Benito County	Santa Clara County
2021 Population Estimate, as of July 1, 2021	63,329	1,932,022
% 2021 Population under 5	6.50%	5.70%
All Persons living in poverty	7.70%	6.70%
% Families living below Poverty Level	5.90%	4.00%
% Children under 5 below Poverty Level	11.00%	5.30%

As of 2021, our service area includes a total population of 1,932,022 residents in Santa Clara County and 63,329 residents in San Benito County for a service area total of 1,995,351 population.

Our Head Start Program served 19.3% of the eligible preschool children in Santa Clara County and 20.2% of the eligible preschool children in San Benito County during the

2022-23 program year. This was equivalent to a total of 27.2% for both counties.

Our Early Head Start Program served 2.3% of eligible preschool children in Santa Clara County and 5.5% of eligible preschool children in San Benito County during the 2022-23 program year. The totals for both counties added up to be 2.5%.

Our Children



Funded Enrollment

1,690 Head Start
489 Early Head Start
2,188 Total

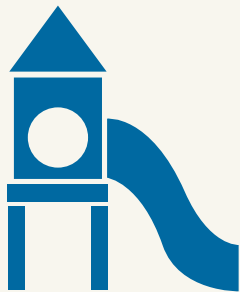
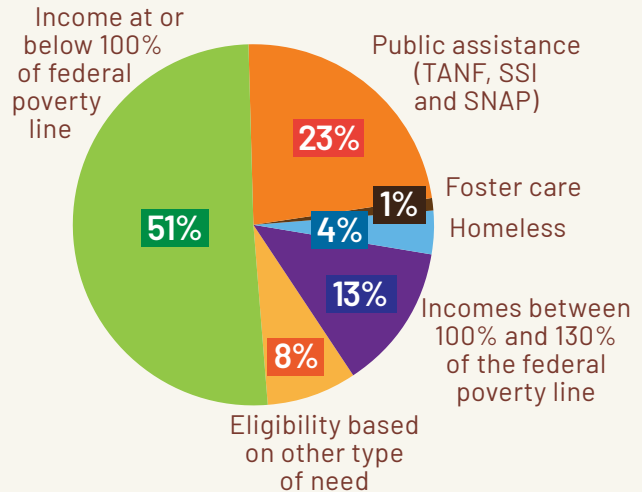
Cumulative Enrollment

1,062 Head Start
272 Early Head Start
1,334 Total

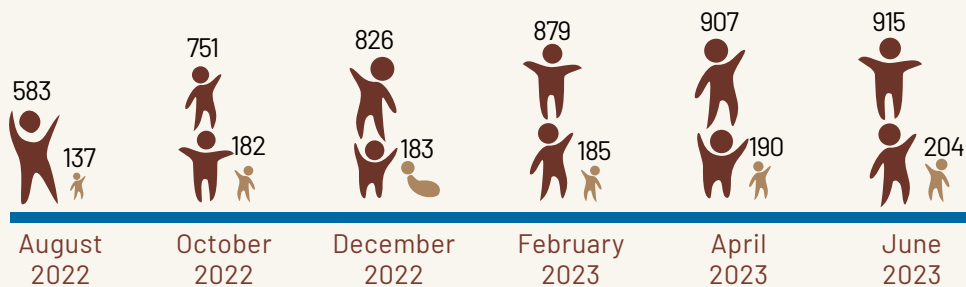
Head Start

Early
Head Start

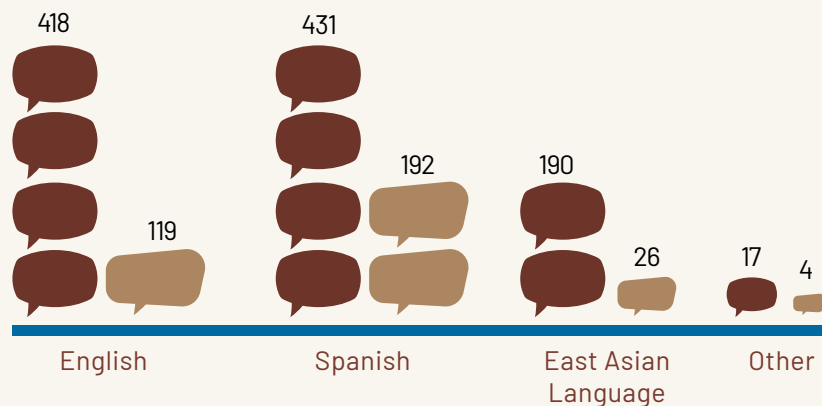
Our Eligibility



Average Monthly Attendance



Languages Spoken at Home



Our Families

Head Start

1,012 Families



378 Two-parent families



634 Single-parent families

Early Head Start

320 Families



73 Two-Parent families



247 Single-Parent families

Total Families



34%
Two-Parent Families



66%
Single Parent Families

Services Families Recieve



84% of families in Head Start and Early Head Start received at least one service during 2022-23

Health
Education
53%



Parenting
Education
26%



Emergency/
Crisis Intervention
36%



Other
Services
71%



64%



56%



38%



47%

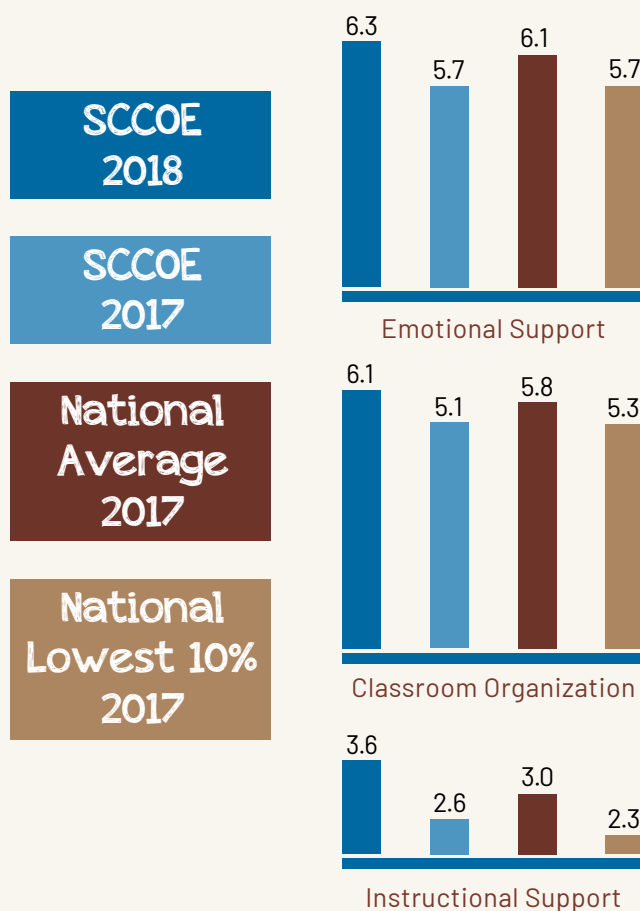


High Quality Education

Our goal is to provide children with an educational experience that will give them the skills and confidence necessary to be prepared to succeed today and serve as a foundation for success in kindergarten and beyond. We build the capacity within our staff to create and deliver a high-quality educational experience as well as creating monitoring systems geared towards continuous quality improvement.

CLASS Observations

The Classroom Assessment Scoring System (CLASS) is an observation instrument that assesses the quality of teacher-child interactions in center-based preschool classrooms. CLASS includes three domains or categories of teacher-child interactions that support children's learning and development: Emotional Support, Classroom Organization, and Instructional Support. Within each domain are dimensions that capture more specific details about teachers' interactions with children.



Family Services

Family Engagement

- Parents are Part of Our Programs
- The Key to Healthy Child Development
- A Lifetime of Academic Success
- Involved in their Child's Education
- Families are Encouraged to Engage
- Volunteer in the Classroom
- Participate in Goal-Setting Opportunities
- Attend Parent Meetings
- Be Part of the Decision Making

Health Services

Our programs emphasize the importance of early identification of health or mental health needs. Health screenings are performed throughout the school year. Parents are notified when screenings are scheduled and receive copies of the results. Within 45 days from the first day of attendance, Head Start children are screened and assessed in the following areas: Developmental, Behavior, Vision & Hearing, Dental.

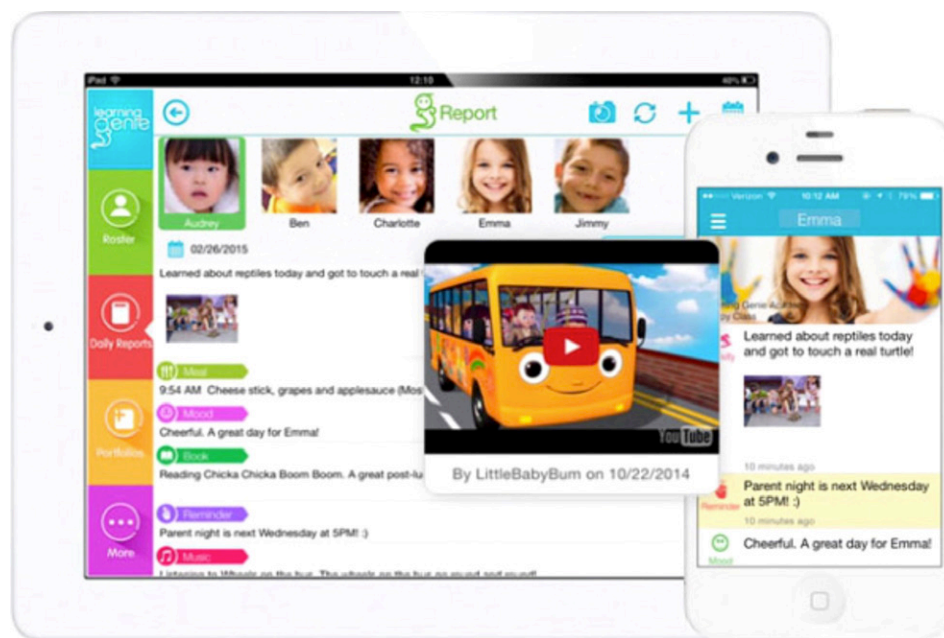
Policy Council

- Elected Parent Representatives
- Past Parents from the Programs
- Local Community Agency Representatives
- Part in Major Policy Decisions
- Members Increase Communication
- Leadership & Advocacy Skills
- Supports Program & Community Activities



Desired Results Developmental Profile

DRDP measures the child's Average Developmental Level (ADL). Developmental progress is monitored through teacher observations via the Learning Genie Application. The DRDP Preschool 2015 Edition (DRDP-2015) is administered three times per year. The DRDP allows our programs to assess how children are developing individually within growth domains across all classrooms program wide.



Two-way Messaging with Families with Auto Translation

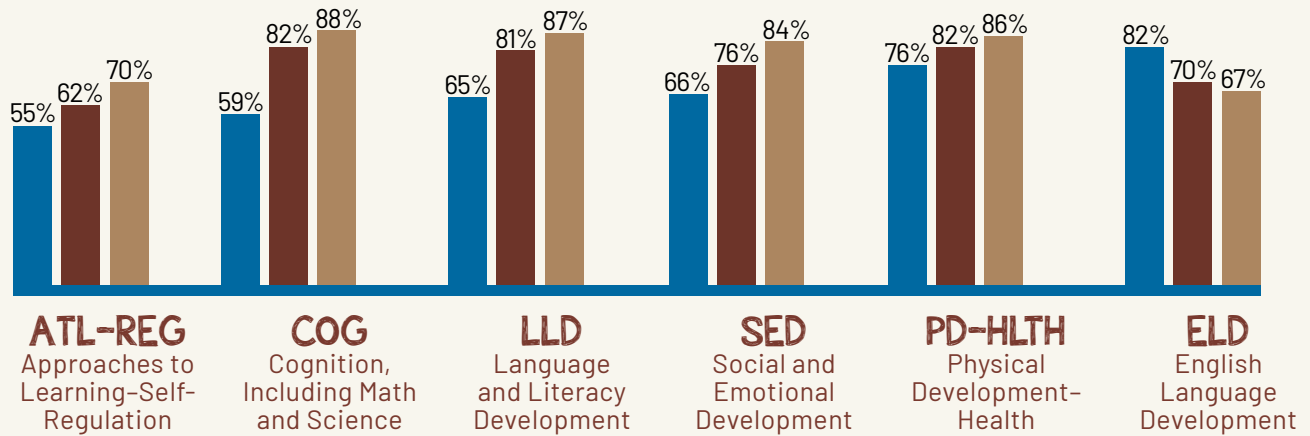
Developmental Progress

Percentage
(Fall 2022)

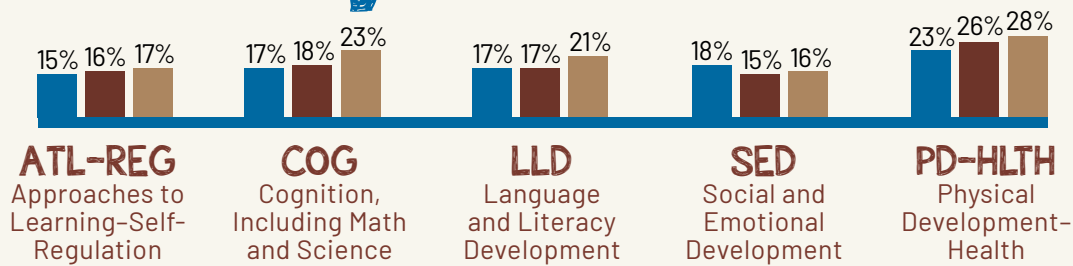
Percentage
(Winter 2022)

Percentage
(Spring 2023)

Head Start

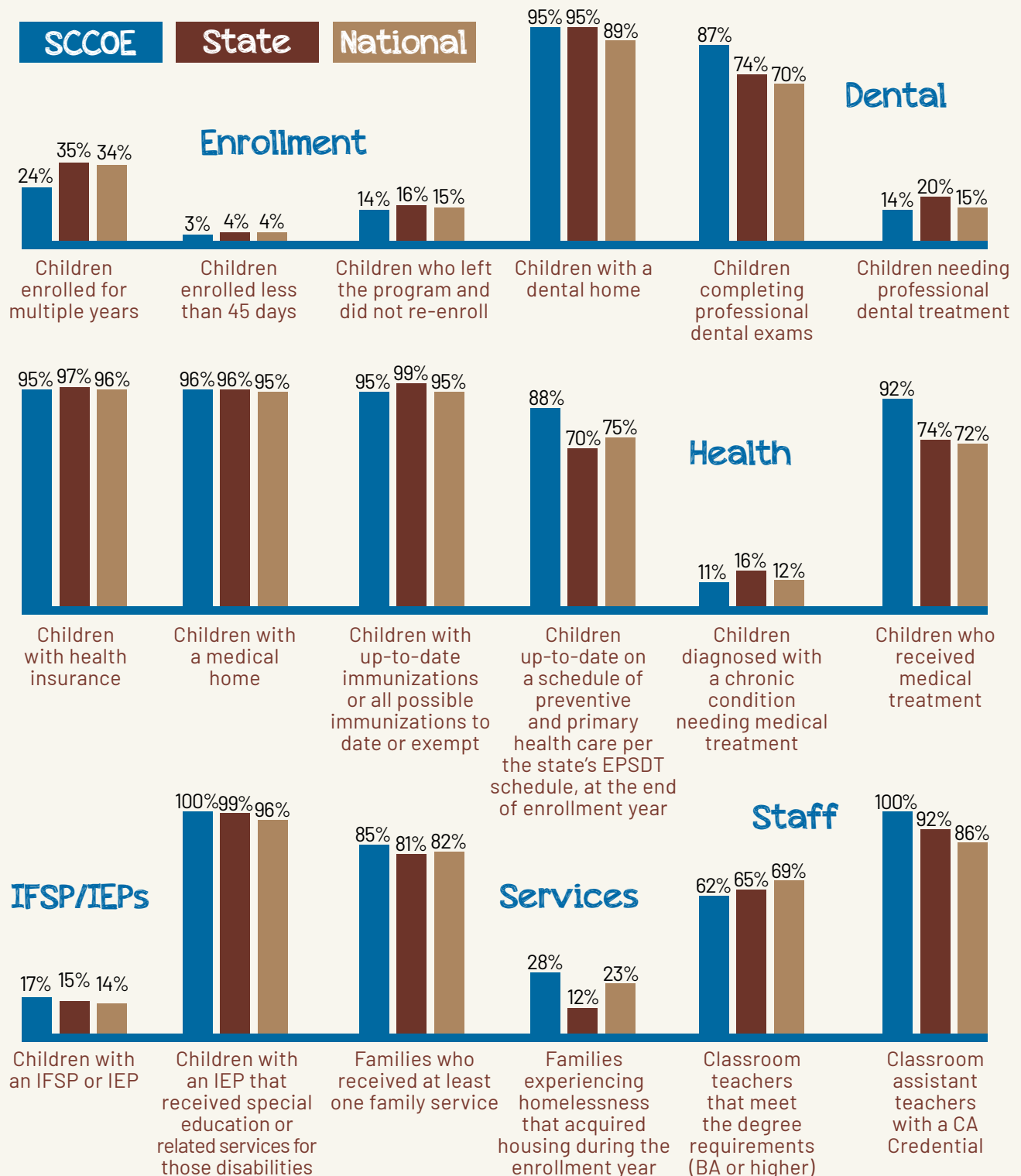


Early Head Start



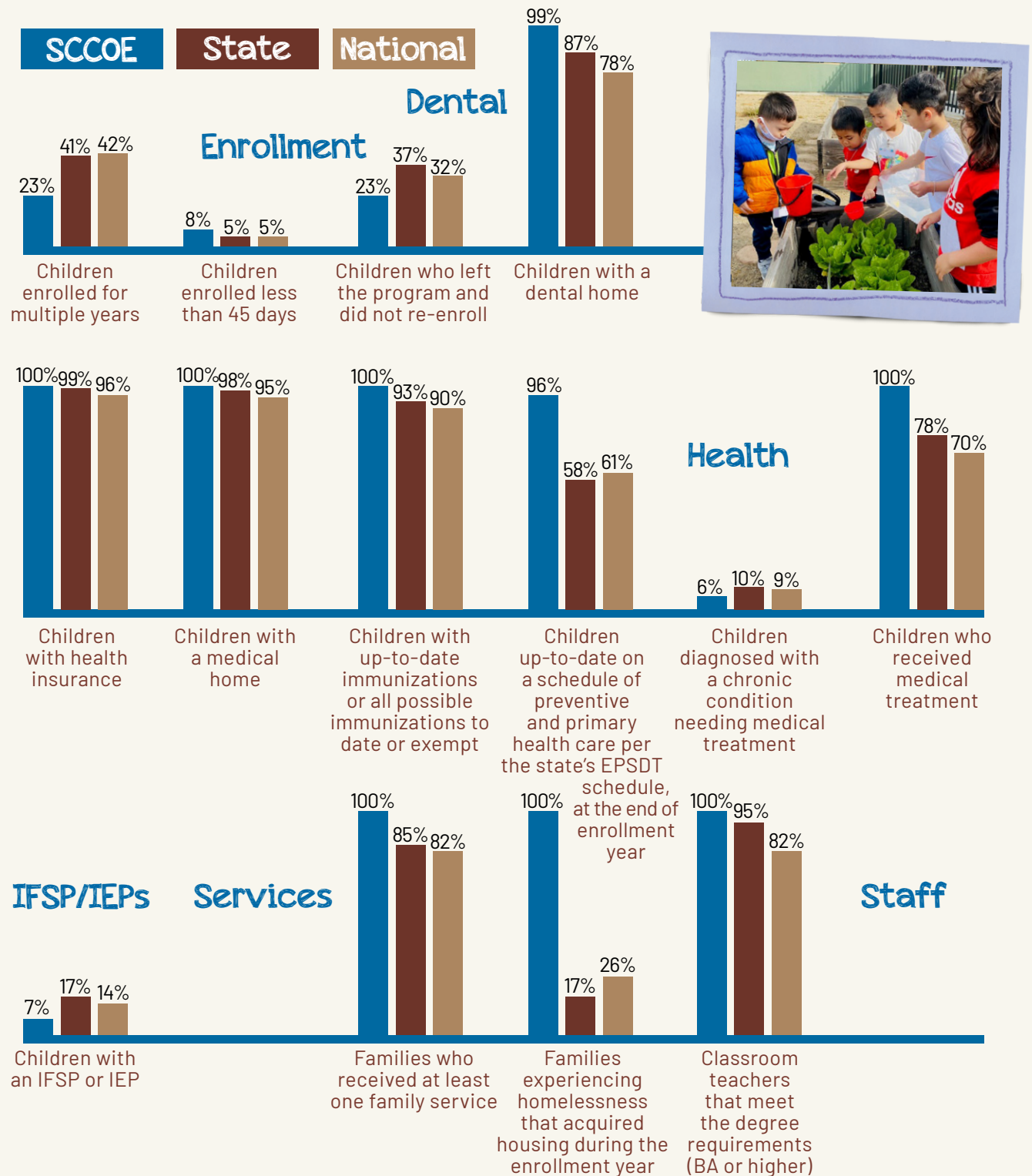
Program Information Report

Head Start



Program Information Report

Early Head Start



Financial Accountability

Fiscal responsibility and transparency are tasks that benefits us, our county, and the communities we serve. Therefore, as required by the Head Start Act §644(a)(2), we provide both our programmatic budget and expenditures as well as public and private funds received from each source. All Head Start | Early Head Start Programs are reviewed every year by the Administration for Children and Families (ACF), Department of Health and Human Services.

The Annual Independent Financial Audit for FY2022-23 made known that the audit findings required to be reported by Circular A-133 had no federal findings or questioned costs in 2022-23.

The table below describes the budgetary expenditures as well as the proposed budget for the fiscal year beginning May 2022 to May 2023.

	Approved Budget	Actual Expenditures
Personnel	\$14,160,789.00	\$10,816,861.00
Fringe Benefits	\$7,507,108.00	\$6,466,754.00
Travel	-	\$52,393.00
Equipment	\$493,175.00	\$19,827.00
Supplies	\$639,216.00	\$371,146.00
Construction	\$4,763,473.00	-
Contractual	\$5,090,719.00	\$2,600,621.00
Other	\$1,016,782.00	\$591,034.00
TOTAL DIRECT COSTS	\$33,671,262.00	\$20,918,637.00
Indirect Cost	\$2,976,865.00	\$1,719,741.00
TOTAL	\$36,648,127.00	\$22,638,378.00



Financial Accountability

Fiscal responsibility and transparency are tasks that benefits us, our county, and the communities we serve. Therefore, as required by the Head Start Act §644(a)(2), we provide both our programmatic budget and expenditures as well as public and private funds received from each source. All Head Start | Early Head Start Programs are reviewed every year by the Administration for Children and Families (ACF), Department of Health and Human Services.

The Annual Independent Financial Audit for FY2022-23 made known that the audit findings required to be reported by Circular A-133 had no federal findings or questioned costs in 2022-23.

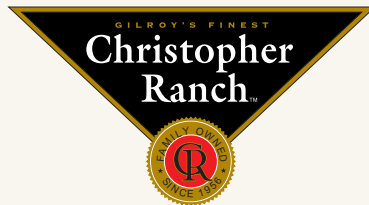
****NEW LANGUAGE HERE** The table below describes the budgetary expenditures as well as the proposed budget for the fiscal year beginning May 2022 to May 2023.**

Revenues and Other Financing Sources	
Local Control Funding Formula	\$184,219,864.00
Federal Revenue	\$61,102,315.00
Other State Revenues	\$32,805,940.00
Other Local Revenues	\$62,289,372.00
Total Revenues	\$340,417,491.00

Expenditures	
Instruction	\$104,795,355.00
Instruction-Related Activities	\$43,457,616.00
Pupil Services	\$45,372,453.00
Ancillary Services	\$14,419,508.00
Community Services	\$700,586.00
Enterprise Services	\$6,050.00
Administration	\$56,635,690.00
Plant Services	\$9,020,391.00
Other Outgo	\$60,600,900.00
Total Expenditures	\$335,008,549.00

Community Partners

Our partners provide the highest quality services to foster each child's social, emotional, cognitive, educational, and physical development and supports families by building partnerships that help each family to attain their personal family goals.







Early Learning Services Dept.
Head Start and Early Head Start Programs
(408) 453-6900 or (800) 820-8182
www.myheadstart.org

HS | EHS is funded by a grant from the U.S. Department
of Health and Human Services, Administration
for Children and Families, Office of Head Start.



**Santa Clara County
Office of Education**

1290 Ridder Park Drive
San Jose, CA 95131- 2304
www.sccoe.org