



Santa Clara County Office of Education

Charles Weis, Ph.D.
County Superintendent of Schools

May 13, 2010

TO: Charles Weis, Ph.D., Superintendent

FROM: Linda Aceves, Chief Academic Officer, Educational Services Branch
Dan Mason, Research Analyst, Assessment and Accountability

SUBJECT: Release of 2009 Base Academic Performance Index (API)

The California Department of Education (CDE) released the 2009 Base API reports on May 13. These reports provide the 2009 Base API scores and growth targets for the 2009-10 school year. API results are reported twice a year: Base API in the Spring and a corresponding Growth API in late summer, which measures growth of a school in a year. Staff has prepared the following analysis for your review. Schools that were not ranked were not included in these calculations.

Santa Clara County (SCC) Compared to California (CA)

- The SCC 2009 Base API median increased from 792 to 806, and was 52 points higher than the statewide API, which increased from 741 to 754 (*Figure 1*).
- The SCC Base API median has increased by 65 points since 2000 (from 741 to 806) (*Figure 1*).
- SCC elementary, middle and high schools are outperforming their cohorts at the statewide level (*Figure 2*).
- Fifty-two percent of SCC schools (193 of 372) have a 2009 Base API at or above 800, compared to 37% statewide (3,392 of 9,153) (*Figure 3*).
- The SCC districts' Base API median was higher than the statewide districts' Base API median: 816 compared to 768 (*Figure 4*).
- Overall, in SCC, Asian, White, Hispanic, Socioeconomically Disadvantaged and English Learner subgroups had higher median API's when compared to the state; however, CA Filipino, African American and Students with Disabilities median API's were higher than those SCC subgroups (*Figure 5*).

Summary of Results for SCC Schools

- Each decile ranking consists of 10% of the state’s schools. The top 10 % of CA schools are given a statewide decile rank of 10 while the bottom 10% are given a decile rank of 1. If a county’s schools mirrored the CA distribution, then the county’s schools would be equally distributed across the deciles with 10% of their schools grouped into each decile. SCC schools do not mirror CA as 25% of SCC schools were ranked in decile 10 (*figure 6*).
- Twenty two percent of SCC schools (82 of 372) fall in Deciles 1-3 (*figure 7*).
- Elementary and middle schools have made significant growth in Base API medians from the 2000 Base API to the 2009 Base API. Elementary schools have gained 71 points and middle schools 74 points (though middle schools dropped 4 points this past year), while high schools have gained 3 points (*Figure 8*).
- Although each SCC subgroup has grown significantly over the past 10 years, there continues to be a gap between White, Asian and Filipino performance compared to the other subgroups. The median APIs for Asian (930), White (899) and Filipino (811) students are significantly higher than those for English Learner (745), Socioeconomically Disadvantaged (730), Hispanic (715), African American (633) and Students with Disabilities (540) (*Figure 9*).

Table 1: SCC Schools are the Top 2 (and 11 of the Top 30) Performing Schools in CA

Rank*	School	District	2009 Base API
1	Murdock-Portal Elementary	Cupertino Union	998
2	William Faria Elementary	Cupertino Union	996
T 6	Millikin Elementary	Santa Clara Unified	989
T 11	Nelson S. Dilworth Elementary	Cupertino Union	986
T 14	Oak Avenue Elementary	Los Altos Elementary	983
T 16	Herbert Hoover Elementary	Palo Alto Unified	982
T 21	Garden Gate Elementary	Cupertino Union	980
T 24	William Regnart Elementary	Cupertino Union	979
26	Joaquin Miller Middle	Cupertino Union	978
T 29	Duveneck Elementary	Palo Alto Unified	975
T 29	John F. Kennedy Middle	Cupertino Union	975

* T indicates tied rank(s).

Table 2. Three Top Performing SCC Districts

SCC Rank	District	API	CA Rank*
1	Saratoga Union Elementary	966	T 1
2	Los Altos Elementary	959	T 4
3	Cupertino Union	946	T 9

* T indicates tied rank(s).

Table 3. Three Top Performing SCC Elementary Schools

SCC Rank	Elementary School	District	API	CA Elem. Rank*
1	Murdock-Portal Elementary	Cupertino Union	998	1
2	William Faria Elementary	Cupertino Union	996	2
3	Millikin Elementary	Santa Clara Unified	989	T 6

* T indicates tied rank(s).

Table 4. Three Top Performing SCC Middle Schools

SCC Rank	Middle School	District	API	CA Middle Rank
1	Joaquin Miller Middle	Cupertino Union	978	3
2	John F. Kennedy Middle	Cupertino Union	975	5
3	Sam H. Lawson Middle	Cupertino Union	971	6

Table 5. Three Top Performing SCC High Schools

SCC Rank	High School	District	API	CA High Rank*
1	Monta Vista High	Fremont Union High	935	T 8
2	Saratoga High	Los Gatos-Saratoga Union	933	10
3	Lynbrook High	Fremont Union High	925	T 13

* T indicates tied rank(s).

Table 6. Santa Clara County Districts with API Scores Over 800

District	2009 Base API
Saratoga Union Elementary	966
Los Altos Elementary	959
Cupertino Union	946
Lakeside Joint	935
Los Gatos Union Elementary	923
Loma Prieta Joint Union Elementary	921
Palo Alto Unified	919
Los Gatos-Saratoga Joint Union	897
Union Elementary	886
Fremont Union High	869
Cambrian	867
Evergreen Elementary	855
Mountain View-Los Altos Union	840
Moreland Elementary	830
Berryessa Union Elementary	818
Mountain View Whisman	817
Milpitas Unified	814
Campbell Union Elementary	806

Table 7. 10-10 Schools: Santa Clara County Schools Ranked in 10th Decile in both the Statewide and Similar Schools Ranks

School	District	2009 Base API
Murdock-Portal Elementary	Cupertino Union	998
William Faria Elementary	Cupertino Union	996
Millikin Elementary	Santa Clara Unified	989
Nelson S. Dilworth Elementary	Cupertino Union	986
Oak Avenue Elementary	Los Altos Elementary	983
Joaquin Miller Middle	Cupertino Union	978
John F. Kennedy Middle	Cupertino Union	975
Sam H. Lawson Middle	Cupertino Union	971
Redwood Middle	Saratoga Union Elementary	969
Santa Rita Elementary	Los Altos Elementary	966
Silver Oak Elementary	Evergreen Elementary	966
Ardis G. Egan Junior High	Los Altos Elementary	954
Monta Vista High	Fremont Union High	935
Saratoga High	Los Gatos-Saratoga Joint Union	933
Rocketship Mateo Sheedy Elementary	Santa Clara County Office of Ed	925
Lynbrook High	Fremont Union High	925
Dr. T. J. Ownes Gilroy Early College Acad.	Gilroy Unified	894
KIPP Heartwood Academy	Alum Rock Union Elementary	893

Table 8. SCC Charter Schools API Scores

School	District	2009 Base API
Bullis Charter	Santa Clara County Office of Ed.	971
Marshall Lane Elementary	Campbell Union Elementary	928
Rocketship Mateo Sheedy Elementary	Santa Clara County Office of Ed.	925
Village	Campbell Union Elementary	919
Fammatre Charter	Cambrian	913
Forest Hill Elementary	Campbell Union Elementary	909
Rolling Hills Middle	Campbell Union Elementary	902
Discovery Charter	Santa Clara County Office of Ed.	900
KIPP Heartwood Academy	Alum Rock Union Elementary	893
Sartorette Charter	Cambrian	890
KIPP San Jose Collegiate	East Side Union High	883
Charter School of Morgan Hill	Morgan Hill Unified	880
Farnham Charter	Cambrian	864
Price Charter Middle	Cambrian	838
Capri Elementary	Campbell Union Elementary	831
Castlemont Elementary	Campbell Union Elementary	795
Lynhaven Elementary	Campbell Union Elementary	791
Voices College-bound Language Academy	Franklin-McKinley Elementary	772
Sherman Oaks Elementary	Campbell Union Elementary	742
Monroe Middle	Campbell Union Elementary	736
Rosemary Elementary	Campbell Union Elementary	734
Blackford Elementary	Campbell Union Elementary	714
Walter L. Bachrodt Elementary	San Jose Unified	687
Downtown College Preparatory	San Jose Unified	680
Escuela Popular/Center for Training and	East Side Union High	639
Escuela Popular Accelerated Family Learn	East Side Union High	635
Latino College Preparatory Academy	East Side Union High	625
ACE Charter	Santa Clara County Office of Ed.	617
Downtown College Prep Alviso	Santa Clara Unified	603
Leadership Public Schools - San Jose	Santa Clara County Office of Ed.	595
MACSA Academica Calmecac	East Side Union High	572
MACSA El Portal Leadership Academy	Gilroy Unified	520

Figure 1

**Santa Clara County Schools' Median Base API vs. California Base API
2000 to 2009 All Students**

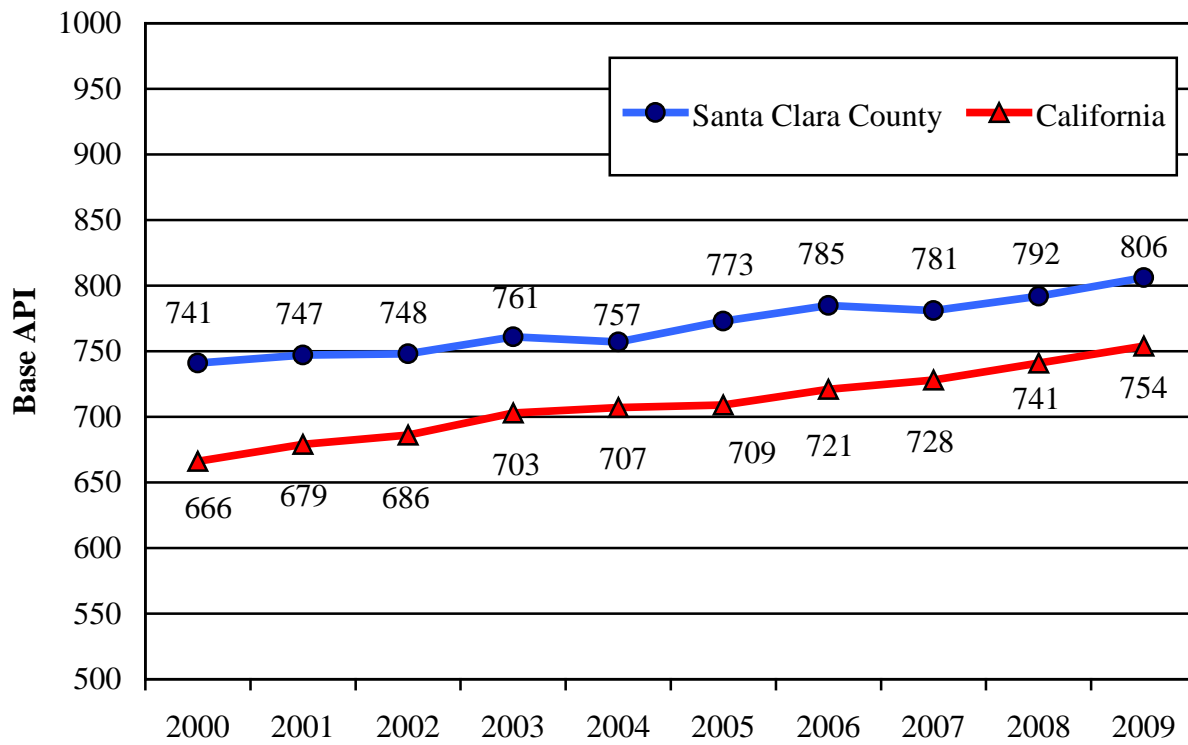
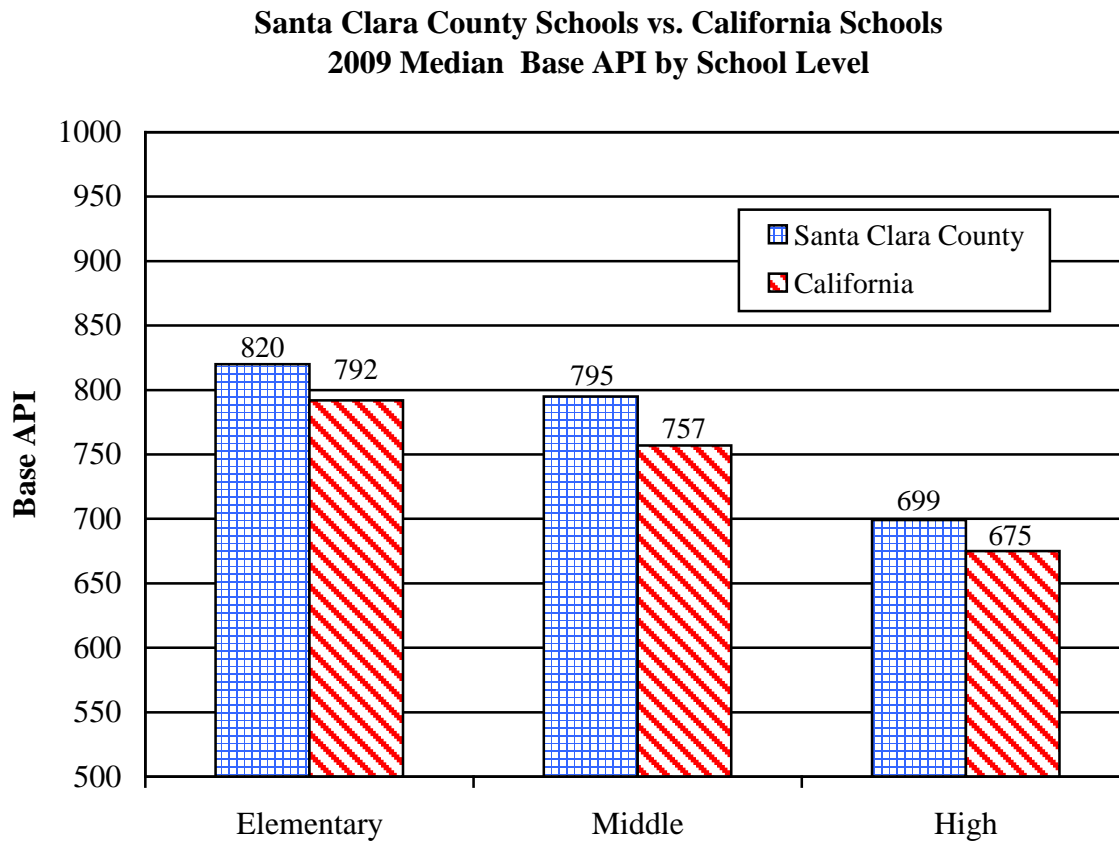


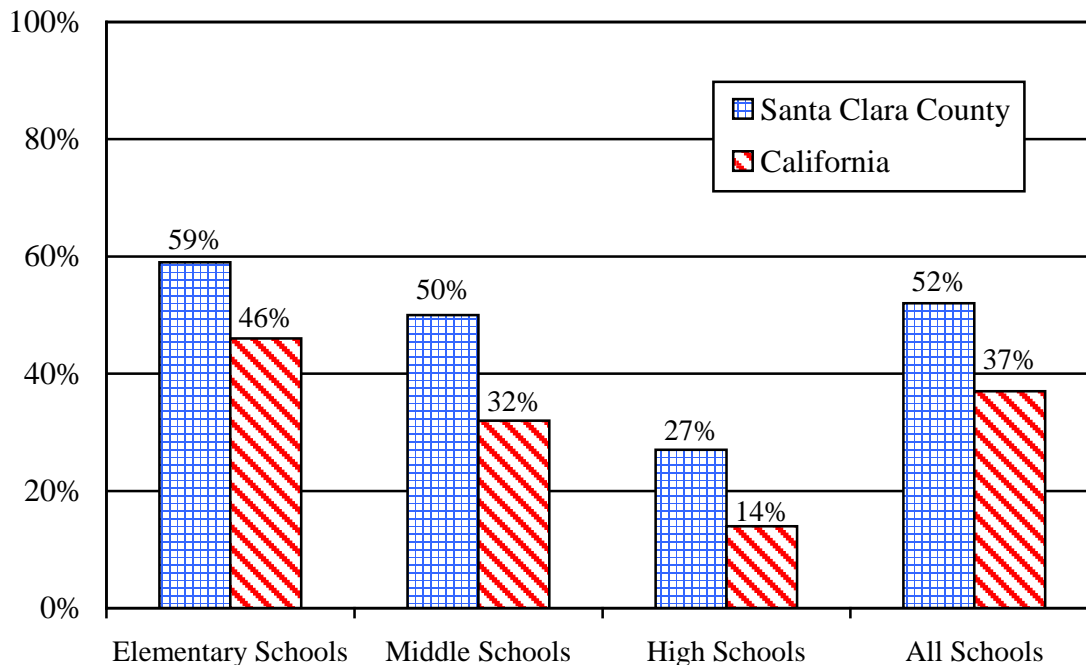
Figure 2



* The California API by School Level calculations are based on Median School APIs.

Figure 3

**Percent of Santa Clara County vs. California Schools At or Above
 2009 Base API Performance Target of 800 by School Level**



Number of Schools At or Above 800				
	Santa Clara County		California	
	800+ API	Total Schools	800+ API	Total Schools
Elementary Schools	144	243	2,676	5,780
Middle Schools	31	62	438	1,349
High Schools	18	67	278	2,024
All Schools	193	372	3,392	9,153

Figure 4

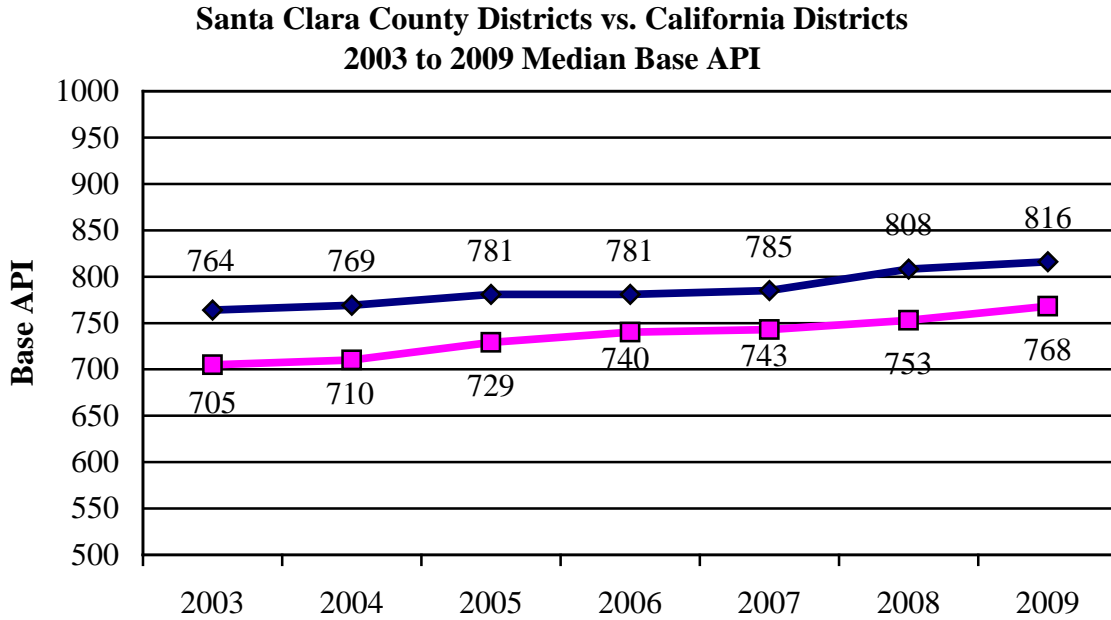
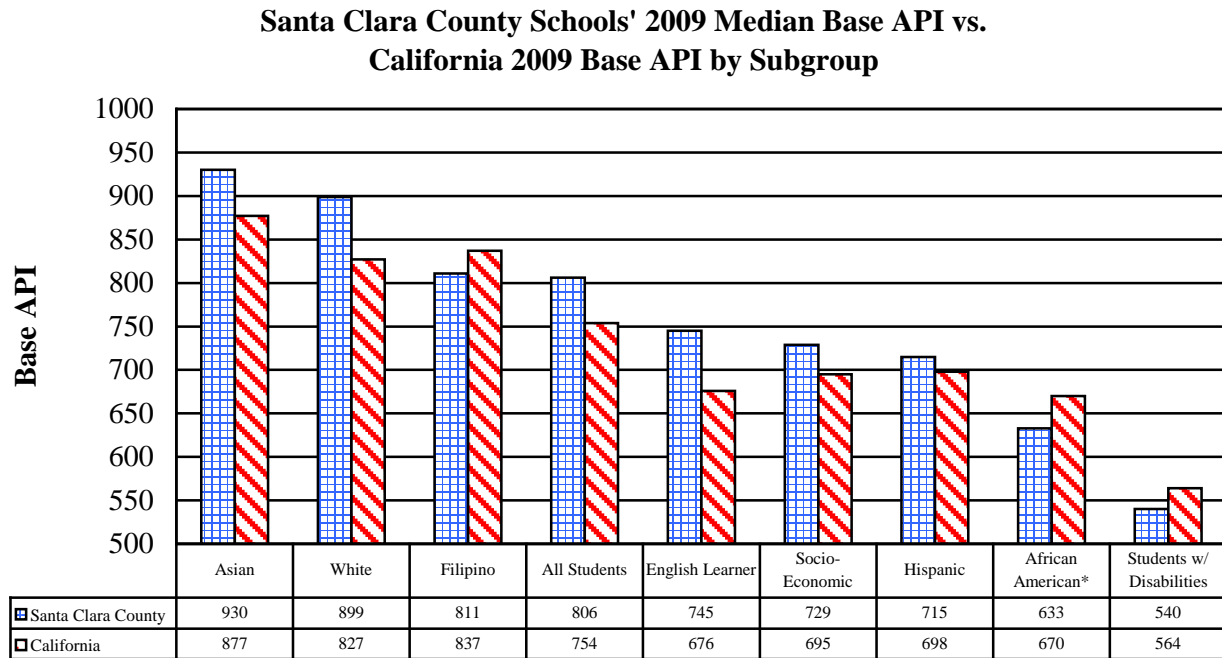


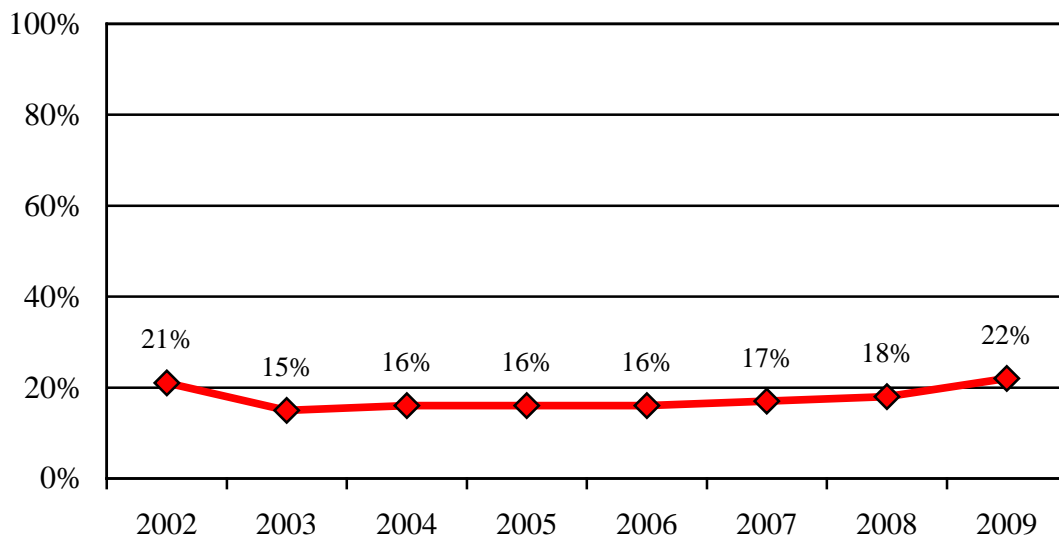
Figure 5



* African American SCC students are numerically significant at only one school. The 109 African American students at the school represent 2% of the African Americans included in the SCC Base API median.

Figure 7

**Percent of Santa Clara County Schools
 Statewide Decile Ranks 1, 2 or 3: 2002 - 2009 Median Base API**



	2002	2003	2004	2005	2006	2007	2008	2009
Schools 1 - 3	76	52	54	56	55	58	62	82*
Total Schools	359	336	344	345	345	346	349	372*

* The 2009 Base API includes, for the first time, statewide decile ranks for all schools with Base API scores. In the past, some schools with Base API scores were not given statewide decile ranks.

Figure 8

**Santa Clara County Schools' 2000 - 2009 Median Base API
 by School Level**

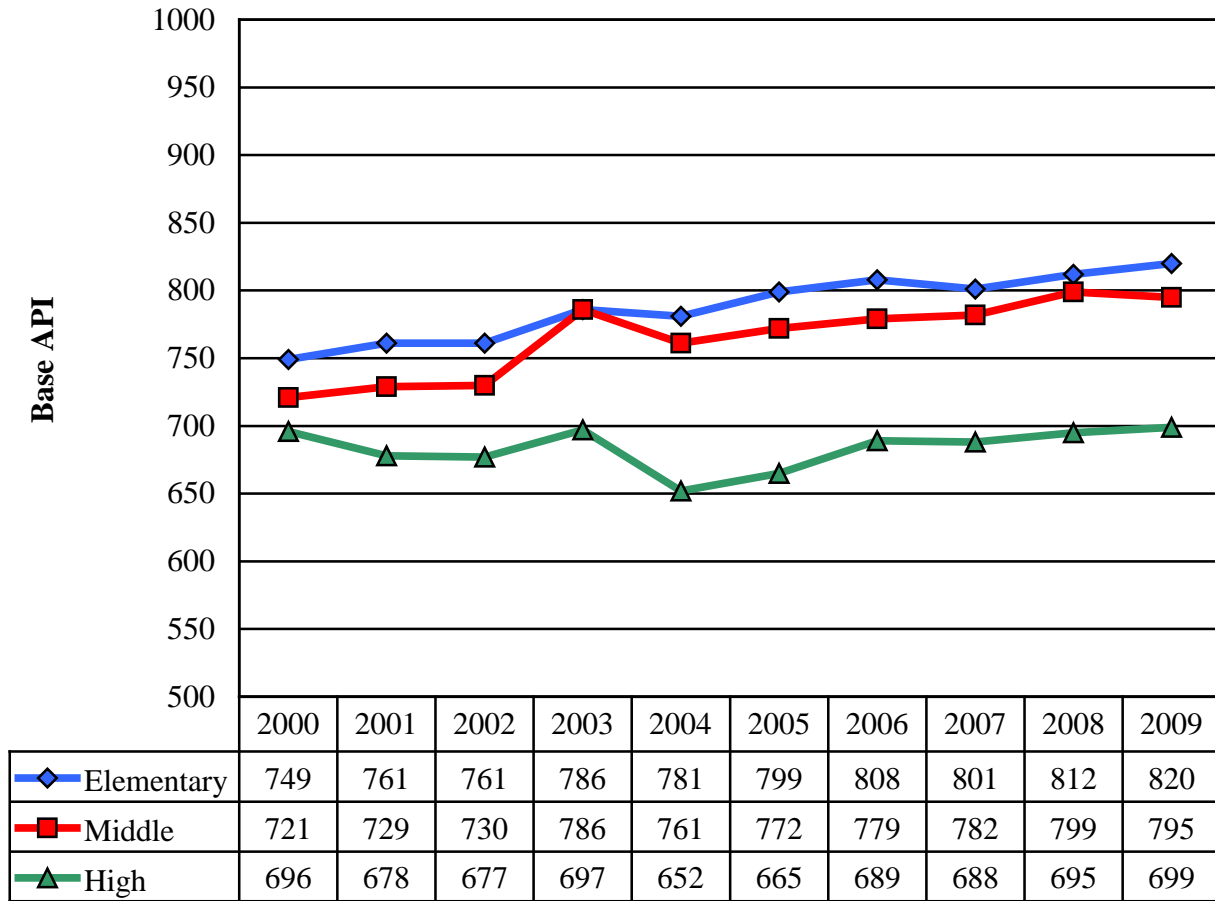
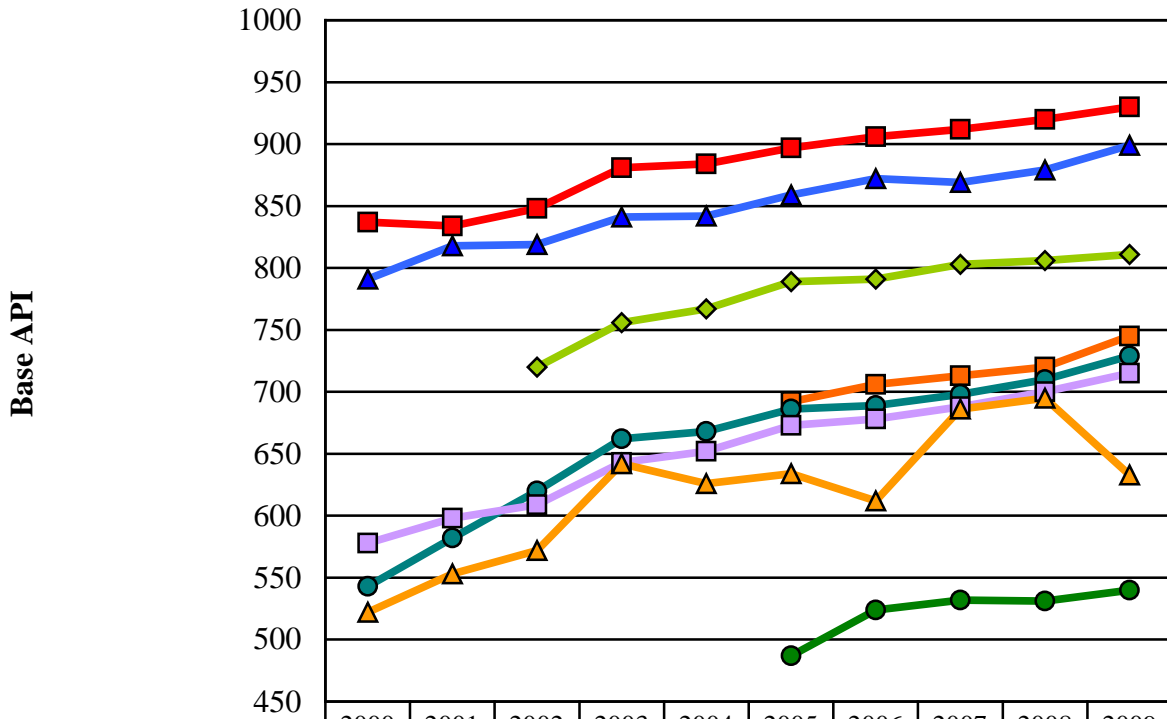


Figure 9

**Santa Clara County Schools' 1999 - 2009 Median Base API
 by Subgroup**



	2000	2001	2002	2003	2004	2005	2006	2007	2008	2009
Asian	837	834	848	881	884	897	906	912	920	930
White	791	818	819	841	842	859	872	869	879	899
Filipino			720	756	767	789	791	803	806	811
English Learner						692	706	713	720	745
Socioeconomically Disadvantaged	543	582	620	662	668	686	689	698	710	729
Hispanic	578	598	609	643	652	673	678	688	700	715
African American	522	553	572	642	626	634	612	686	695	633
Students with Disabilities						487	524	532	531	540

* African American SCC students are numerically significant at only one school. The 109 African American students at the school represent 2% of the African Americans included in the SCC Base API median.

Table 9. SCC Students included in the SCC Base API and the Numerically Significant Subgroup Populations at Schools

	Number of Students Included in the SCC 2009 Base API Median		Numerically Significant Subgroup Populations at Schools	
Hispanic	66,596	36.5%	63,870	41.4%
Asian	49,019	26.8%	44,455	28.8%
White	45,874	25.1%	41,531	26.9%
Filipino	9,261	5.1%	4,204	2.7%
African American	5,307	2.9%	109	0.1%
Two or More Races	2,304	1.3%	0	0.0%
Pacific Islander	1,245	0.7%	0	0.0%
American Indian	691	0.4%	0	0.0%
Socioeconomically Disadvantaged	69,430	38.0%	66,724	43.3%
English Learner	62,617	34.3%	59,994	38.9%
Student with Disabilities	18,027	9.9%	5,825	3.8%
Total	182,647*		154,169	

*The sum of the students by Ethnicity (180,297) does not add up to the Total number of Students (182,647) because 2,350 students did not have ethnic classifications.

Table 10. All Santa Clara County Schools with 2009 Base API Score Over 800

School	District	2009 Base API
Murdock-Portal Elementary	Cupertino Union	998
William Faria Elementary	Cupertino Union	996
Millikin Elementary	Santa Clara Unified	989
Nelson S. Dilworth Elementary	Cupertino Union	986
Oak Avenue Elementary	Los Altos Elementary	983
Herbert Hoover Elementary	Palo Alto Unified	982
Garden Gate Elementary	Cupertino Union	980
William Regnart Elementary	Cupertino Union	979
Joaquin Miller Middle	Cupertino Union	978
Duveneck Elementary	Palo Alto Unified	975
John F. Kennedy Middle	Cupertino Union	975
Montclair Elementary	Cupertino Union	973
Tom Matsumoto Elementary	Evergreen Elementary	972
Blue Hills Elementary	Cupertino Union	971
L. P. Collins Elementary	Cupertino Union	971
Bullis Charter	Santa Clara County Office of Ed.	971
Sam H. Lawson Middle	Cupertino Union	971
Argonaut Elementary	Saratoga Union Elementary	970
Redwood Middle	Saratoga Union Elementary	969
Gardner Bullis Elementary	Los Altos Elementary	968
Silver Oak Elementary	Evergreen Elementary	966
Loyola Elementary	Los Altos Elementary	966
Santa Rita Elementary	Los Altos Elementary	966
Williams Elementary	San Jose Unified	965
Abraham Lincoln Elementary	Cupertino Union	964
Springer Elementary	Los Altos Elementary	963
Saratoga Elementary	Saratoga Union Elementary	963
Almond Elementary	Los Altos Elementary	962
Louis E. Stocklmeir Elementary	Cupertino Union	961
R. I. Meyerholz Elementary	Cupertino Union	961
Stevens Creek Elementary	Cupertino Union	957
Lucille M. Nixon Elementary	Palo Alto Unified	955
Blossom Hill Elementary	Los Gatos Union Elementary	954
Ardis G. Egan Junior High	Los Altos Elementary	954
James Franklin Smith Elementary	Evergreen Elementary	952

School	District	2009 Base API
Foothill Elementary	Saratoga Union Elementary	952
Graystone Elementary	San Jose Unified	951
C. B. Eaton Elementary	Cupertino Union	950
Covington Elementary	Los Altos Elementary	946
Simonds Elementary	San Jose Unified	945
Georgina P. Blach Junior High	Los Altos Elementary	944
West Valley Elementary	Cupertino Union	943
Cherry Chase Elementary	Sunnyvale	943
Addison Elementary	Palo Alto Unified	940
Terman Middle	Palo Alto Unified	940
El Carmelo Elementary	Palo Alto Unified	939
Palo Verde Elementary	Palo Alto Unified	939
Guadalupe Elementary	Union Elementary	938
Carolyn A. Clark Elementary	Evergreen Elementary	937
Lakeside Elementary	Lakeside Joint	935
Monta Vista High	Fremont Union High	935
Saratoga High	Los Gatos-Saratoga Joint Union	933
David Starr Jordan Middle	Palo Alto Unified	932
John Muir Elementary	Cupertino Union	930
Loma Prieta Elementary	Loma Prieta Joint Union Elem.	930
Marshall Lane Elementary	Campbell Union Elementary	928
Los Alamitos Elementary	San Jose Unified	927
Fairmeadow Elementary	Palo Alto Unified	926
Rocketship Mateo Sheedy Elementary	Santa Clara County Office of Ed.	925
Lynbrook High	Fremont Union High	925
Lexington Elementary	Los Gatos Union Elementary	924
Walter Hays Elementary	Palo Alto Unified	924
Juana Briones Elementary	Palo Alto Unified	923
Louise Van Meter Elementary	Los Gatos Union Elementary	921
Daves Avenue Elementary	Los Gatos Union Elementary	920
Village	Campbell Union Elementary	919
Country Lane Elementary	Moreland Elementary	918
Frank L. Huff Elementary	Mountain View Whisman	918
Raymond J. Fisher Middle	Los Gatos Union Elementary	918
Cupertino Middle	Cupertino Union	916
Henry M. Gunn High	Palo Alto Unified	915

C. T. English Middle	Loma Prieta Joint Union Elem.	914
School	District	2009 Base API
Fammatre Charter	Cambrian	913
Evergreen Elementary	Evergreen Elementary	913
Carlton Elementary	Union Elementary	913
Ruskin Elementary	Berryessa Union Elementary	911
Alta Vista Elementary	Union Elementary	911
Bret Harte Middle	San Jose Unified	911
Forest Hill Elementary	Campbell Union Elementary	909
Bagby Elementary	Cambrian	906
Booksin Elementary	San Jose Unified	906
Jane Lathrop Stanford Middle	Palo Alto Unified	906
Dwight D. Eisenhower Elementary	Cupertino Union	904
Noddin Elementary	Union Elementary	903
Laurelwood Elementary	Santa Clara Unified	902
Rolling Hills Middle	Campbell Union Elementary	902
Gussie M. Baker Elementary	Moreland Elementary	901
Palo Alto High	Palo Alto Unified	901
Discovery Charter	Santa Clara County Office of Ed.	900
Chaboya Middle	Evergreen Elementary	895
Dr. T. J. Ownes Gilroy Early College Aca	Gilroy Unified	894
Taylor (Bertha) Elementary	Oak Grove Elementary	893
Escondido Elementary	Palo Alto Unified	893
KIPP Heartwood Academy	Alum Rock Union Elementary	893
Washington Elementary	Santa Clara Unified	891
Sartorette Charter	Cambrian	890
John Sinnott Elementary	Milpitas Unified	888
Curtner Elementary	Milpitas Unified	887
Ohlone Elementary	Palo Alto Unified	887
KIPP San Jose Collegiate	East Side Union High	883
Charter School of Morgan Hill	Morgan Hill Unified	880
D. J. Sedgwick Elementary	Cupertino Union	879
Cumberland Elementary	Sunnyvale	879
Oster Elementary	Union Elementary	879
Cupertino High	Fremont Union High	879
Union Middle	Union Elementary	878
Marshall Pomeroy Elementary	Milpitas Unified	877
Benjamin Bubb Elementary	Mountain View Whisman	873

Los Gatos High	Los Gatos-Saratoga Joint Union	873
School	District	2009 Base API
Norwood Creek Elementary	Evergreen Elementary	871
Pearl Zanker Elementary	Milpitas Unified	871
Nordstrom Elementary	Morgan Hill Unified	871
Paradise Valley/Machado Elementary	Morgan Hill Unified	869
Leland High	San Jose Unified	869
Dartmouth Middle	Union Elementary	869
Warren E. Hyde Middle	Cupertino Union	867
Manuel De Vargas Elementary	Cupertino Union	866
Mountain View High	Mountain View-Los Altos Union	865
Farnham Charter	Cambrian	864
Northwood Elementary	Berryessa Union Elementary	863
Bracher Elementary	Santa Clara Unified	862
Barron Park Elementary	Palo Alto Unified	861
Luigi Aprea Elementary	Gilroy Unified	856
Noble Elementary	Berryessa Union Elementary	855
Sutter Elementary	Santa Clara Unified	854
Reed Elementary	San Jose Unified	853
Hacienda Science/Environmental Magnet	San Jose Unified	852
Homestead High	Fremont Union High	852
Marian A. Peterson Middle	Santa Clara Unified	850
Easterbrook Discovery	Moreland Elementary	849
Ponderosa Elementary	Santa Clara Unified	849
Millbrook Elementary	Evergreen Elementary	845
Schallenberger Elementary	San Jose Unified	844
Majestic Way Elementary	Berryessa Union Elementary	840
Chester W. Nimitz Elementary	Cupertino Union	840
Sakamoto Elementary	Oak Grove Elementary	840
Sierramont Middle	Berryessa Union Elementary	838
Price Charter Middle	Cambrian	838
Ledesma (Rita) Elementary	Oak Grove Elementary	837
Evergreen Valley High	East Side Union High	837
Braly Elementary	Santa Clara Unified	834
Cadwallader Elementary	Evergreen Elementary	832
Ramblewood Elementary	Franklin-McKinley Elementary	832
Glider Elementary	Oak Grove Elementary	832
Capri Elementary	Campbell Union Elementary	831

Lietz Elementary	Union Elementary	831
School	District	2009 Base API
Santa Teresa Elementary	Oak Grove Elementary	830
Hammer Montessori at Galarza Elementary	San Jose Unified	830
Pioneer High	San Jose Unified	829
Learning in an Urban Community with High	Alum Rock Union Elementary	828
William Burnett Elementary	Milpitas Unified	827
River Glen	San Jose Unified	827
Thomas Russell Junior High	Milpitas Unified	827
Middle College High	San Jose Unified	826
Los Altos High	Mountain View-Los Altos Union	825
Quimby Oak Middle	Evergreen Elementary	825
Rancho Milpitas Junior High	Milpitas Unified	825
Edith Landels Elementary	Mountain View Whisman	824
Parkview Elementary	Oak Grove Elementary	824
Ellis Elementary	Sunnyvale	823
Cherrywood Elementary	Berryessa Union Elementary	822
Sunnyvale Middle	Sunnyvale	822
Laurelwood Elementary	Evergreen Elementary	821
Isaac Newton Graham Middle	Mountain View Whisman	821
Holly Oak Elementary	Evergreen Elementary	820
Valle Vista Elementary	Mt. Pleasant Elementary	820
Alexander Rose Elementary	Milpitas Unified	818
George C. Payne Elementary	Moreland Elementary	818
Frost (Earl) Elementary	Oak Grove Elementary	817
Rachel Carson Elementary	San Jose Unified	816
George Mayne Elementary	Santa Clara Unified	816
Shirakawa (George, Sr.) Elementary	Franklin-McKinley Elementary	815
Las Animas Elementary	Gilroy Unified	814
Willow Glen Elementary	San Jose Unified	814
Piedmont Hills High	East Side Union High	814
Oak Ridge Elementary	Oak Grove Elementary	813
Renaissance Academy	Alum Rock Union Elementary	812
Cedar Grove Elementary	Evergreen Elementary	811
Millard McCollam Elementary	Alum Rock Union Elementary	810
Leroy Anderson Elementary	Moreland Elementary	810
Baldwin (Julia) Elementary	Oak Grove Elementary	810

Summerdale Elementary	Berryessa Union Elementary	809
Morrill Middle	Berryessa Union Elementary	809
School	District	2009 Base API
Solorsano Middle	Gilroy Unified	808
Vinci Park Elementary	Berryessa Union Elementary	806
Anthony Spangler Elementary	Milpitas Unified	806
Los Paseos Elementary	Morgan Hill Unified	806
Dove Hill Elementary	Evergreen Elementary	804
Castillero Middle	San Jose Unified	804
Laneview Elementary	Berryessa Union Elementary	803
Brooktree Elementary	Berryessa Union Elementary	802
Allen at Steinbeck	San Jose Unified	802
Leigh High	Campbell Union High	801

Table 11: Schools That Did Not Receive a 2009 Base API Score

School	District	Flag
Christa McAuliffe Elementary	Cupertino Union	1
Gilroy High	Gilroy Unified	3
University Preparatory Academy Charter	Santa Clara County Office of Ed.	3
Berryessa Union Elementary	Berryessa Union Elementary	4
Cambrian Community	Cambrian	4
Community Day	Campbell Union Elementary	4
Camden Community Day	Campbell Union High	4
Gilroy Community Day	Gilroy Unified	4
Montebello Elementary	Montebello Elementary	4
Greendell	Palo Alto Unified	4
Packard Children's Hospital/Stanford	Palo Alto Unified	4
Community Career Academy (Continuation)	San Jose Unified	4
Gunderson Plus (Continuation)	San Jose Unified	4
Lincoln Plus High	San Jose Unified	4
Pioneer Plus (Continuation)	San Jose Unified	4
San Jose Community Middle	San Jose Unified	4
San Jose High Academy Plus	San Jose Unified	4
Willow Glen Plus (Continuation)	San Jose Unified	4
Alternative Placement Academy	Santa Clara County Office of Ed.	4
Santa Clara County Juvenile Hall	Santa Clara County Office of Ed.	4
Adair Community Day	Sunnyvale	4
Genesis High	East Side Union High	6
San Jose Conservation Corps Charter	East Side Union High	6
Community Day	Fremont Union High	6

Flag	Flag Definition
1	<p>The school's proportion of students excused at parent request compared to its Standardized Testing and Reporting (STAR) program enrollment on the first day of testing is equal to or greater than 10 percent.</p> <p>When a school's proportion of parental waivers is equal to or greater than 10 but less than 20 percent, the California Department of Education conducts standard statistical tests to check whether the pupils tested at the school were representative of the entire school's population.</p> <p>This school failed the statistical test or its proportion of parental waivers in 2009 was 20 percent or greater, therefore, the school does not have a valid 2009 API Base.</p>
3	2009 Base API cannot be reported because for at least one STAR content area used in API calculations, this school failed to test a significant portion of students who were not exempt from testing in 2009.
4	In 2009, this school had fewer than 11 valid STAR test scores.
6	School has California High School Exit Exam (CAHSEE) results but no valid STAR results.