

Joe Fimiani
Interim Superintendent

The California Department of Education (CDE) released the 2007 Base API reports on May 21. These reports provide the 2007 Base API scores and growth targets for the 2008-09 school year. API results are reported twice a year: Base API after the first of the year, and corresponding Growth API, which measures growth of a school in a year, in the fall. The release of the 2007 Base API was delayed by several months this year because CDE had to make adjustments to account for third- through fifth-grade students' taking the California Modified Assessment (CMA) this spring. (Schools that were not ranked were not included in these calculations.)

The SCCOE Standards and Assessment staff has prepared the following analysis of the results.

Santa Clara County (SCC) Compared to California (CA)

- The SCC 2007 Base API median decreased slightly from 785 to 781, but was significantly higher than the statewide API, which increased from 721 to 728 (*Figure 1*).
- The SCC Base API median has increased by 40 points since 2000 (from 741 to 781) (*Figure 1*).
- SCC elementary, middle and high schools are out-performing their cohorts statewide (*Figure 2*).
- Forty-three percent of SCC schools (158 of 369) have a 2007 Base API at or above 800, compared to 28 percent statewide (2,552 of 8,961) (*Figure 3*).
- The SCC districts' Base API median was higher than the statewide districts' Base API median: 785 compared to 743 (*Figure 4*).
- Overall, in SCC, African American, Asian, Hispanic, White, Socioeconomically Disadvantaged and English Learner subgroups had higher median APIs when compared to the state. However, SCC Filipino and Students with Disabilities subgroups' median APIs were lower than comparable CA subgroups (*Figure 5*).

County Board of Education

The Top 3 (and 10 of the Top 21) Performing Schools in the State are from SCC

Rank	School	District	2007 Base API
1	Faria (William) Elementary	Cupertino Union	995
2	Millikin Elementary	Santa Clara Unified	994
3	Murdock-Portal Elementary	Cupertino Union	988
7	Hoover (Herbert) Elementary	Palo Alto Unified	981
12	Dilworth (Nelson S.) Elementary	Cupertino Union	979
15	Regnart (William) Elementary	Cupertino Union	973
16	Loyola Elementary	Los Altos Elementary	972
19	Argonaut Elementary	Saratoga Union Elementary	969
19	Oak Avenue Elementary	Los Altos Elementary	969
21	Bullis Charter School	Santa Clara County Office of Education	968

Statewide Schools Ranked 10

Statewide there are 796 schools in Decile 10. Less than 5 percent of the state’s schools are in SCC, but they make up 10 percent of the State’s Decile 10 schools.

Summary of Results for SCC Schools

- Seventeen percent of SCC schools (58 of 346) fall in Decile 1-3, compared to 21 percent in 2002 (76 of 359) (*Figure 6*).
- Elementary and middle schools have made significant growth in Base API medians from the 2000 Base API to the 2007 Base API. Elementary schools have gained 52 points and middle schools 61 points, while high schools have dropped eight points (*Figure 7*).
- There continues to be a gap between White, Asian and Filipino performance compared to the other subgroups. The median APIs for Asian (912), White (869) and Filipino (803) students are significantly higher than those for English Learner (713), Socioeconomically Disadvantaged (698), Hispanic (688), African American (686) and Students with Disabilities (532) (*Figure 8*).

<u>Three Top Performing SCC Districts</u>	API
1. Los Altos Elementary	954
2. Saratoga Union Elementary	953
3. Cupertino Union	930

Three Top Performing SCC Schools by Level

Elementary schools	District	API
1. Faria (William) Elementary	Cupertino Union	995
2. Millikin Elementary	Santa Clara Unified	994
3. Murdock-Portal Elementary	Cupertino Union	988
Middle schools	District	API
1. Egan (Ardis G.) Intermediate	Los Altos Elementary	958
2. Kennedy (John F.) Middle	Cupertino Union	957
3. Miller (Joaquin) Middle	Cupertino Union	957
High Schools	District	API
1. Lynbrook High	Fremont Union High	911
2. Saratoga High	Los Gatos-Saratoga Union	903
3. Monta Vista High	Fremont Union High	900

Santa Clara County Districts with API Scores Over 800

District	2007 Base API
Los Altos Elementary	954
Saratoga Union Elementary	953
Cupertino Union School	930
Lakeside Joint Elementary	924
Palo Alto Unified	910
Loma Prieta Joint Union Elementary	909
Los Gatos Union Elementary	888
Los Gatos-Saratoga Joint Union High	872
Cambrian Elementary	853
Union Elementary	850
Fremont Union High	840
Evergreen Elementary	833
Moreland Elementary	818
Mountain View-Los Altos Union High	812

Santa Clara County Schools Ranked in 10th Decile in Statewide and Similar Schools Ranks

School	District	2007 Base API
Faria (William) Elementary	Cupertino Union School	995
Millikin Elementary	Santa Clara Unified	994
Murdock-Portal Elementary	Cupertino Union School	988
Hoover (Herbert) Elementary	Palo Alto Unified	981
Dilworth (Nelson S.) Elementary	Cupertino Union School	979
Regnart (William) Elementary	Cupertino Union School	973
Loyola Elementary	Los Altos Elementary	972
Bullis Charter School	Santa Clara County Office of Education	968
Egan (Ardis G.) Intermediate	Los Altos Elementary	958
Kennedy (John F.) Middle	Cupertino Union School	957
Miller (Joaquin) Middle	Cupertino Union School	957
Lawson (Sam H.) Middle	Cupertino Union School	954
Redwood Middle	Saratoga Union Elementary	951
Silver Oak Elementary	Evergreen Elementary	950
Blach (Georgina P.) Intermediate	Los Altos Elementary	950
Addison Elementary	Palo Alto Unified	948
Hays (Walter) Elementary	Palo Alto Unified	936
El Carmelo Elementary	Palo Alto Unified	933
KIPP Heartwood Academy	Alum Rock Union Elementary	912
Lynbrook High	Fremont Union High	911
Saratoga High	Los Gatos-Saratoga Joint Union High	903
Sartorette Charter	Cambrian Elementary	898

SCC 2007 Base API Statewide Decile Rank Percentages

Decile Ranks	Schools	Percent
Deciles 9 & 10	124	35.8%
Deciles 7 & 8	66	19.1%
Deciles 5 & 6	72	20.8%
Deciles 3 & 4	54	15.6%
Deciles 1 & 2	30	8.7%
Total	346	100%

Change in SCC Statewide Decile Ranks from 2006 Base API to 2007 Base API

Change in Decile Rank	Schools	Percent
Increased by one or more deciles	62	18.2%
Stayed the same	196	57.5%
Decreased by one or more deciles	83	24.3%
Total	341	100%

SCC 2007 Base API Similar Schools Rank Decile Percentages

Decile Ranks	Schools	Percent
Deciles 9 & 10	61	18.1%
Deciles 7 & 8	64	19.0%
Deciles 5 & 6	67	19.9%
Deciles 3 & 4	65	19.3%
Deciles 1 & 2	80	23.7%
Total	337	100%

Change in SCC Similar Schools Decile Ranks from 2006 Base API to 2007 Base API

Change in Decile Rank	Schools	Percent
Increased by three or more deciles	28	8.4%
Increased by one or two deciles	83	25.0%
Stayed the same	86	25.9%
Decreased by one or two deciles	92	27.7%
Decreased by three or more deciles	43	13.0%
Total	332	100%

SCC Charter and Small Schools with API Scores Over 800

School	District	2007 Base API
Bullis Charter School	Santa Clara County Office of Education	968
Lexington Elementary	Los Gatos Union Elementary	939
Lakeside Elementary	Lakeside Joint Elementary	933
Discovery Charter	Santa Clara County Office of Ed.	919
KIPP Heartwood Academy	Alum Rock Union Elementary	912
Sartorette Charter	Cambrian Elementary	898
Fammatre Charter	Cambrian Elementary	888
Rolling Hills Middle	Campbell Union Elementary	859
Charter School of Morgan Hill	Morgan Hill Unified	851
Village School	Campbell Union Elementary	849
Capri Elementary	Campbell Union Elementary	838
Price Charter Middle	Cambrian Elementary	832
Farnham Charter	Cambrian Elementary	819

Schools That Did Not Receive a 2007 Base API Score

School	District	Flag
McAuliffe (Christa) Elementary	Cupertino Union School	1
Berryessa Union Elementary	Berryessa Union Elementary	4
Cambrian Community	Cambrian Elementary	4
Community Day	Campbell Union Elementary	4
Camden Community Day	Campbell Union High	4
Escuela Popular/Center for Training and	East Side Union High	4
Community Day	Fremont Union High	4
Milpitas Community Day	Milpitas Unified	4
Packard Children's Hospital/Stanford	Palo Alto Unified	4
Community Career Academy (Continuation)	San Jose Unified	4
Gunderson Plus (Continuation)	San Jose Unified	4
Willow Glen Plus (Continuation)	San Jose Unified	4
Alternative Placement Academy	Santa Clara County Office of Education	4
Foundry County Community Day	Santa Clara County Office of Education	4
Pathfinder High	Santa Clara County Office of Education	4
Santa Clara County Juvenile Hall	Santa Clara County Office of Education	4
Adair Community Day	Sunnyvale Elementary	4
San Jose Conservation Corps Charter	East Side Union High	6
Los Gatos-Saratoga JUHSD Adult Education	Los Gatos-Saratoga Joint Union High	6

Flag Value	Flag Definition
1	The school's proportion of students excused at parent request compared to its Standardized Testing and Reporting (STAR) program enrollment on the first day of testing is equal to or greater than 10 percent. When a school's proportion of parental waivers is equal to or greater than 10 but less than 20 percent, the California Department of Education conducts standard statistical tests to check whether the pupils tested at the school were representative of the entire school's population. This school failed the statistical test or its proportion of parental waivers in 2007 was 20 percent or greater, therefore, the school does not have a valid 2007 API Base.
2	This school (or the district on behalf of the school) has certified to the California Department of Education that an irregularity in testing procedure occurred during the Spring 2007 STAR testing affecting 5 percent or more of pupils tested. Therefore, a 2007 API Base is not reported for this school.
3	2007 Base API cannot be reported because for at least one STAR content area used in API calculations, this school failed to test a significant portion of students who were not exempt from testing in 2007.
4	In 2007, this school had fewer than 11 valid STAR test scores.
5	2007 Base API is not reported for this school because CDE is currently reviewing the 2007 STAR or CAHSEE results. CDE will either publish the API for this school or provide a specific reason for invalidating the API when the investigation is complete.
6	School has California High School Exit Exam (CAHSEE) results but no valid STAR results.
7	This school is currently changing data. Their API is scheduled for release in June 2008.

Figure 1

**Santa Clara County Schools' Median Base API vs. California Base API
2000 to 2007 All Students**

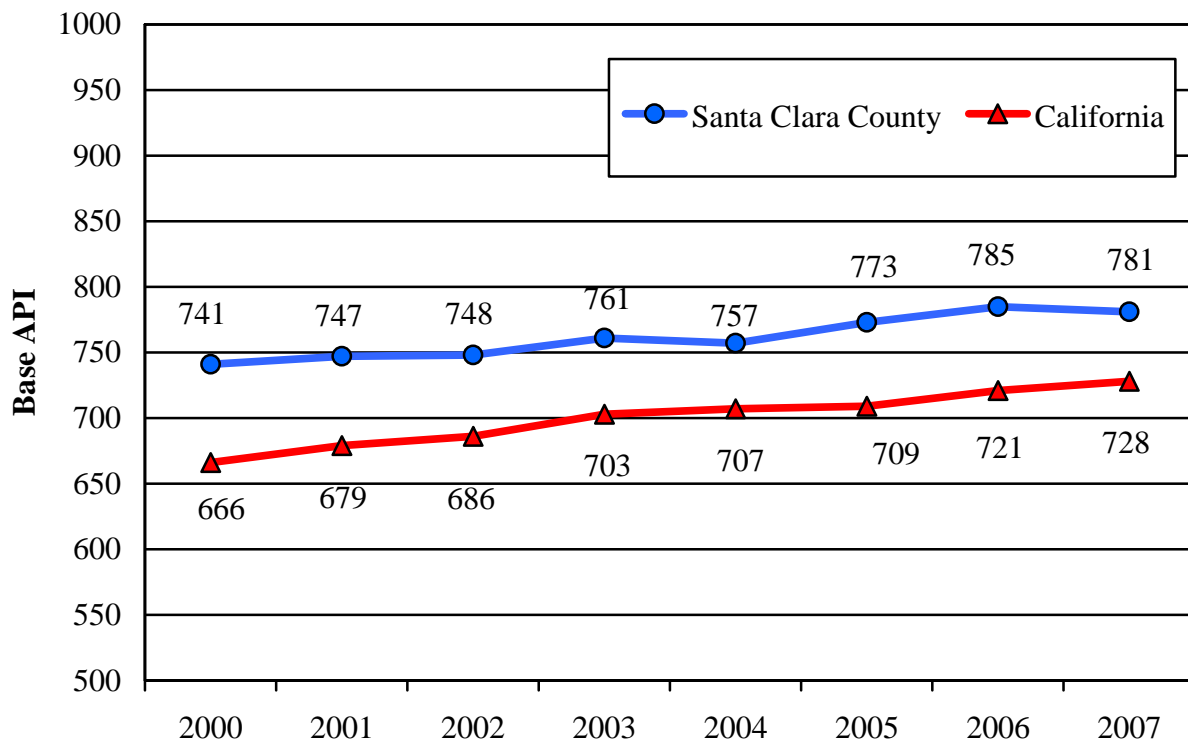
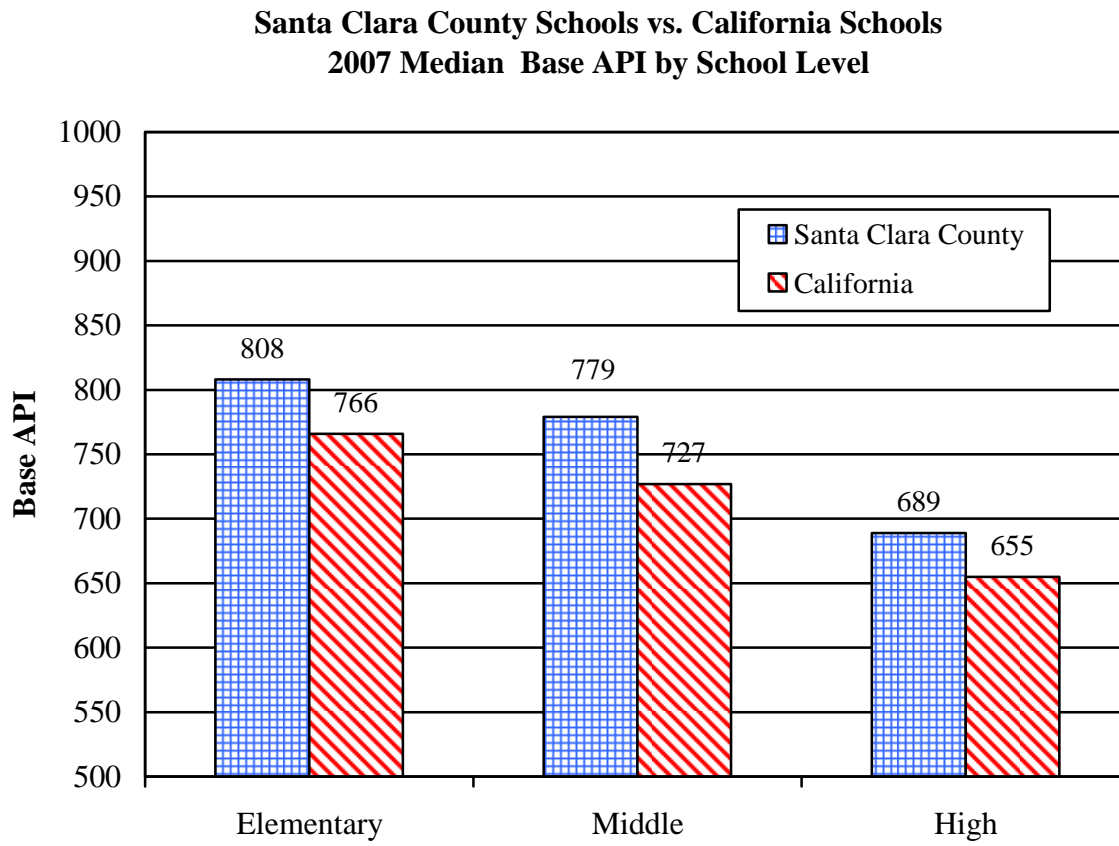


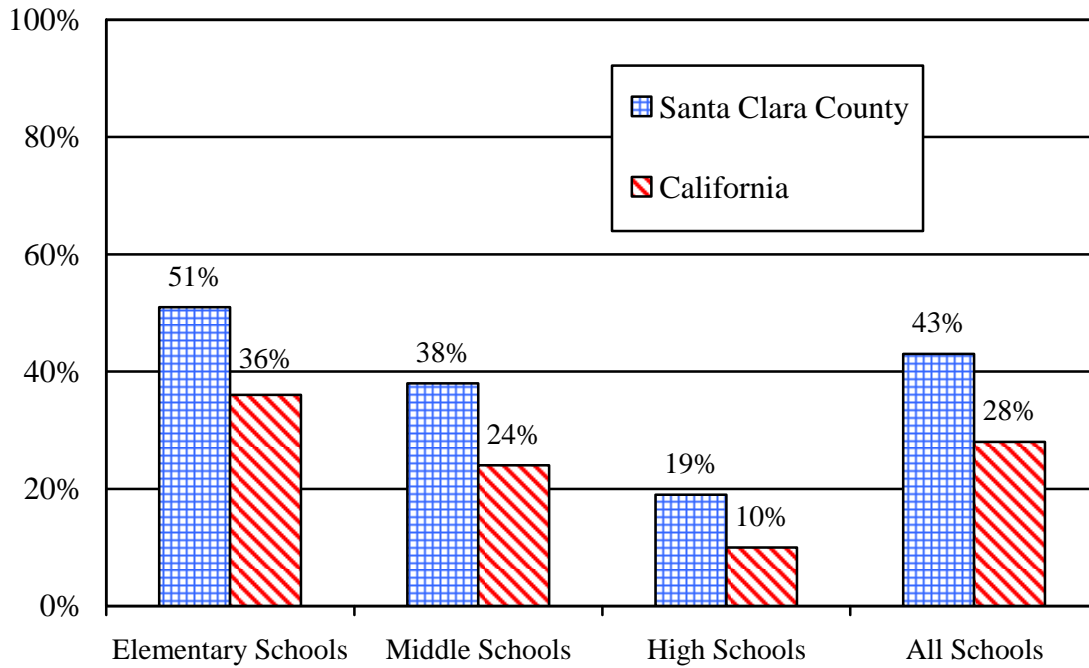
Figure 2



* The California API by School Level figures calculations are based on Median School APIs.

Figure 3

**Percent of Santa Clara County vs. California Schools At or Above
 2007 Base API Performance Target of 800 by School Level**



Number of Schools At or Above 800				
	Santa Clara County		California	
	800+ API	Total Schools	800+ API	Total Schools
Elementary Schools	122	240	2,049	5,703
Middle Schools	23	61	321	1,346
High Schools	13	68	182	1,912
All Schools	158	369	2,552	8,961

Figure 4

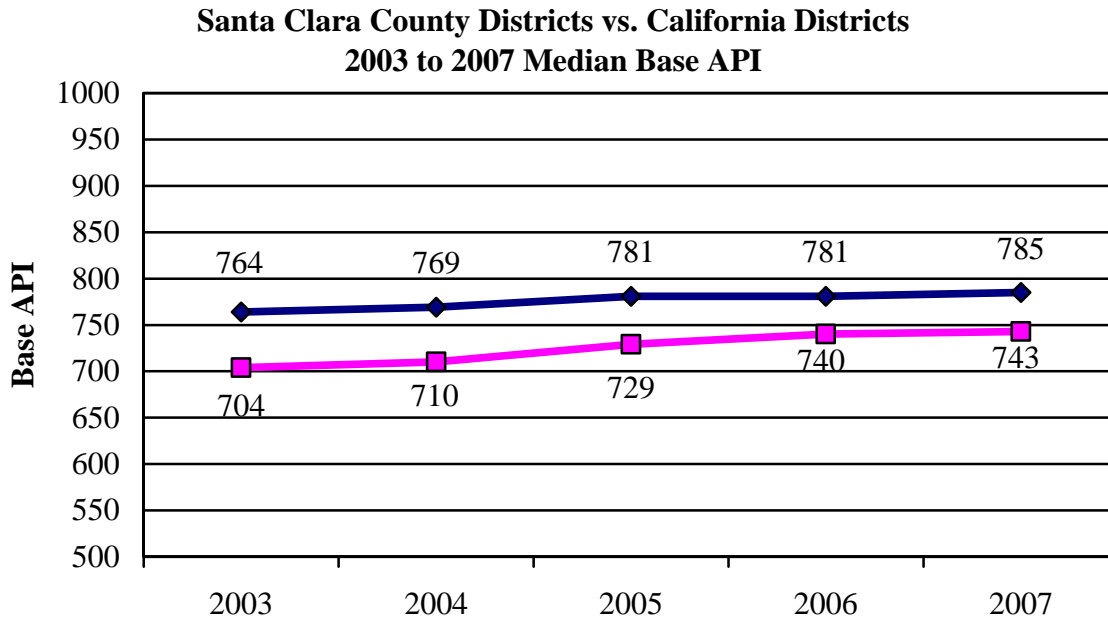
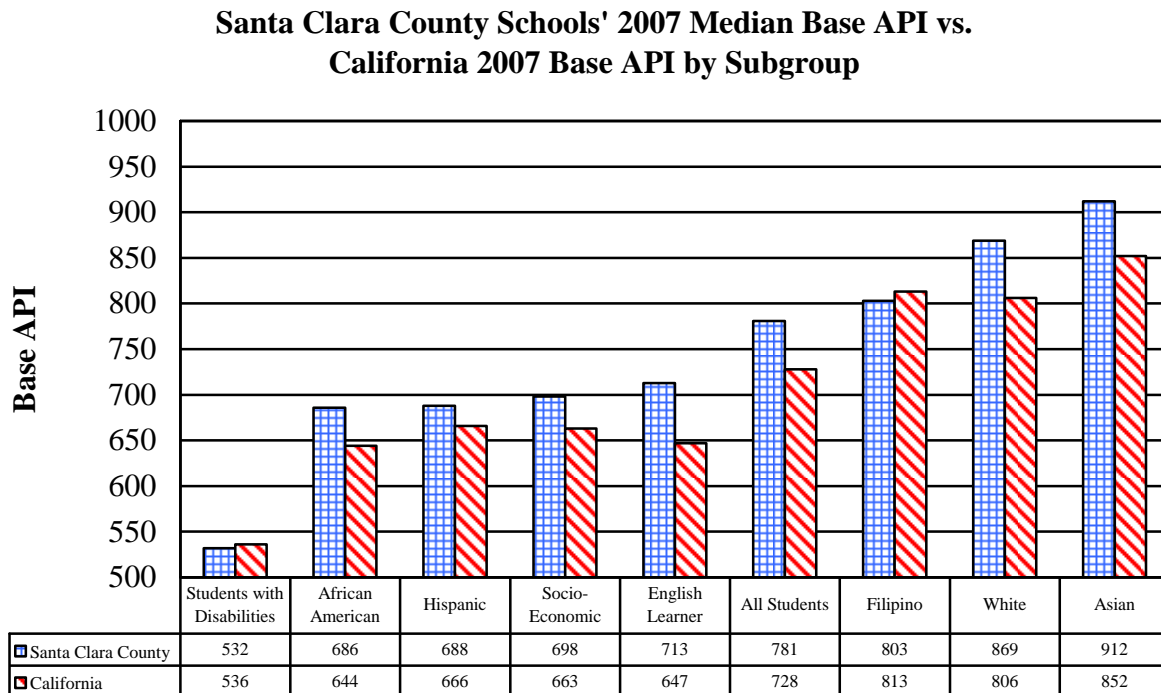


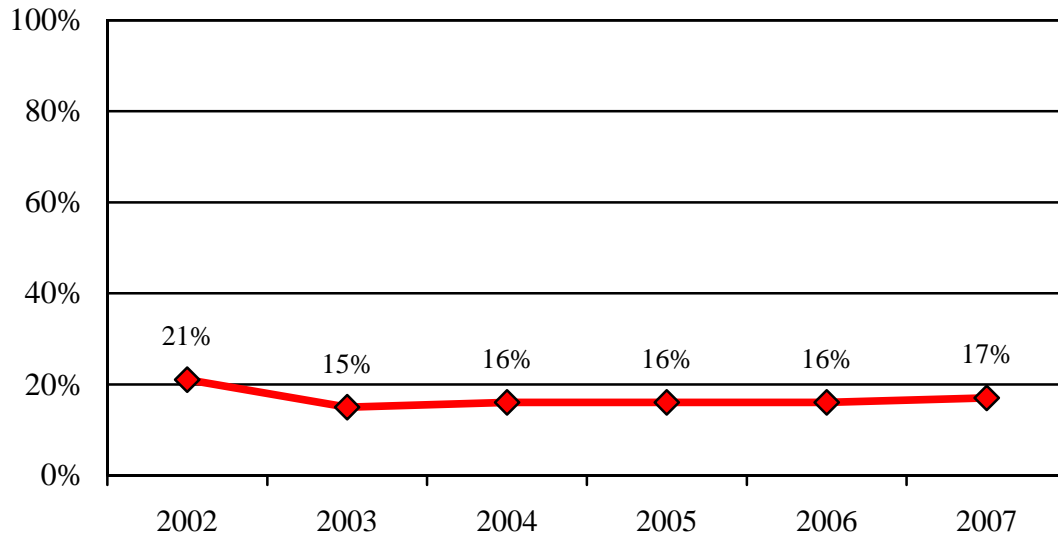
Figure 5



* African American Students are numerically significant in only one school.

Figure 6

**Percent of Santa Clara County Schools
 Decile Ranks 1, 2 or 3: 2002 - 2007 Median Base API**



	2002	2003	2004	2005	2006	2007
Schools 1 - 3	76	52	54	56	55	58
Total Schools*	359	336	344	345	345	346

* Those schools that were not ranked, were not included in this calculation

Figure 7

**Santa Clara County Schools' 2000 - 2007 Median Base API
 by School Level**

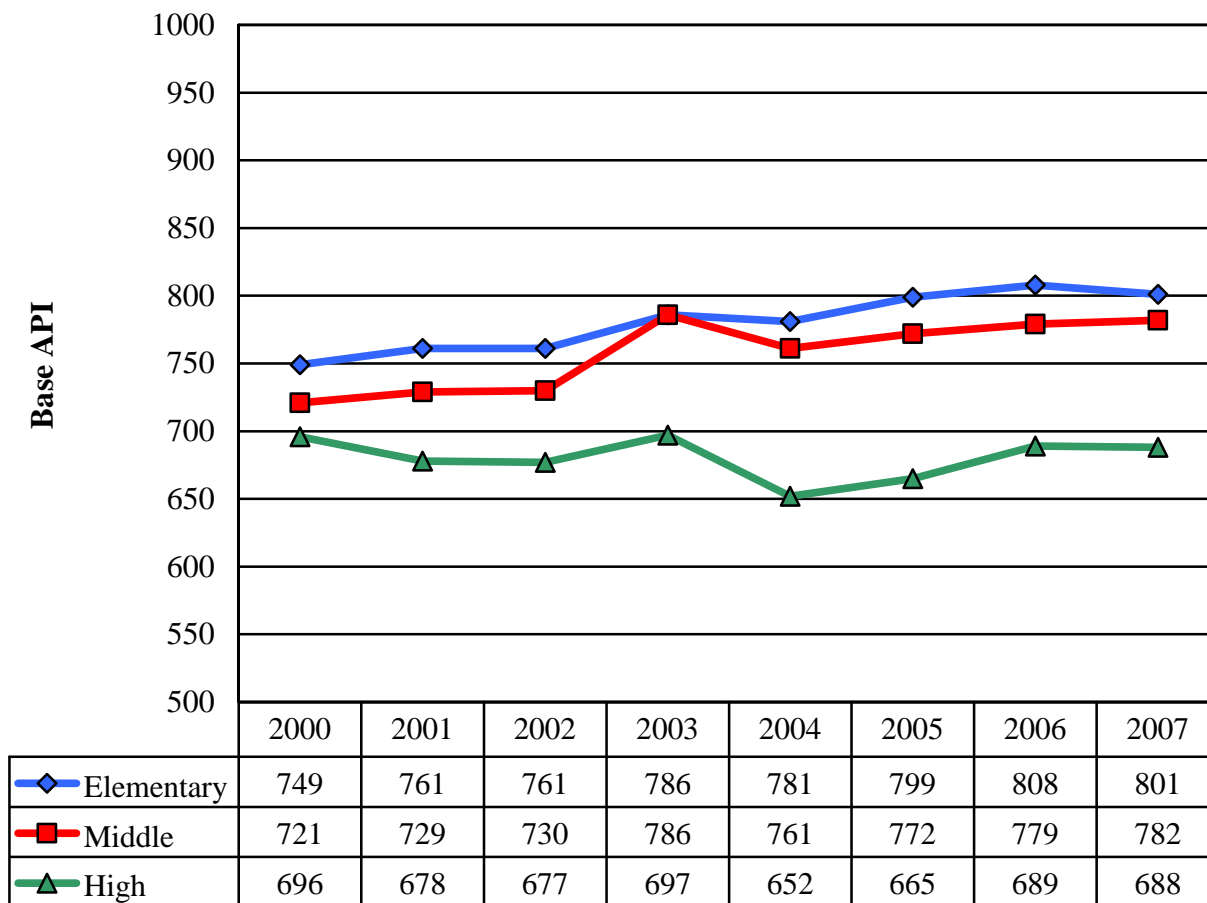
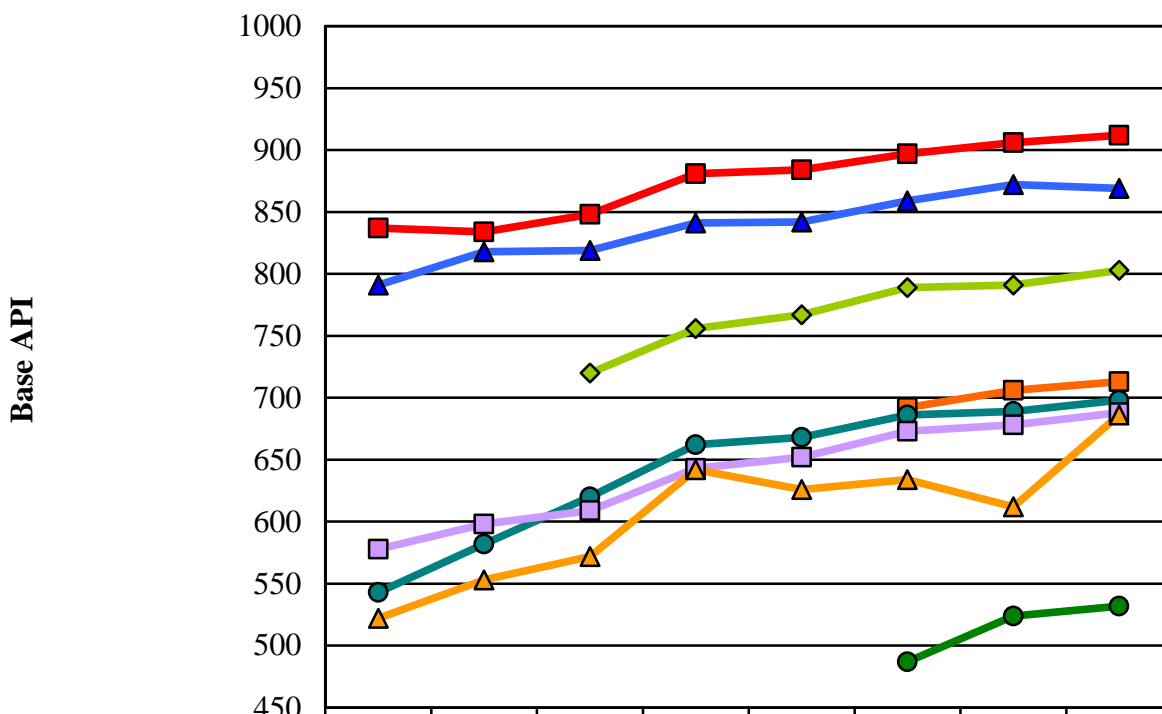


Figure 8

**Santa Clara County Schools' 1999 - 2007 Median Base API
 by Subgroup**



	2000	2001	2002	2003	2004	2005	2006	2007
Asian	837	834	848	881	884	897	906	912
White	791	818	819	841	842	859	872	869
Filipino			720	756	767	789	791	803
English Learner						692	706	713
Socioeconomically Disadvantaged	543	582	620	662	668	686	689	698
Hispanic	578	598	609	643	652	673	678	688
African American	522	553	572	642	626	634	612	686
Students with Disabilities						487	524	532

* African American Students are numerically significant in only one school.

All Santa Clara County Schools with 2006 API Over 800

School	District	2007 Base API
Faria (William) Elementary	Cupertino Union	995
Millikin Elementary	Santa Clara Unified	994
Murdock-Portal Elementary	Cupertino Union	988
Hoover (Herbert) Elementary	Palo Alto Unified	981
Dilworth (Nelson S.) Elementary	Cupertino Union	979
Regnart (William) Elementary	Cupertino Union	973
Loyola Elementary	Los Altos Elementary	972
Oak Avenue Elementary	Los Altos Elementary	969
Argonaut Elementary	Saratoga Union Elementary	969
Bullis Charter School	Santa Clara County Office of Education	968
Blue Hills Elementary	Cupertino Union	964
Almond Elementary	Los Altos Elementary	964
Garden Gate Elementary	Cupertino Union	963
Lincoln (Abraham) Elementary	Cupertino Union	962
Egan (Ardis G.) Intermediate	Los Altos Elementary	958
Kennedy (John F.) Middle	Cupertino Union	957
Miller (Joaquin) Middle	Cupertino Union	957
Collins (L. P.) Elementary	Cupertino Union	954
Lawson (Sam H.) Middle	Cupertino Union	954
Santa Rita Elementary	Los Altos Elementary	952
Saratoga Elementary	Saratoga Union Elementary	952
Montclair Elementary	Cupertino Union	951
Williams Elementary	San Jose Unified	951
Redwood Middle	Saratoga Union Elementary	951
Silver Oak Elementary	Evergreen Elementary	950
Blach (Georgina P.) Intermediate	Los Altos Elementary	950
Matsumoto (Tom) Elementary	Evergreen Elementary	949
Springer Elementary	Los Altos Elementary	948
Addison Elementary	Palo Alto Unified	948
Stockmeir (Louis V.) Elementary	Cupertino Union	946
Duveneck Elementary	Palo Alto Unified	946
Foothill Elementary	Saratoga Union Elementary	945
Meyerholz (R. I.) Elementary	Cupertino Union	942
Stevens Creek Elementary	Cupertino Union	942

School	District	2007 Base API
Nixon (Lucille M.) Elementary	Palo Alto Unified	941
Eaton (C. B.) Elementary	Cupertino Union	940
Terman Middle	Palo Alto Unified	940
West Valley Elementary	Cupertino Union	939
Lexington Elementary	Los Gatos Union Elementary	939
Smith (James Franklin) Elementary	Evergreen Elementary	936
Hays (Walter) Elementary	Palo Alto Unified	936
Lakeside Elementary	Lakeside Joint Elementary	933
El Carmelo Elementary	Palo Alto Unified	933
Graystone Elementary	San Jose Unified	930
Covington Elementary	Los Altos Elementary	928
Guadalupe Elementary	Union Elementary	926
English (C. T.) Middle	Loma Prieta Joint Union Elementary	923
Fairmeadow Elementary	Palo Alto Unified	923
Jordan (David Starr) Middle	Palo Alto Unified	923
Palo Verde Elementary	Palo Alto Unified	919
Discovery Charter	Santa Clara County Office of Ed.	919
Blossom Hill Elementary	Los Gatos Union Elementary	918
Simonds Elementary	San Jose Unified	918
Clark (Carolyn A.) Elementary	Evergreen Elementary	914
KIPP Heartwood Academy	Alum Rock Union Elementary	912
Lynbrook High	Fremont Union High	911
Stanford (Jane Lathrop) Middle	Palo Alto Unified	907
Muir (John) Elementary	Cupertino Union School	906
Huff (Frank L.) Elementary	Mountain View-Whisman Elementary	906
Ohlone Elementary	Palo Alto Unified	904
Harte (Bret) Middle	San Jose Unified	904
Saratoga High	Los Gatos-Saratoga Joint Union High	903
Evergreen Elementary	Evergreen Elementary	901
Monta Vista High	Fremont Union High	900
Escondido Elementary	Palo Alto Unified	900
Cupertino Middle	Cupertino Union	899
Country Lane Elementary	Moreland Elementary	899
Gunn (Henry M.) High	Palo Alto Unified	899
Los Alamitos Elementary	San Jose Unified	899

School	District	2007 Base API
Sartorette Charter	Cambrian Elementary	898
Cherry Chase Elementary	Sunnyvale Elementary	897
Cumberland Elementary	Sunnyvale Elementary	897
Marshall Lane Elementary	Campbell Union Elementary	895
Eisenhower (Dwight D.) Elementary	Cupertino Union	894
Loma Prieta Elementary	Loma Prieta Joint Union Elementary	894
Bagby Elementary	Cambrian Elementary	892
Fammatre Charter	Cambrian Elementary	888
Carlton Elementary	Union Elementary	887
Noddin Elementary	Union Elementary	885
Laurelwood Elementary	Santa Clara Unified	884
Alta Vista Elementary	Union Elementary	884
Palo Alto High	Palo Alto Unified	883
Briones (Juana) Elementary	Palo Alto Unified	882
Baker (Gussie M.) Elementary	Moreland Elementary	880
Forest Hill Elementary	Campbell Union Elementary	879
Daves Avenue Elementary	Los Gatos Union Elementary	879
Fisher (Raymond J.) Middle	Los Gatos Union Elementary	879
Louise Van Meter Elementary	Los Gatos Union Elementary	879
Ruskin Elementary	Berryessa Union Elementary	877
Learning in an Urban Community with High	Alum Rock Union Elementary	876
Booksin Elementary	San Jose Unified	876
Nordstrom Elementary	Morgan Hill Unified	868
Sinnott (John) Elementary	Milpitas Unified	866
Bubb (Benjamin) Elementary	Mountain View-Whisman Elementary	866
Sutter Elementary	Santa Clara Unified	865
Pomeroy (Marshall) Elementary	Milpitas Unified	864
Curtner Elementary	Milpitas Unified	861
Rolling Hills Middle	Campbell Union Elementary	859
Sakamoto Elementary	Oak Grove Elementary	859
Washington Elementary	Santa Clara Unified	858
Zanker (Pearl) Elementary	Milpitas Unified	857
Aprea (Luigi) Elementary	Gilroy Unified	856
Leland High	San Jose Unified	856
Oster Elementary	Union Elementary	856

School	District	2007 Base API
Payne (George C.) Elementary	Moreland Elementary	853
Sedgwick (D. J.) Elementary	Cupertino Union	852
Charter School of Morgan Hill	Morgan Hill Unified	851
Los Gatos High	Los Gatos-Saratoga Joint Union High	850
Village School	Campbell Union Elementary	849
Northwood Elementary	Berryessa Union Elementary	848
Barron Park Elementary	Palo Alto Unified	848
Norwood Creek Elementary	Evergreen Elementary	846
Peterson (Marian A.) Middle	Santa Clara Unified	842
Chaboya Middle	Evergreen Elementary	840
Russell (Thomas) Junior High	Milpitas Unified	840
Capri Elementary	Campbell Union Elementary	838
De Vargas (Manuel) Elementary	Cupertino Union School	838
Homestead High	Fremont Union High	838
Taylor (Bertha) Elementary	Oak Grove Elementary	834
Mountain View High	Mountain View-Los Altos Union High	833
Price Charter Middle	Cambrian Elementary	832
Nimitz (Chester W.) Elementary	Cupertino Union School	831
Ponderosa Elementary	Santa Clara Unified	831
Hacienda Science/Environmental Magnet	San Jose Unified	830
Hyde (Warren E.) Middle	Cupertino Union School	829
Millbrook Elementary	Evergreen Elementary	829
Easterbrook Discovery	Moreland Elementary	828
Evergreen Valley High	East Side Union High	827
Carson (Rachel) Elementary	San Jose Unified	827
Cherrywood Elementary	Berryessa Union Elementary	826
Dartmouth Middle	Union Elementary	826
Reed Elementary	San Jose Unified	825
Noble Elementary	Berryessa Union Elementary	824
Cedar Grove Elementary	Evergreen Elementary	824
Laurelwood Elementary	Evergreen Elementary	823
Schallenberger Elementary	San Jose Unified	821
Farnham Charter	Cambrian Elementary	819
Union Middle	Union Elementary	819
Cupertino High	Fremont Union High	817

School	District	2007 Base API
Ledesma (Rita) Elementary	Oak Grove Elementary	817
Ellis Elementary	Sunnyvale Elementary	814
Valle Vista Elementary	Mt. Pleasant Elementary	813
Sierramont Middle	Berryessa Union Elementary	812
Glider Elementary	Oak Grove Elementary	811
Castillero Middle	San Jose Unified	811
Brooktree Elementary	Berryessa Union Elementary	810
Majestic Way Elementary	Berryessa Union Elementary	808
Vinci Park Elementary	Berryessa Union Elementary	807
Parkview Elementary	Oak Grove Elementary	806
Lietz Elementary	Union Elementary	806
Paradise Valley/Machado Elementary	Morgan Hill Unified	805
Summerdale Elementary	Berryessa Union Elementary	804
Leigh High	Campbell Union High	803
Los Altos High	Mountain View-Los Altos Union High	802
Oak Ridge Elementary	Oak Grove Elementary	802
Los Paseos Elementary	Morgan Hill Unified	801
Braly Elementary	Santa Clara Unified	801
Whaley (O. B.) Elementary	Evergreen Elementary	800