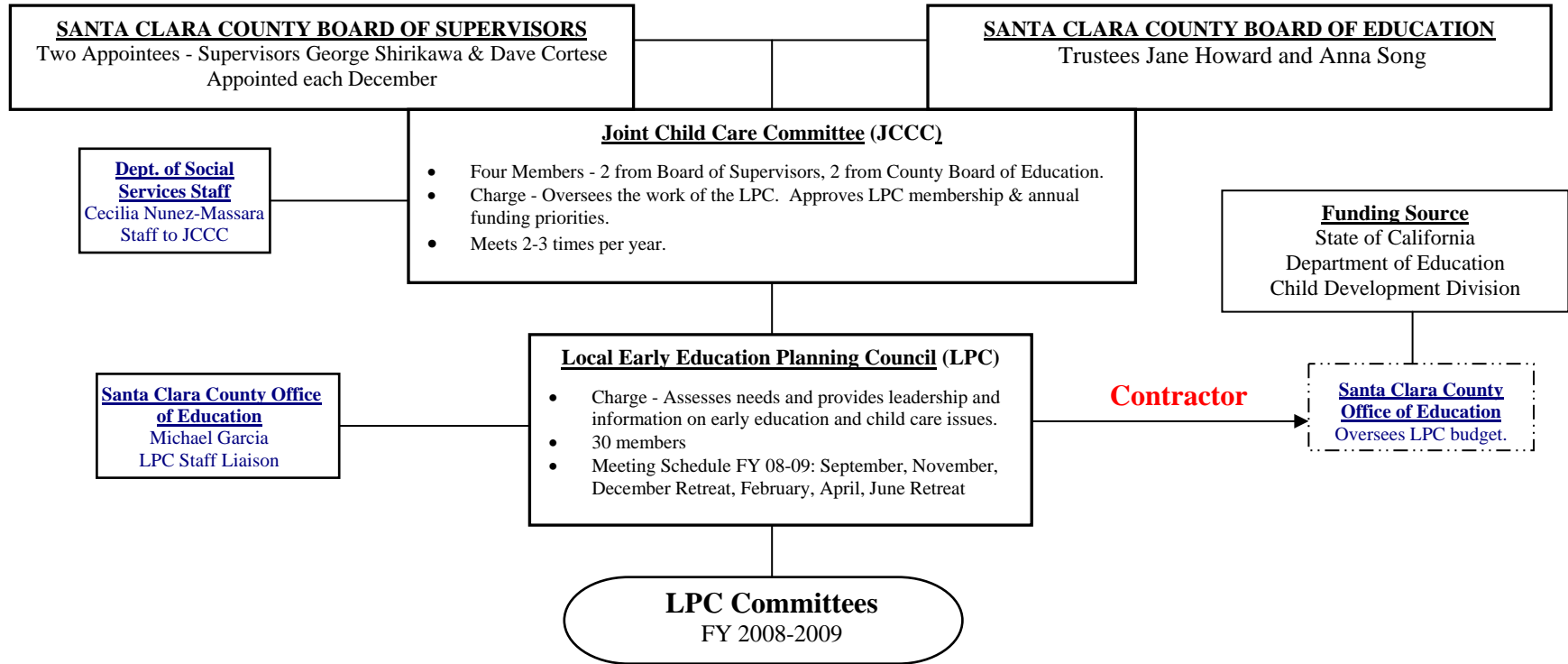




Funding is provided through a contract with the State of California, Department of Education-Child Development Division

LOCAL EARLY EDUCATION PLANNING COUNCIL (LPC)



INCLUSION COLLABORATIVE
Will monitor and report on the implementation of the Inclusion Collaborative.

LEGISLATIVE & ADVOCACY
Inform and assist the LPC and community on public policy issues affecting children. Will work with neighboring LPC's and community organization on a forum on public policy and budget issues.

MEMBERSHIP & SUPPORT
Will support membership through the development of an orientation process for new members, a membership packet, and new member nominations. Will also recommend LPC Bylaw changes.

SCHOOL READINESS
To define and determine the LPC's role in moving forward a school readiness agenda and to link with existing initiatives.

EIR AD-HOC
Will research and update the Child Care Economic Impact Report for Santa Clara County