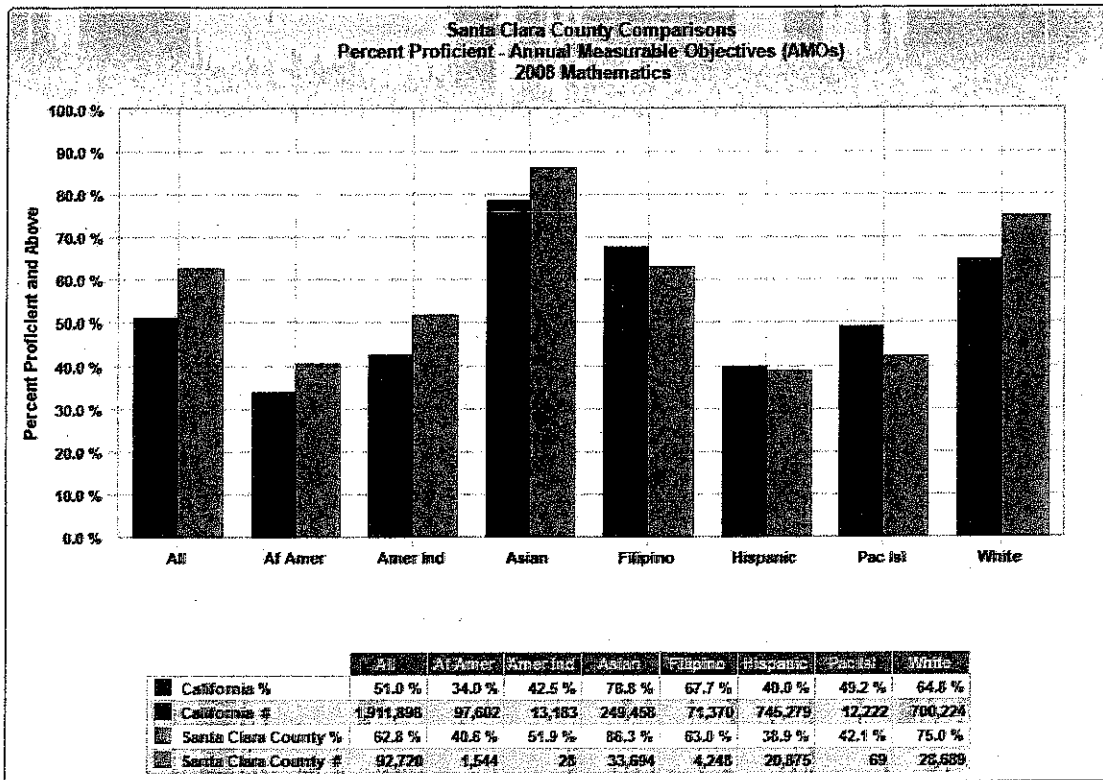
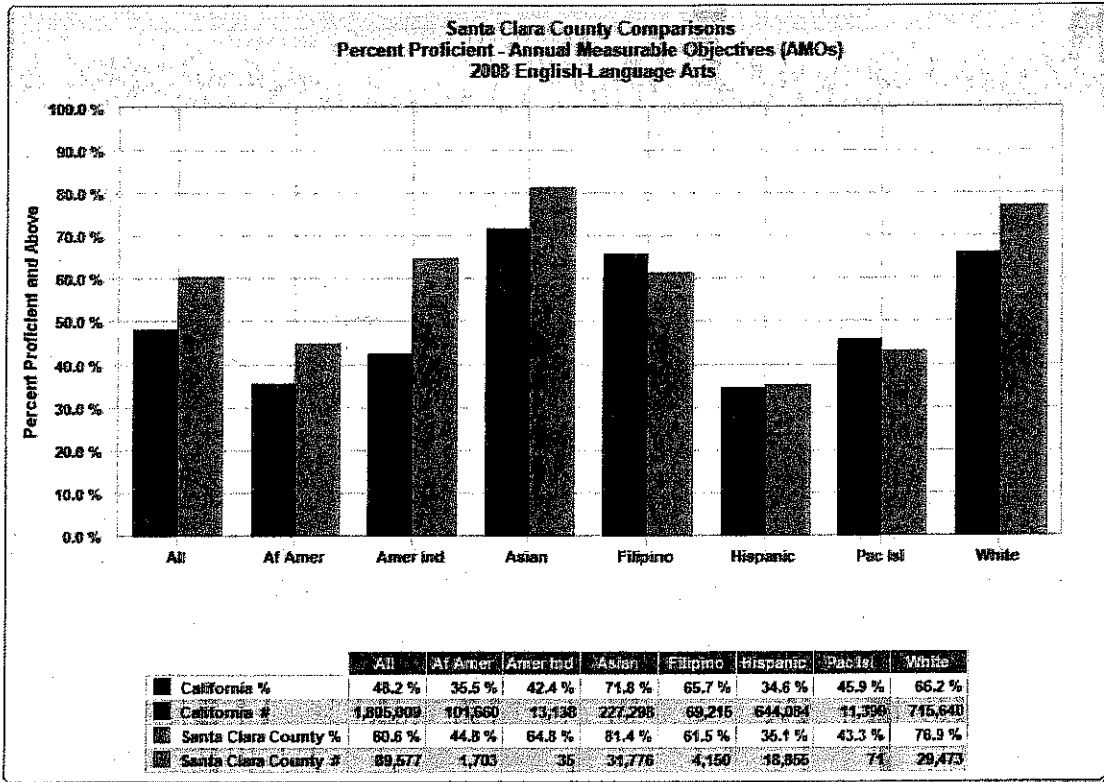
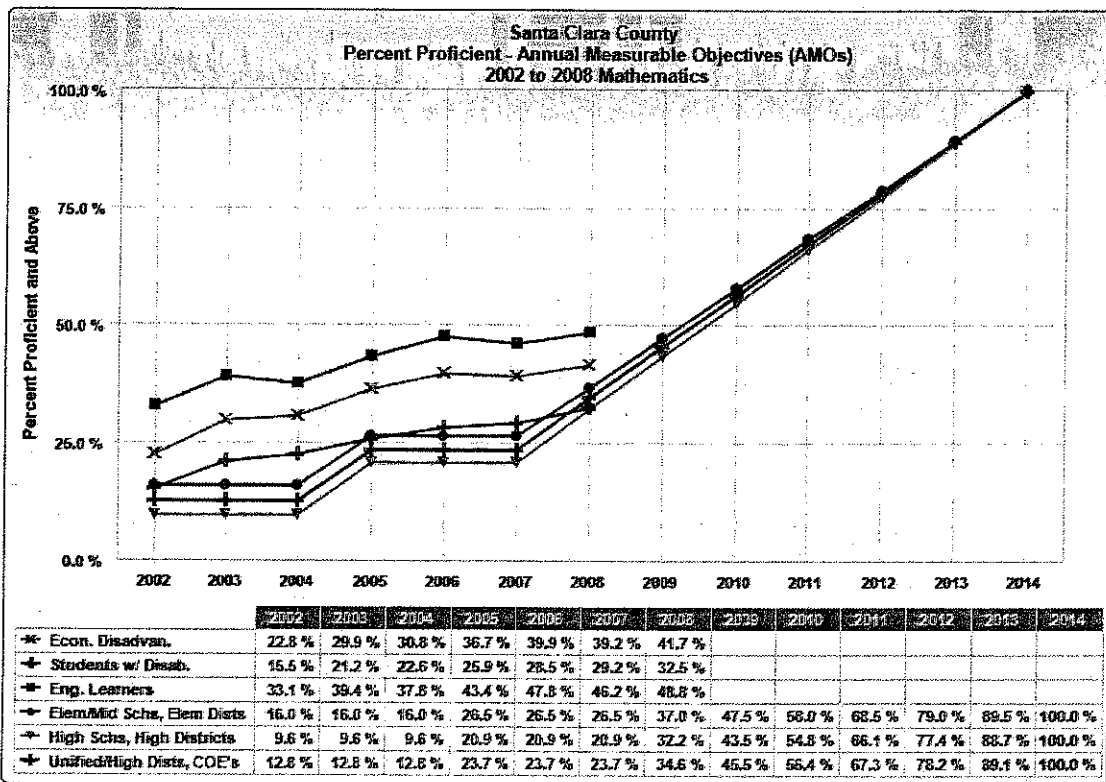
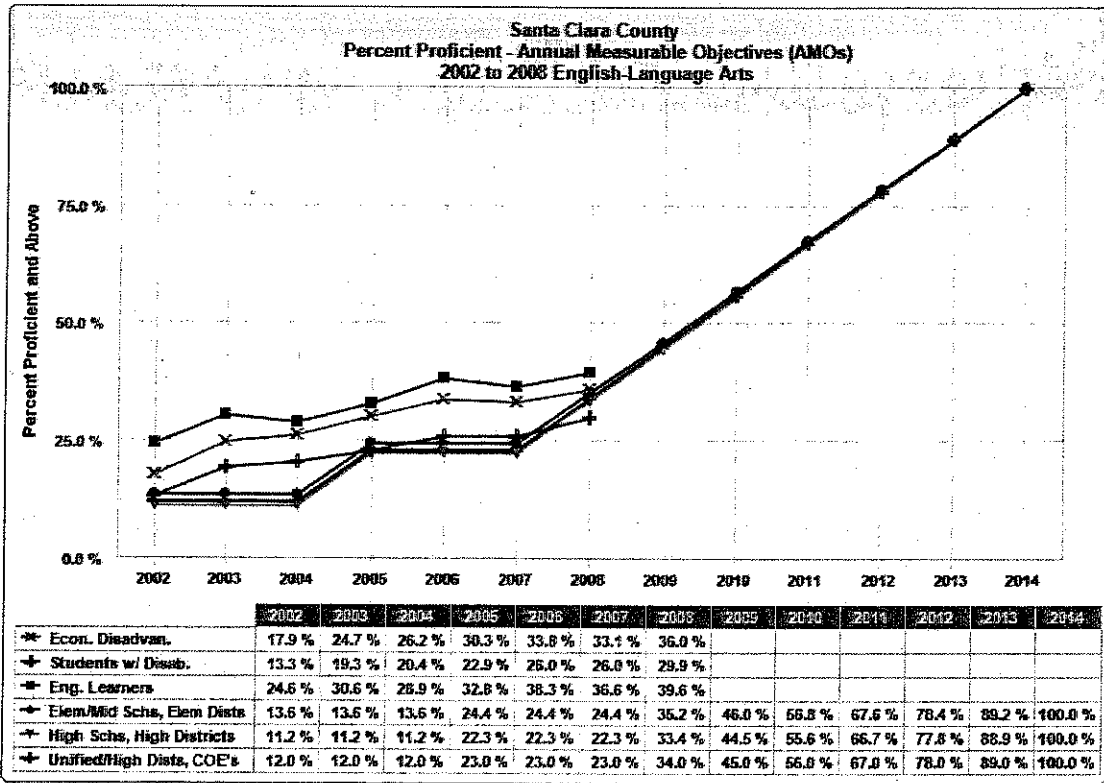


Save as pdf

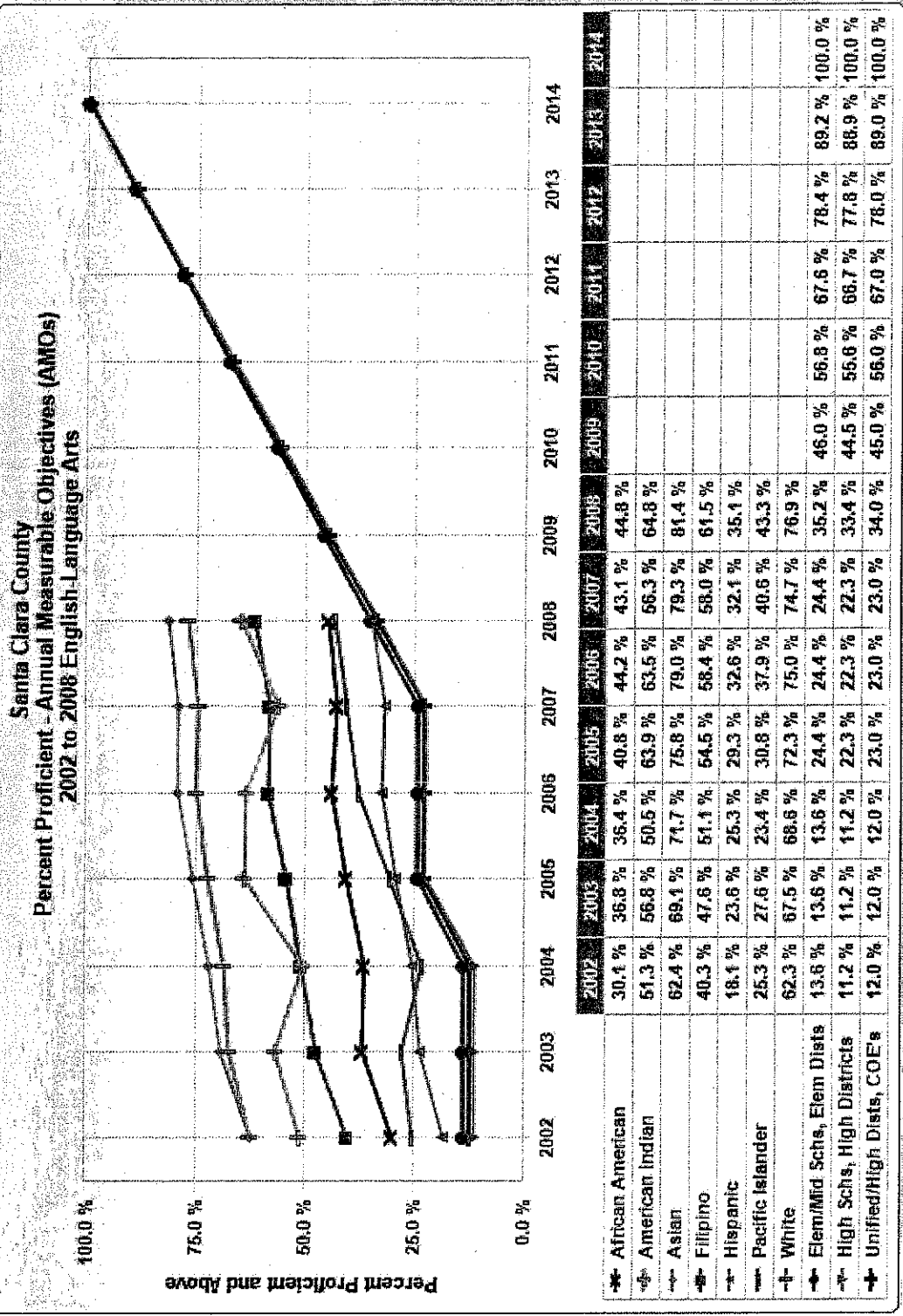


Save as pdf

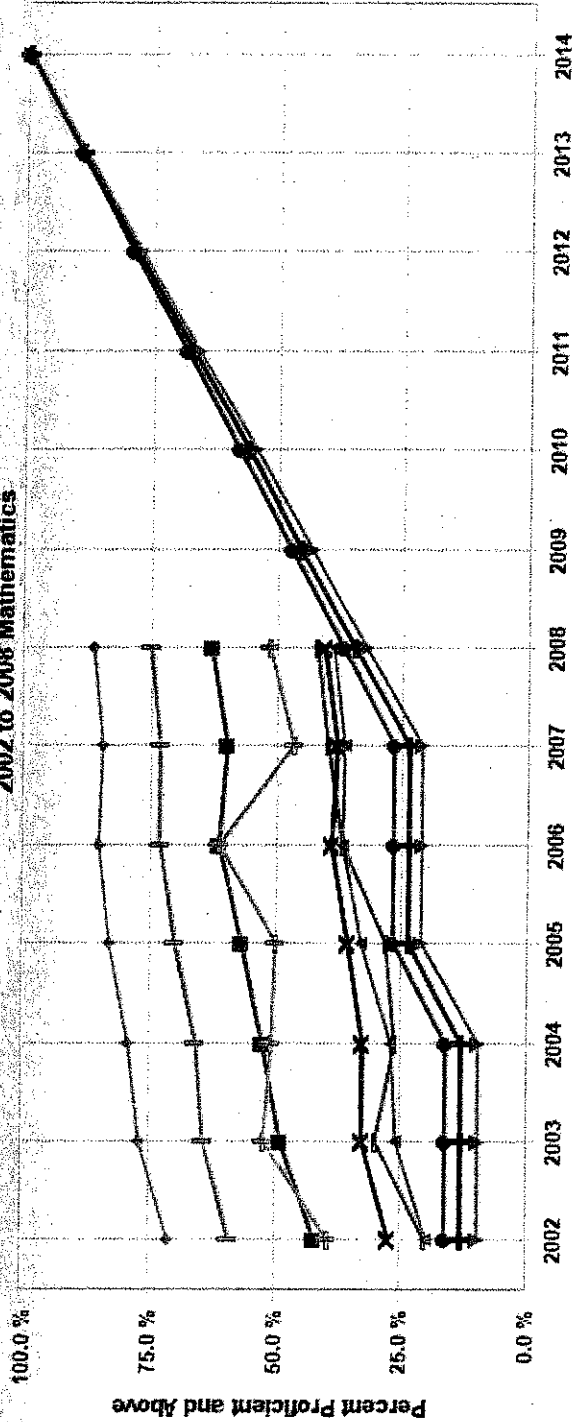


To be considered numerically significant for the API and AYP and to be accountable for meeting the AYP Percent Proficient criteria, a subgroup must either: (1) have at least 50 students enrolled or with valid test scores who make up at least 15 percent of the school's enrollment or total valid test scores, or (2) have at least 100 students enrolled or with valid test scores. To protect student confidentiality, results are not shown for a school, LEA, or subgroup if the number of valid scores is 10 or fewer.

- INDICATES THE NUMBER OF STUDENTS WHO MET THE CRITERION.

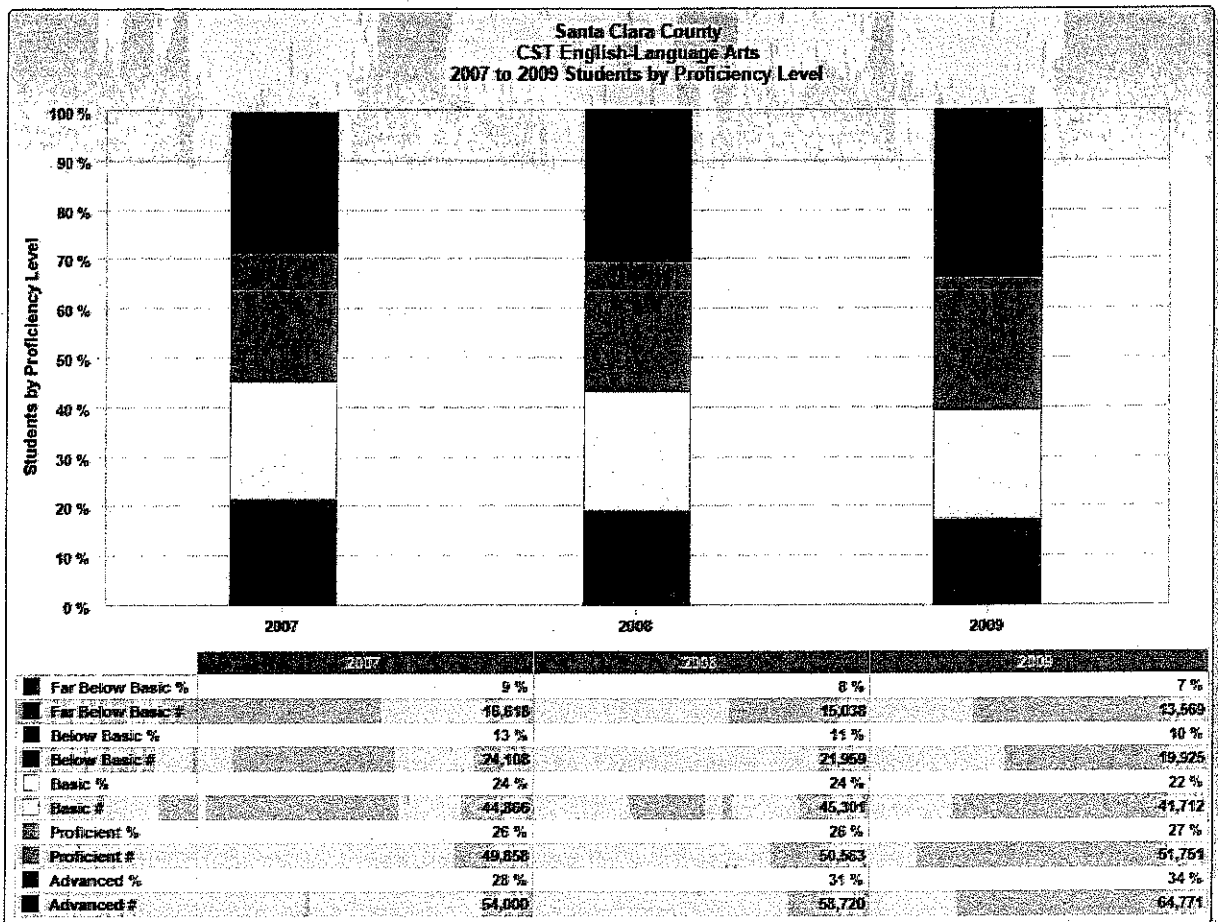
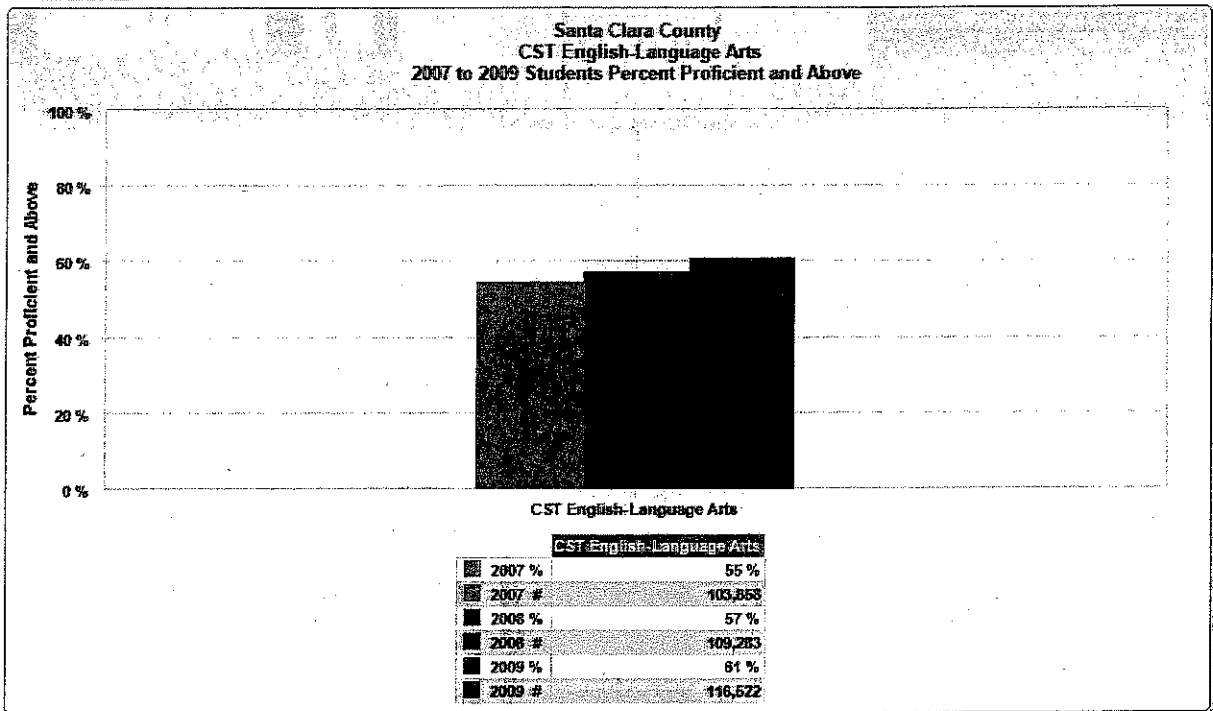


Santa Clara County
 Percent Proficient - Annual Measurable Objectives (AMOs)
 2002 to 2008 Mathematics



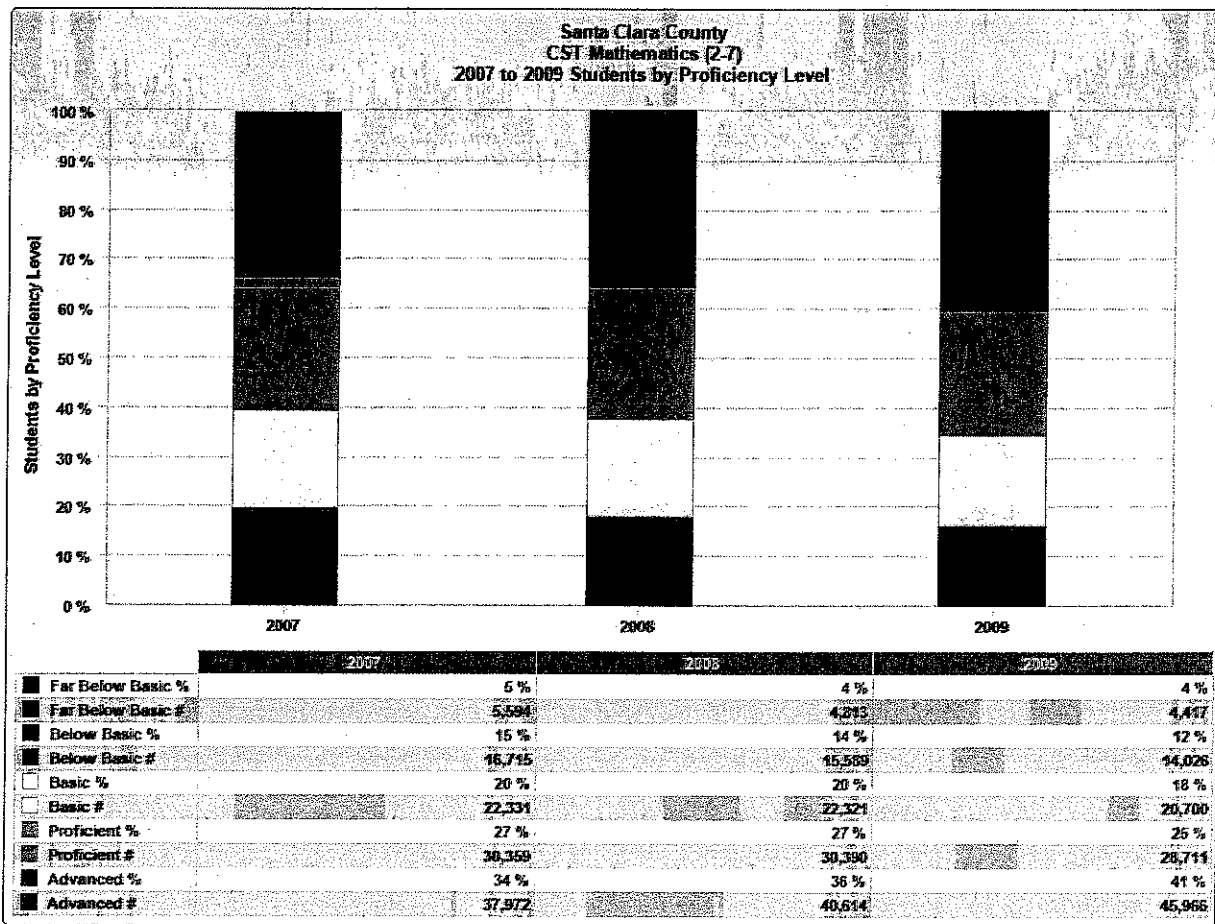
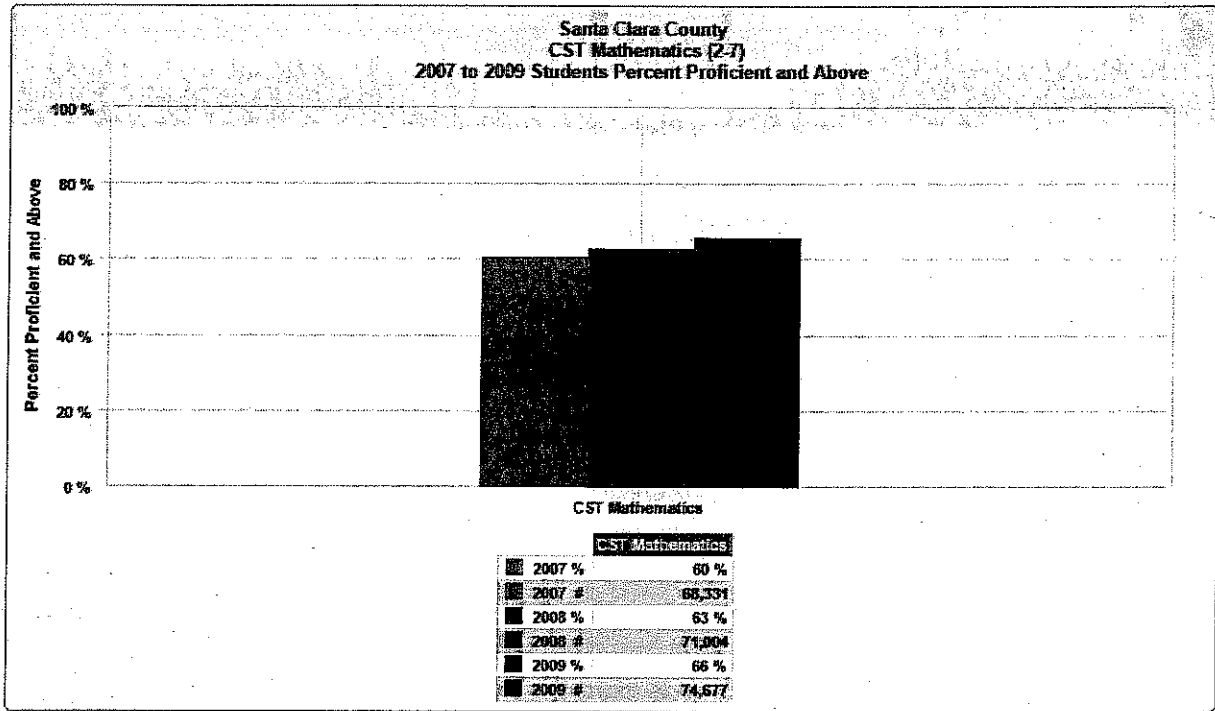
	2002	2003	2004	2005	2006	2007	2008	2009	2010	2011	2012	2013	2014
★ African American	27.4 %	32.6 %	32.6 %	35.7 %	39.3 %	37.9 %	40.6 %						
† American Indian	39.5 %	52.6 %	50.8 %	50.0 %	61.5 %	46.9 %	51.9 %						
→ Asian	71.1 %	77.0 %	79.0 %	82.8 %	85.0 %	84.6 %	86.3 %						
◆ Filipino	42.1 %	49.1 %	52.9 %	57.2 %	61.4 %	60.1 %	63.0 %						
← Hispanic	19.9 %	25.7 %	27.0 %	33.1 %	36.7 %	36.4 %	38.9 %						
▬ Pacific Islander	20.2 %	30.0 %	26.3 %	28.1 %	37.1 %	40.0 %	42.1 %						
⊕ White	59.2 %	64.2 %	65.7 %	70.0 %	73.0 %	72.9 %	75.0 %						
⬆ Elem/Mid Schs, Elem Dists	16.0 %	16.0 %	16.0 %	26.5 %	26.5 %	26.5 %	37.0 %	47.5 %	58.0 %	68.5 %	79.0 %	89.5 %	100.0 %
⬆ High Schs, High Districts	9.6 %	9.6 %	9.6 %	20.9 %	20.9 %	20.9 %	32.2 %	43.5 %	54.8 %	66.1 %	77.4 %	88.7 %	100.0 %
⬆ Unified/High Dists, COE's	12.8 %	12.8 %	12.8 %	23.7 %	23.7 %	23.7 %	34.6 %	45.5 %	56.4 %	67.3 %	78.2 %	89.1 %	100.0 %

Save as pdf



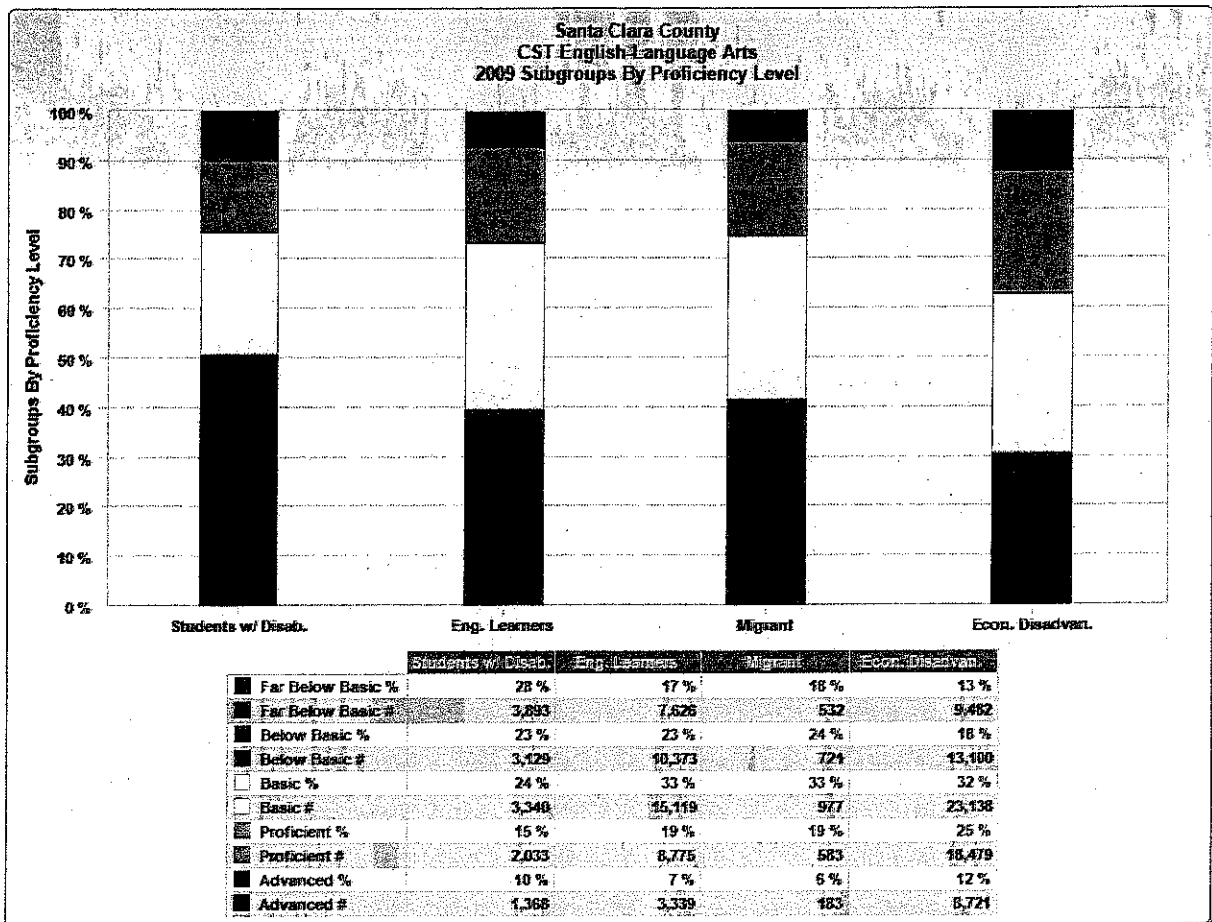
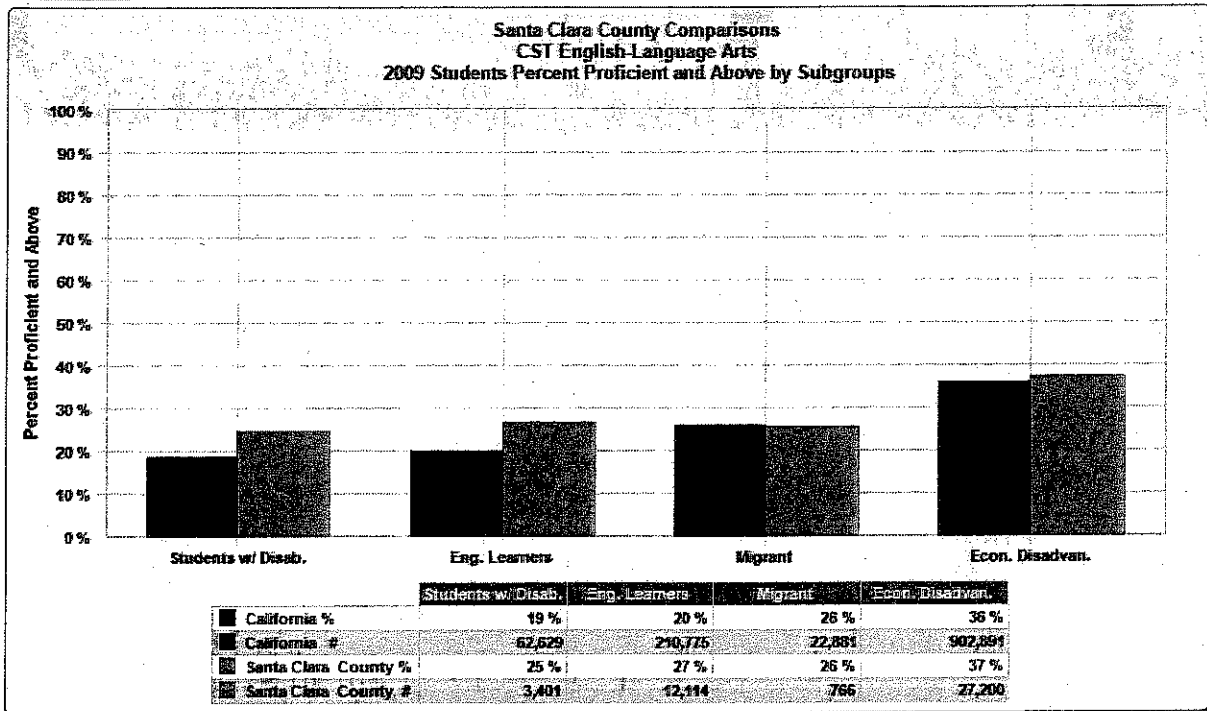
To protect student privacy, results of 10 or fewer students are not reported.

Save as pdf



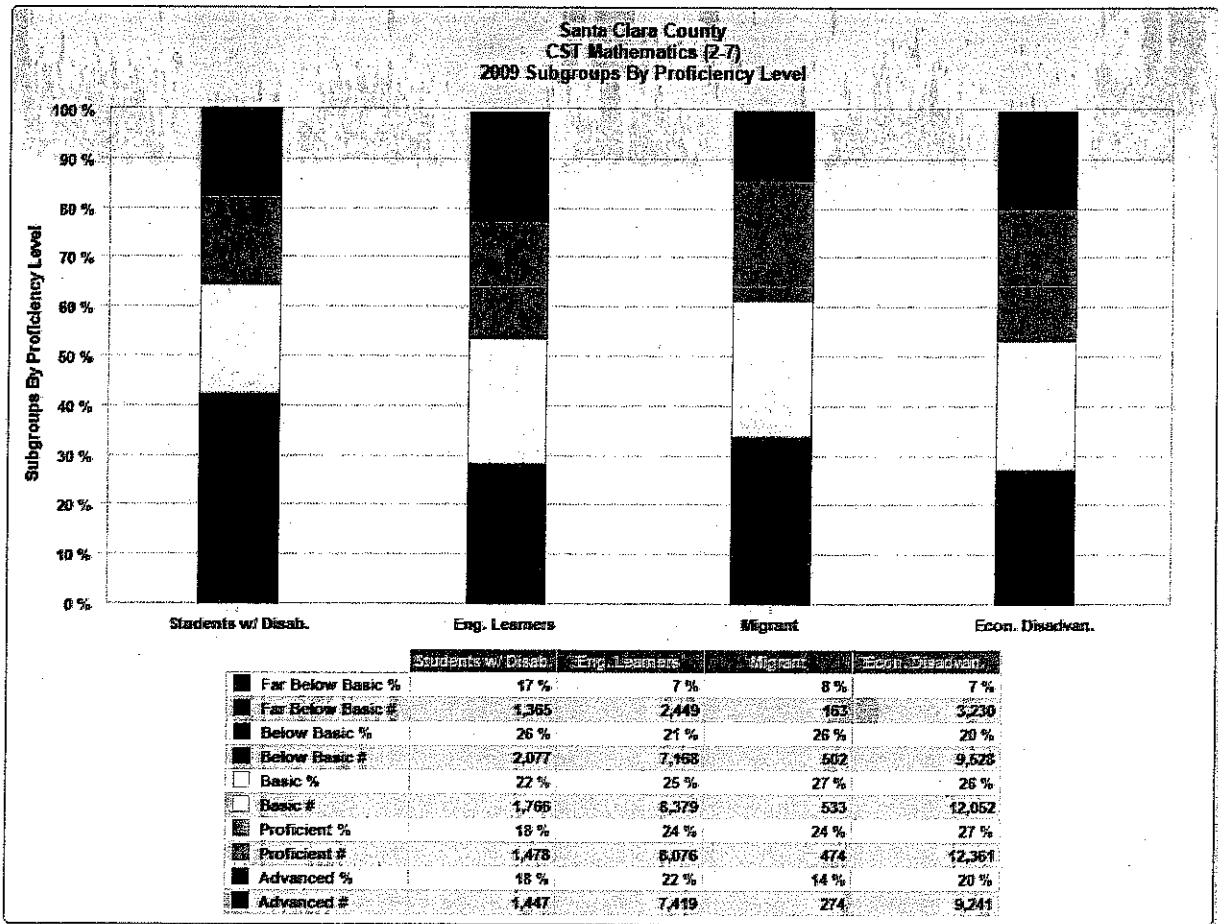
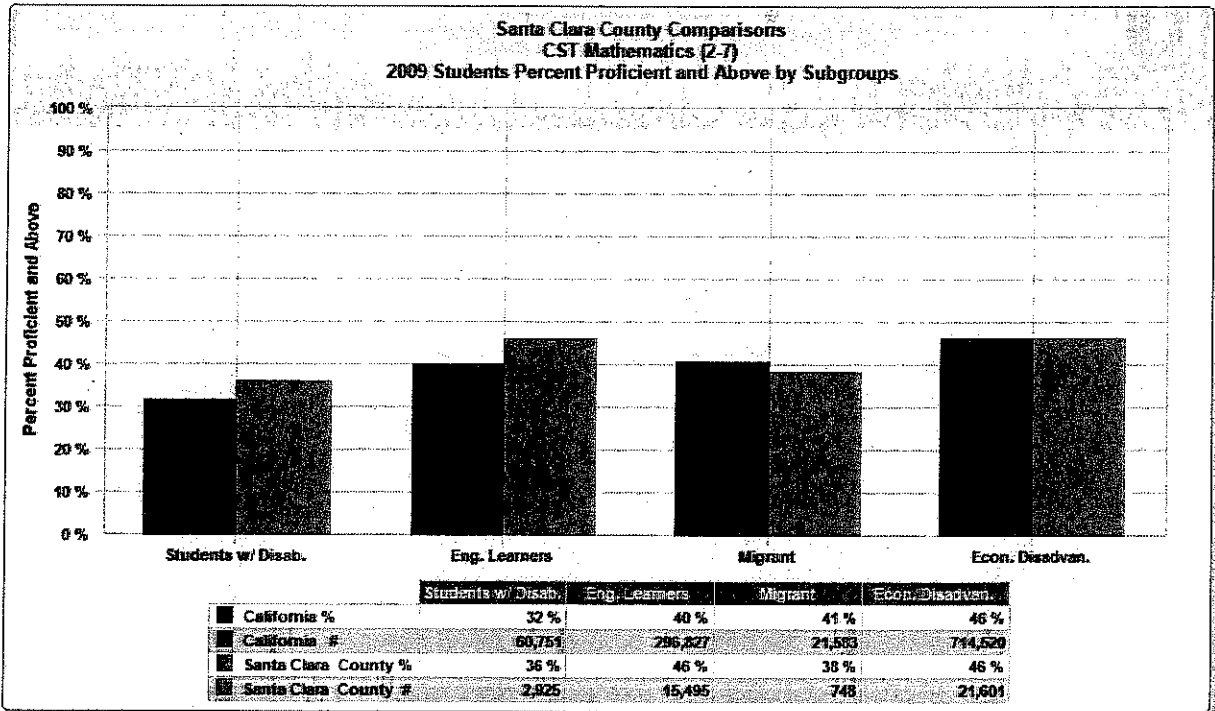
To protect student privacy, results of 10 or fewer students are not reported.

Save as pdf



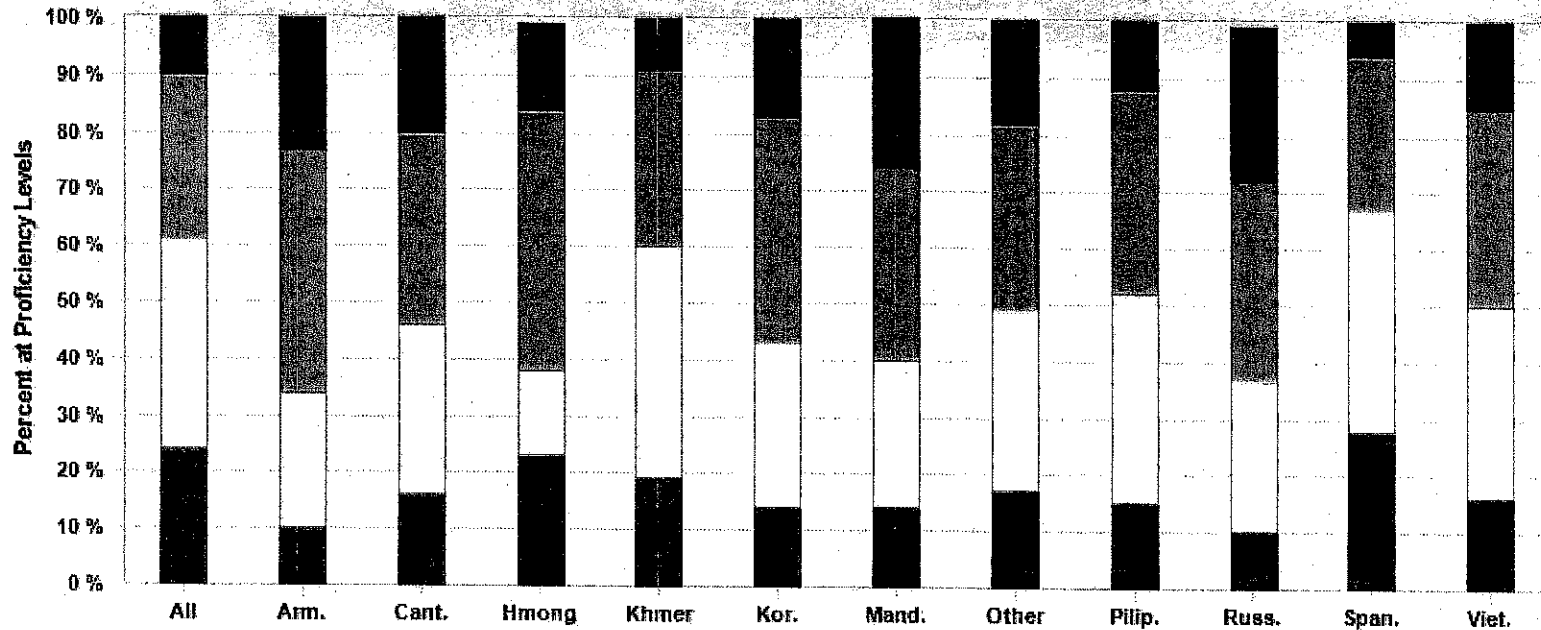
To protect student privacy, results of 10 or fewer students are not reported.

Save as pdf



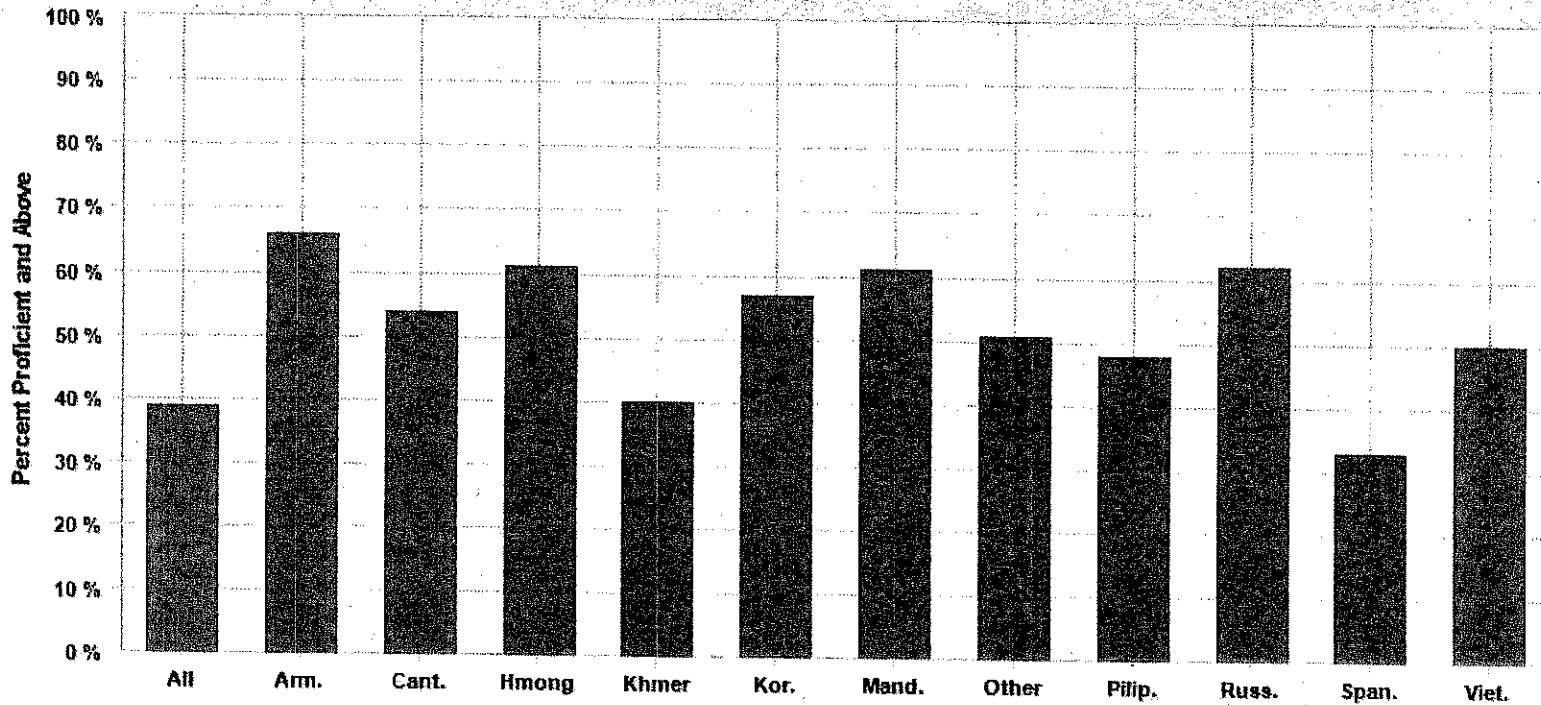
To protect student privacy, results of 10 or fewer students are not reported.

**Santa Clara County
 CELDT – Annual Assessment by Primary Language
 2008 Percent of Students at Each Overall Proficiency Level**



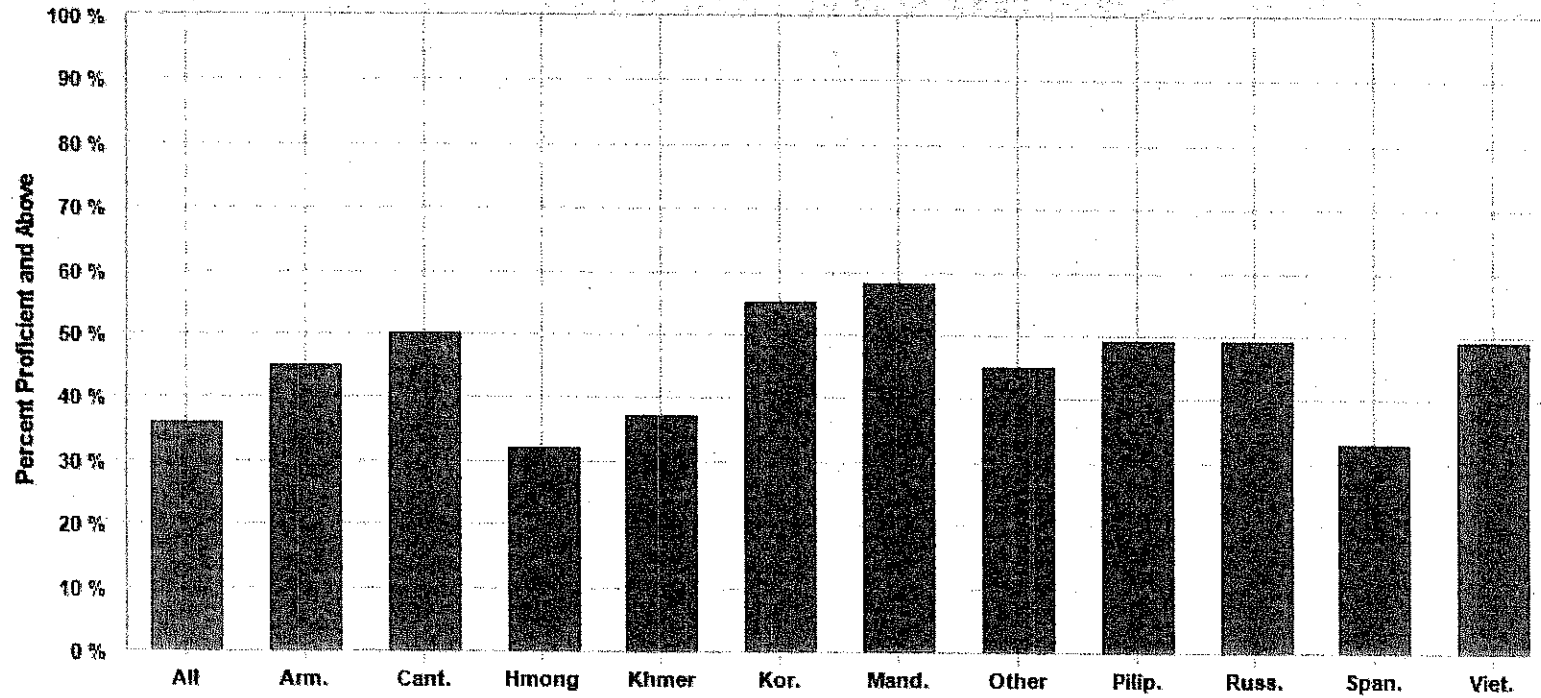
	All	Am.	Cant.	Hmong	Khmer	Kor.	Mand.	Other	Pilip.	Russ.	Span.	Viet.
■ Beginning %	8 %	4 %	5 %		6 %	4 %	5 %	6 %	4 %	4 %	10 %	5 %
■ Beginning #	4,642	6	50		22	26	74	337	78	11	3,712	326
■ Early Intermediate %	16 %	6 %	11 %	23 %	13 %	10 %	9 %	11 %	11 %	6 %	18 %	11 %
■ Early Intermediate #	6,621	7	103	3	49	71	125	580	192	17	6,729	741
□ Intermediate %	37 %	24 %	30 %	15 %	41 %	29 %	26 %	32 %	37 %	27 %	39 %	34 %
□ Intermediate #	20,067	29	285	2	153	203	377	1,651	673	76	14,401	2,207
■ Early Advanced %	29 %	43 %	34 %	46 %	31 %	40 %	34 %	33 %	36 %	35 %	27 %	35 %
■ Early Advanced #	15,988	51	326	6	118	287	500	1,708	644	97	9,952	2,291
■ Advanced %	10 %	23 %	20 %	15 %	9 %	17 %	27 %	18 %	12 %	27 %	6 %	15 %
■ Advanced #	5,387	28	186	2	33	122	393	938	221	76	2,378	1,008

**Santa Clara County
California English Language Development Test (CELDT)
2008 Percent Proficient and Above**



	All	Arm.	Cant.	Hmong	Khmer	Kor.	Mand.	Other	Pilip.	Russ.	Span.	Viet.
2008 %	39 %	66 %	54 %	61 %	40 %	57 %	61 %	51 %	48 %	62 %	33 %	50 %
2008 #	21,375	79	512	8	151	409	893	2,646	866	173	12,330	3,299

**California State
California English Language Development Test (CELDT)
2008 Percent Proficient and Above**



	All	Arm.	Cant.	Hmong	Khmer	Kor.	Mand.	Other	Pilip.	Russ.	Span.	Viet.
2008 %	36 %	45 %	50 %	32 %	37 %	55 %	58 %	45 %	49 %	49 %	33 %	49 %
2008 #	476,785	3,067	9,221	5,884	2,435	7,483	5,720	29,705	8,828	2,909	386,129	14,664